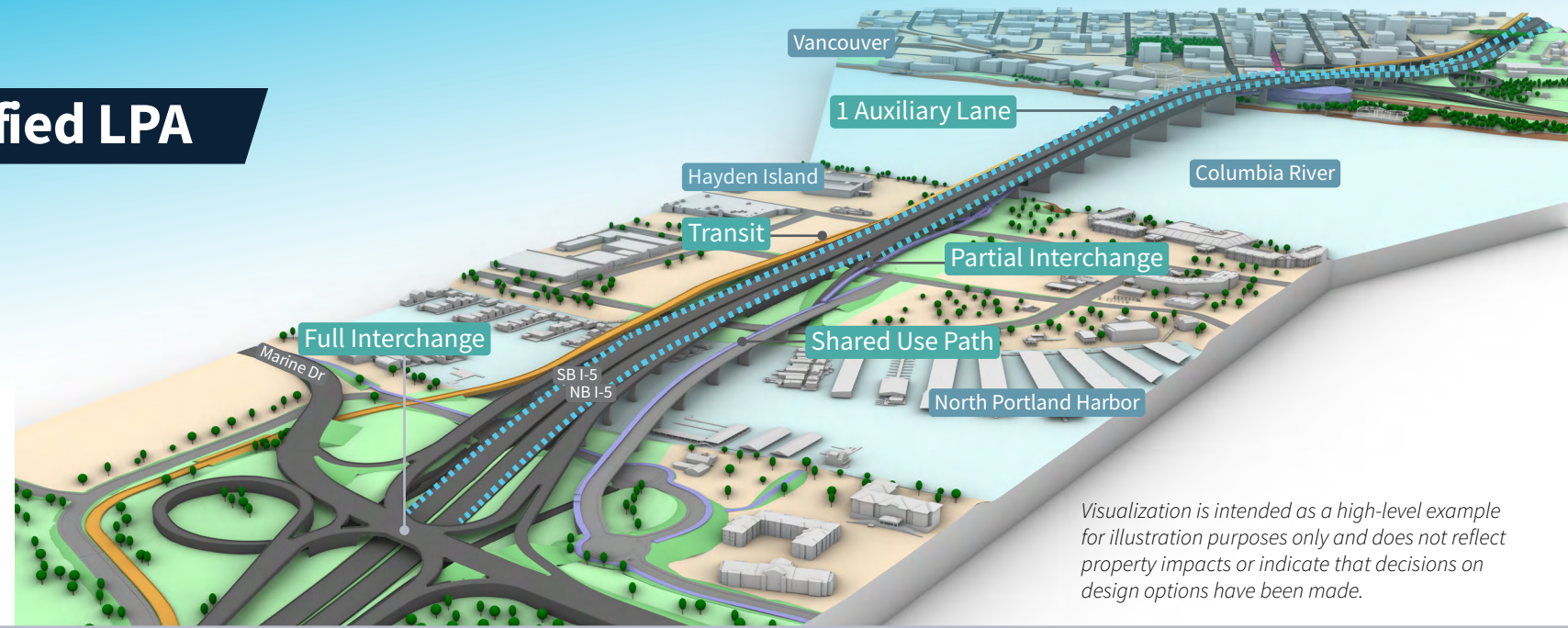


IBR Recommendation: Modified LPA

Hayden Island:
Partial Interchange
 Transit:
Light Rail to Evergreen near I-5


River Crossing
 Auxiliary Lanes:
1
 Variable Rate
 Tolling:
Yes




Visualization is intended as a high-level example for illustration purposes only and does not reflect property impacts or indicate that decisions on design options have been made.

Partial Interchange Summary


Hayden Island Drive local-only trips and Tomahawk Island Drive extension increase Hayden Island east-west connectivity



Smaller interchange leaves space for a comfortable pedestrian environment and opportunities for open space



Addresses safety and congestion by improving active transportation, adding shoulders, increasing lane widths and improving ramp merges



Benefits of Expanding LRT from Expo to Evergreen

4 Stations* 

3,000+ Residents are within a half mile walk

26% BIPOC  **41%** Low-income

*Includes the existing Expo station and 3 new stations.

Equity - Jobs Accessible via Transit (% increase)*

68% General **73%** BIPOC

59% Low-income **71%** People w/ disabilities

*Increase in jobs accessible from the program area within a 45 minute midday transit ride. Percent increase determined by adding LRT Expo to Evergreen compared to 2045 No Build.

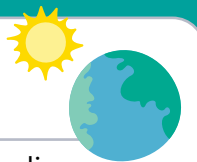
Climate - GHG Reduction*

36,000 metric tons/year
 or the equivalent of

7,000 homes' electricity for one year **OR** **89,400,000** miles driven by gas powered car

*GHG reduction is an estimate calculated from the displacement (or avoidance) in the shift from cars to transit.

Strategies to Combat Climate Change



- Demand Management, including Variable Rate Tolling (tolling will consider price reductions for low-income users and low-carbon vehicles)
- Increase traffic operation efficiencies (ramp metering and auxiliary lanes)
- Mode shift from cars to active transportation and transit
- Low-carbon emission construction strategies