



Community Advisory Group Meeting

November 10, 2022



Closed Captions in English and Spanish

English closed captions are available within Zoom and YouTube.

Users can follow this link to view both English and Spanish captions in a separate browser window:

<https://ibr.news/captions>

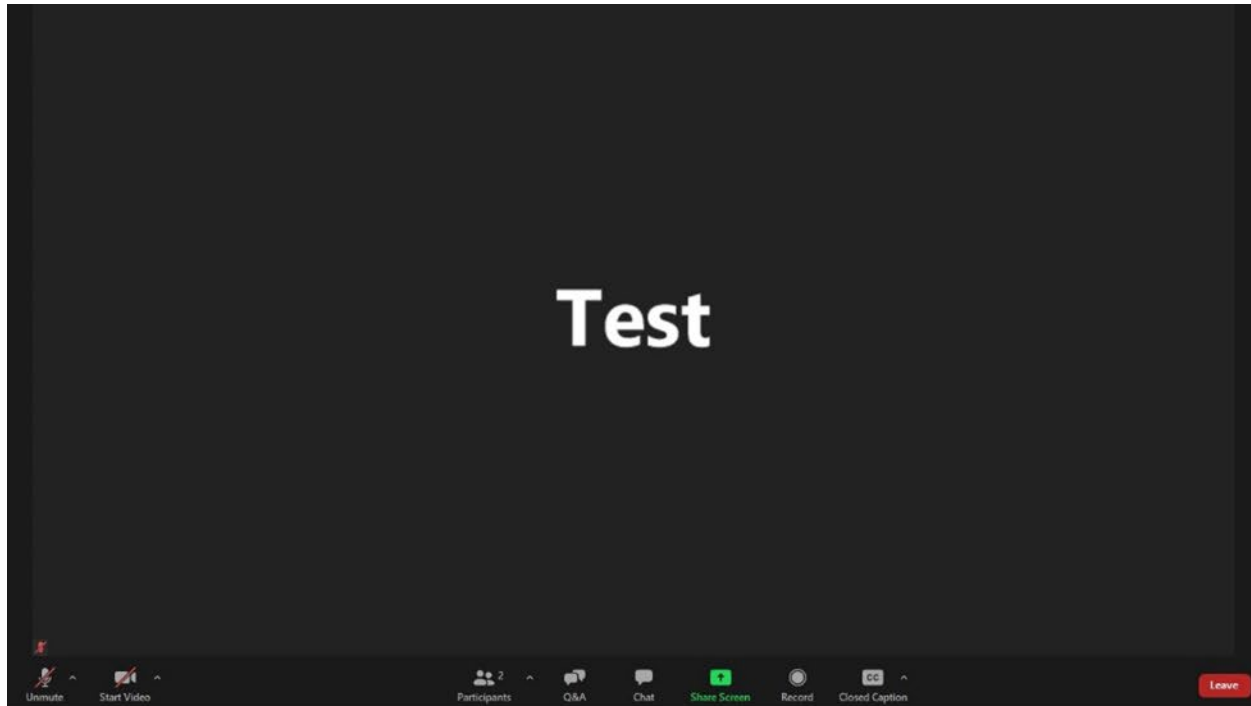
Subtítulos disponible en Inglés y Español

Los subtítulos en Inglés están disponibles en Zoom y YouTube.

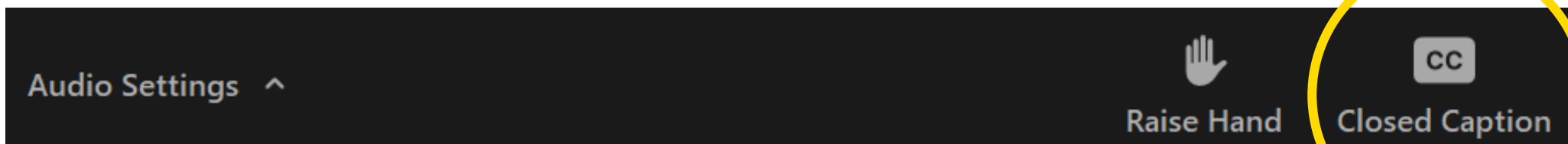
Usuarios pueden seguir este enlace para ver los subtítulos en Inglés y Español en una ventana separada del navegador:

<https://ibr.news/captions>

How to access closed captions



1. At the bottom middle of your screen you should see a menu of options. If you can't see the menu, hover your mouse over the bottom middle of the screen.
2. Then click on the “CC” icon and a separate window with captions will appear.



ASL Interpretation

- ▶ In the effort to continue to center equity there is an ASL interpreter in addition to closed captioning.
- ▶ To make sure the interpreter is always visible please right click their video and select spotlight video.
- ▶ For those watching on YouTube, when we screenshare, you will be able to see the slideshow, closed captioning and the ASL interpreter. You will still be able to hear different people speaking but may not see them.

Webinar Participation Tips

- ▶ Thank you for joining us today!
- ▶ Please join audio by either phone or computer, not both. We encourage panelists to turn on your video.
- ▶ Please keep your audio on mute when not speaking.
- ▶ If you experience technical difficulties, please contact program staff at:
(360) 329-6744

Public Input Instructions

- ▶ **There will be an opportunity to provide brief public input later in the meeting today (around 5:45PM).**
- ▶ **Verbal public comment will be welcome in the Zoom Webinar during the designated time, with the option to turn on your web camera.**
 - Please use the link located in the meeting description on the YouTube meeting page or on the IBR CAG meeting webpage.
 - Commenters will not be allowed to share their screens and will be removed from the room once the public comment period concludes.
- ▶ **To comment by phone:**
 - Dial: +1 669 900 6833 or +1 408 638 0968
 - Enter meeting ID: 993 5459 6043, passcode: 674942
 - Dial *9 to raise your hand
 - After you are invited to speak, dial *6 to unmute yourself



Public Input Instructions

► To submit comment after the meeting:

- Fill out the comment form on the program website or email your comments to **info@interstatebridge.org** with “CAG Public Comment” in the subject line.
- Call **360-859-0494** (Washington), **503-897-9218** (Oregon), or **888-503-6735** (toll-free) and state "CAG Public Comment" in your message.
- Written comments need to explicitly say “**CAG Public Comment**” in the subject line or in the body of the message for them to be identified and distributed to CAG members.
- All written comments must be received prior to 48 hours in advance of each upcoming meeting in order to be distributed to advisory group members. Comments received after that point will be distributed to members in advance of their next meeting.



CAG Member Commitments & Operating Norms

- ▶ Put Relationships First
- ▶ Keep Focused on Our Common Goal
- ▶ Notice Power Dynamics in the Room
- ▶ Create a Space for Multiple Truths & Norms
- ▶ Be Kind and Brave
- ▶ Practice Examining Racially Biased Systems and Processes
- ▶ Look for Learning

Meeting Agenda

1. Welcome
2. Program update
3. Overview of Partner Conditions on the Modified LPA
4. Modified LPA and program area improvements
5. Community Benefit Agreement
6. What's next, public comment, wrap up

Program Update

Greg Johnson, Program Administrator

Program Updates

- ▶ **Bridge Investment Program planning grant award**
- ▶ **Bi-State Legislative Committee meeting update**
- ▶ **Upcoming Equity Roundtable event**
 - Accessibility Throughout Infrastructure Projects: December 1, 2022
- ▶ **IBR team progress on technical reports and analysis**



Overview of Partner Conditions on the Modified LPA

Katy Belokonny & Grace Crunican, IBR Public Affairs Team

Partner Conditions

- ▶ **The Modified Locally Preferred Alternative was endorsed by all eight local partner agencies this summer**
 - As part of the endorsement process, the program received 175 conditions reflecting partner priorities and requests for additional work in the following topical categories:
 - *Auxiliary Lanes/Shoulders*
 - *Community and Partner Engagement*
 - *Design*
 - *Equity*
 - *Finance*
 - *Climate Measurements*
 - *NEPA Process*
 - *Traffic*
 - *Transit*
 - *Tolling*

Next Steps for Partner Conditions

- ▶ **Majority of conditions received are built into program elements and analysis**
 - Conversations have been ongoing with partner agencies to better understand their requests
- ▶ **Remainder of conditions are receiving more consideration to identify how they will be addressed**
 - Auxiliary Lanes, Transit Issues, GHG/VMT analysis, tolling, extent of active transportation improvements



Questions or Feedback?

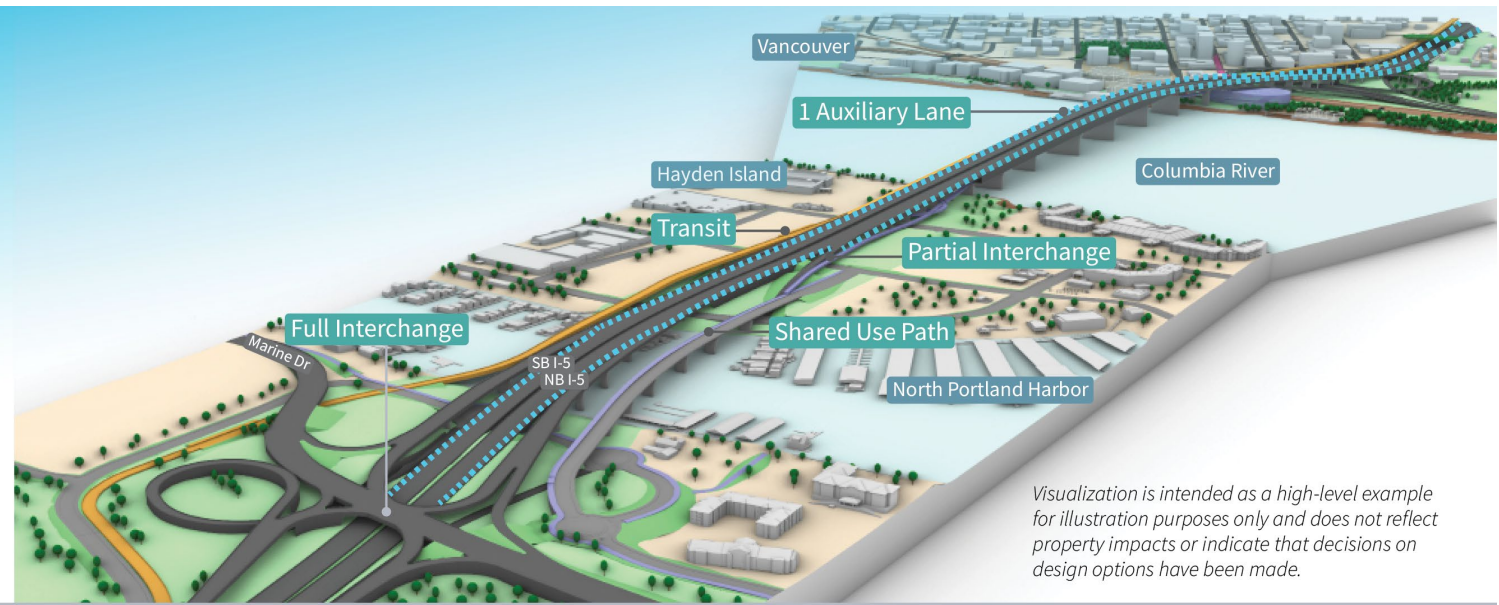
Modified LPA and Program Area Improvements

Brad Phillips and Casey Liles, IBR Design Team

IBR: Modified LPA

Hayden Island: River Crossing
Partial Interchange

Transit: Variable Rate
Light Rail to Evergreen near I-5 **Yes**

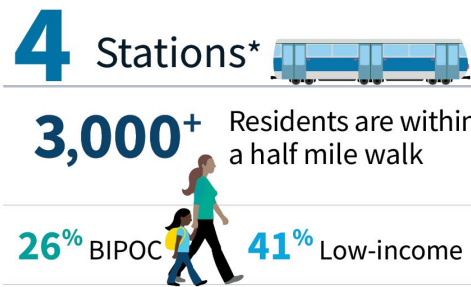


Visualization is intended as a high-level example for illustration purposes only and does not reflect property impacts or indicate that decisions on design options have been made.

Partial Interchange Summary

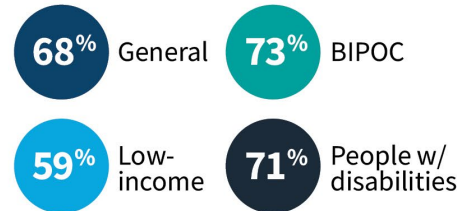
 <p>Hayden Island Drive local-only trips and Tomahawk Island Drive extension increase Hayden Island east-west connectivity</p>	 <p>Smaller interchange leaves space for a comfortable pedestrian environment and opportunities for open space</p>	 <p>Addresses safety and congestion by improving active transportation, adding shoulders, increasing lane widths and improving ramp merges</p>
---	---	---

Benefits of Expanding LRT from Expo to Evergreen



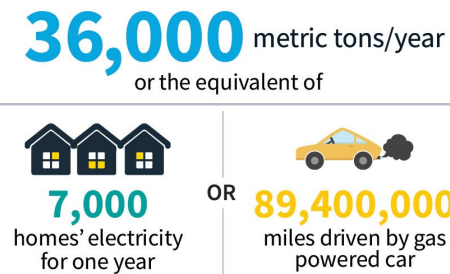
*Includes the existing Expo station and 3 new stations.

Equity - Jobs Accessible via Transit (% increase)*



*Increase in jobs accessible from the program area within a 45 minute midday transit ride. Percent increase determined by adding LRT Expo to Evergreen compared to 2045 No Build.

Climate - GHG Reduction*



*GHG reduction is an estimate calculated from the displacement (or avoidance) in the shift from cars to transit.

Strategies to Combat Climate Change

- Demand Management, including Variable Rate Tolling (*tolling will consider price reductions for low-income users and low-carbon vehicles*)
- Increase traffic operation efficiencies (*ramp metering and auxiliary lanes*)
- Mode shift from cars to active transportation and transit
- Low-carbon emission construction strategies

Next Phase: Environmental Analysis & Review

- ▶ **NEPA:** National Environmental Policy Act of 1970
- ▶ Supplemental Draft Environmental Impact Statement (SDEIS): **Published Summer 2023**
- ▶ Combined Supplemental **Final** EIS and Amended Record of Decision (ROD): **Summer 2024**

IBR Modified LPA Improvements in SDEIS

- ▶ Conceptual design
- ▶ Modified LPA components
- ▶ Local street connections and on/off ramps locations for seven interchanges
- ▶ Possible locations for a park and ride at the Vancouver Waterfront and Evergreen
- ▶ Station locations at Hayden Island, Vancouver Waterfront and Evergreen
- ▶ Active transportation pathways

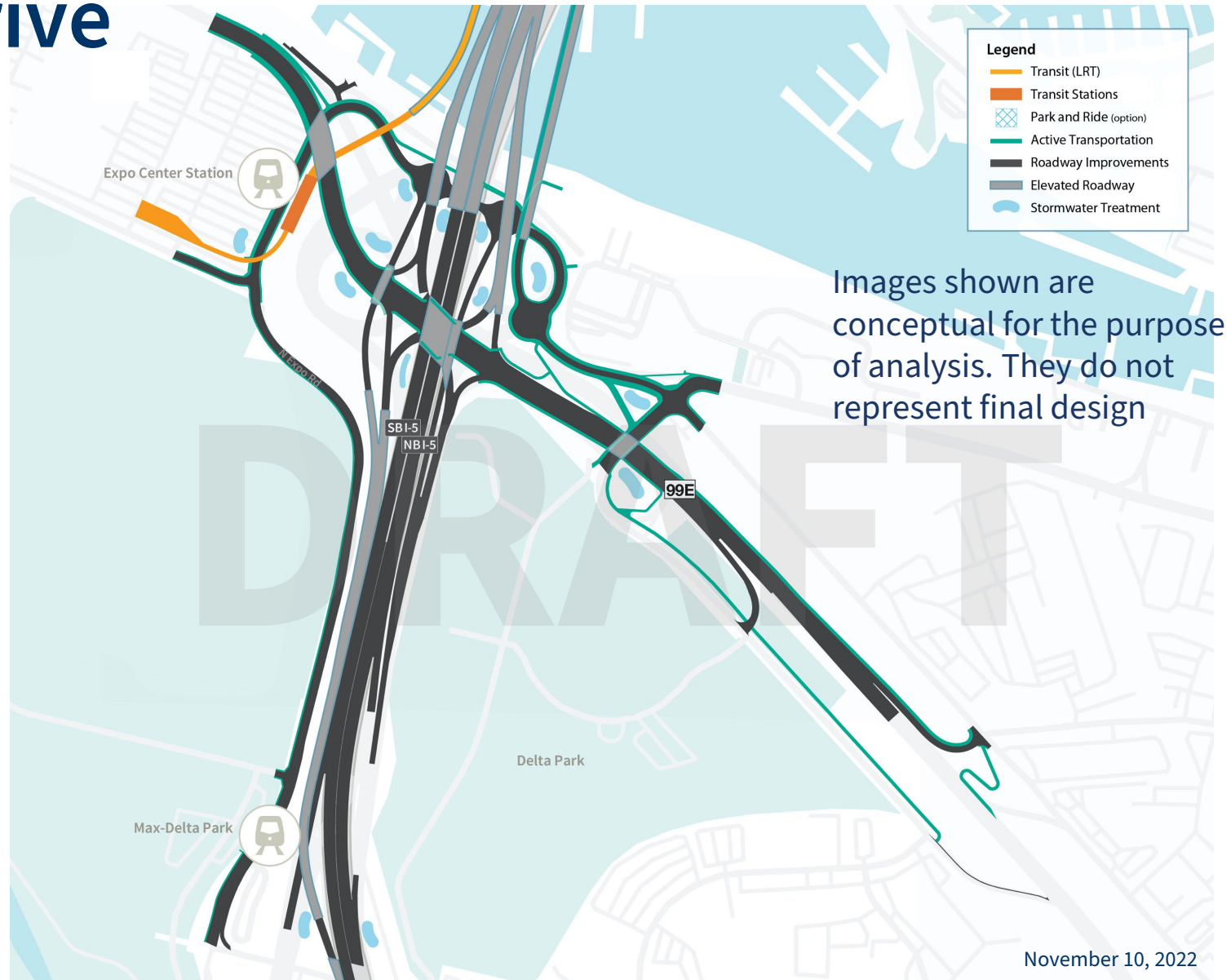


Images shown are conceptual for the purpose of analysis. They do not represent final design

November 10, 2022

Design Considerations for Environmental Review: Marine Drive

- ▶ Marine Drive interchange configuration
- ▶ Shared use path connections between Hayden Island and North Portland
- ▶ Active transportation improvements in North Portland
- ▶ Local street connections and improvements



Improvements for Study in SDEIS

► River Crossing

- West of existing bridge
- 1 Aux lane in each direction
- Active transportation pathway on northbound bridge
- Light rail on southbound bridge

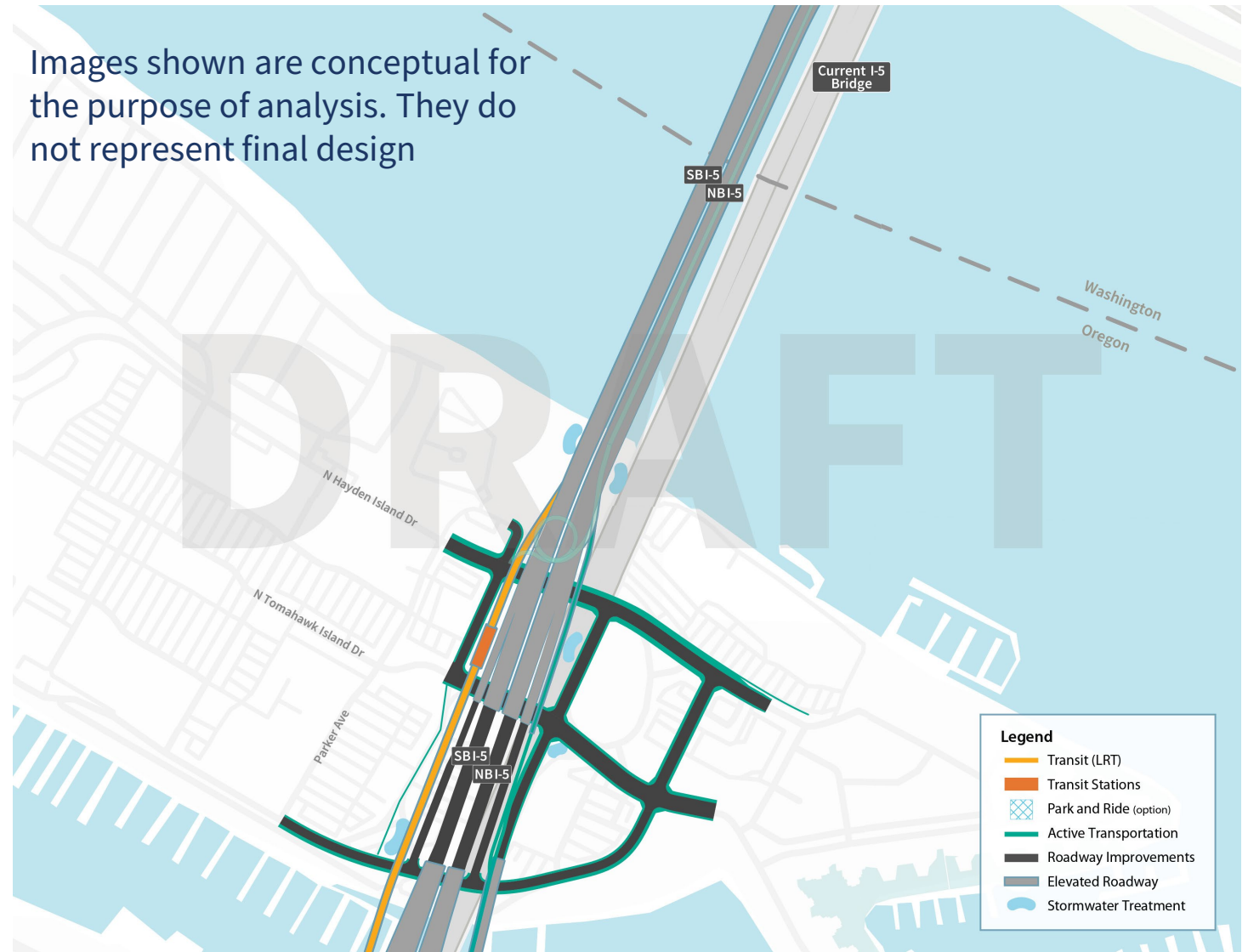
► Hayden Island Interchange

- Partial interchange configuration
- Active transportation improvements
- Light rail station

► Arterial bridge

- East of I-5
- Local connection between Hayden Island and North Portland

Images shown are conceptual for the purpose of analysis. They do not represent final design



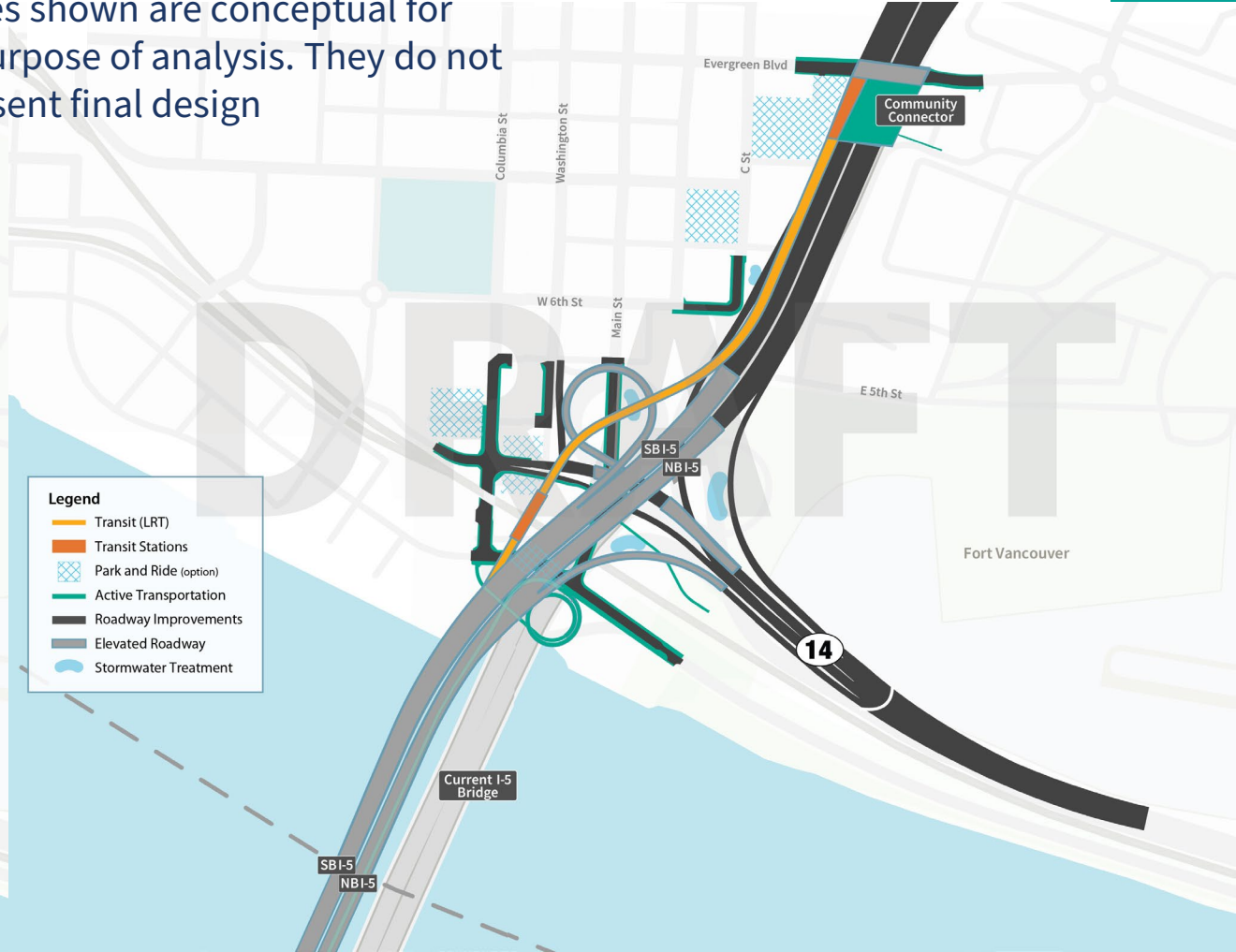
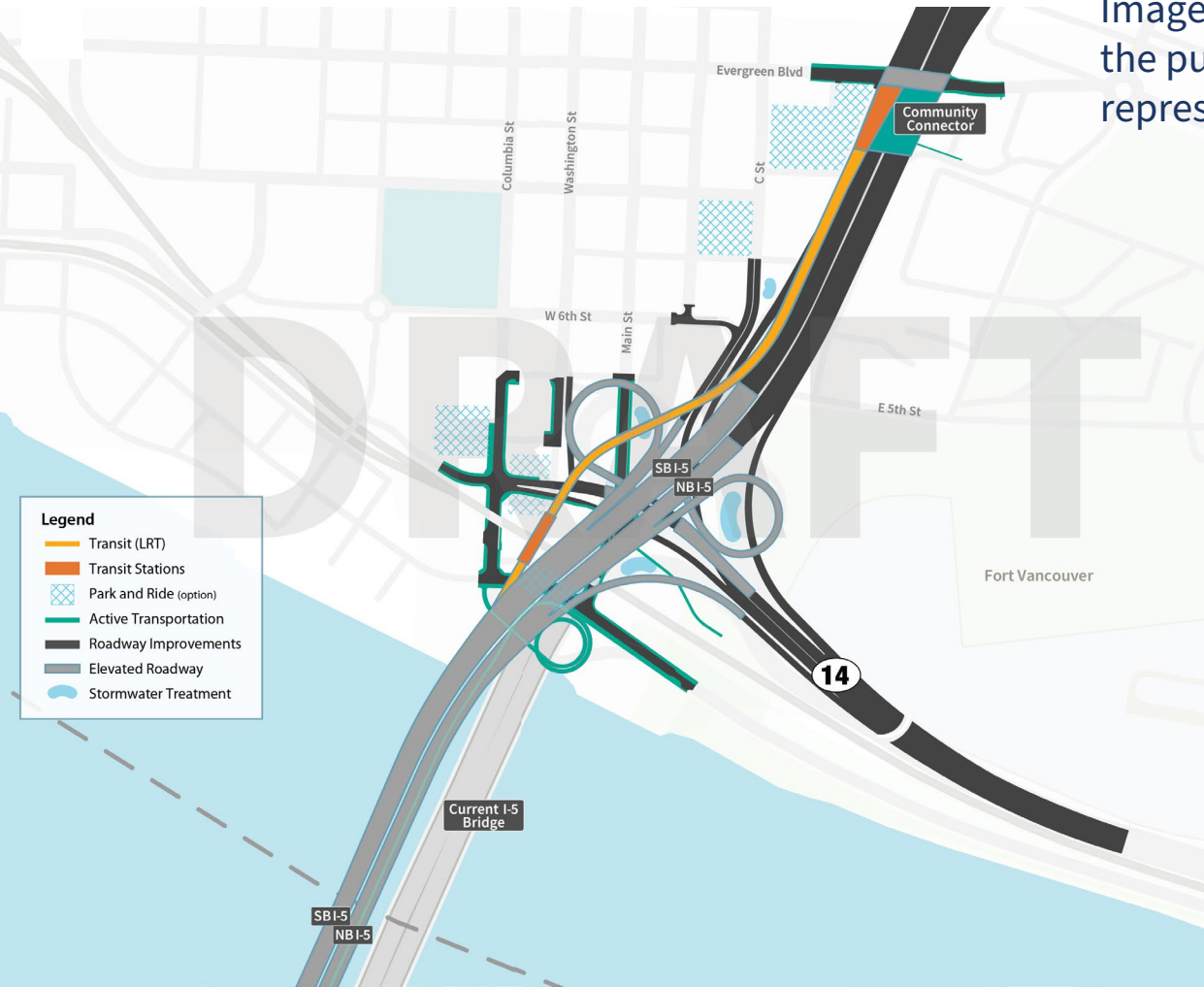
Legend	
	Transit (LRT)
	Transit Stations
	Park and Ride (option)
	Active Transportation
	Roadway Improvements
	Elevated Roadway
	Stormwater Treatment

Improvements for Study in SDEIS : Downtown Vancouver

- ▶ Two variations of roadway alignment
 - A range of alignment options is being studied to better understand the range of impacts in the constrained area of downtown Vancouver
- ▶ Transit: (LRT)
 - I-5 alignment
 - Terminus near Evergreen Blvd.
- ▶ Potential transit park and ride locations
 - Park and Ride locations are being studied in order to understand the impacts and benefits. A decision to include Park and Rides in Vancouver has not been decided and will include input from program partners and the community
- ▶ Proposed community connector
- ▶ Active transportation connections and improvements
- ▶ Connections to SR 14 and Downtown Vancouver

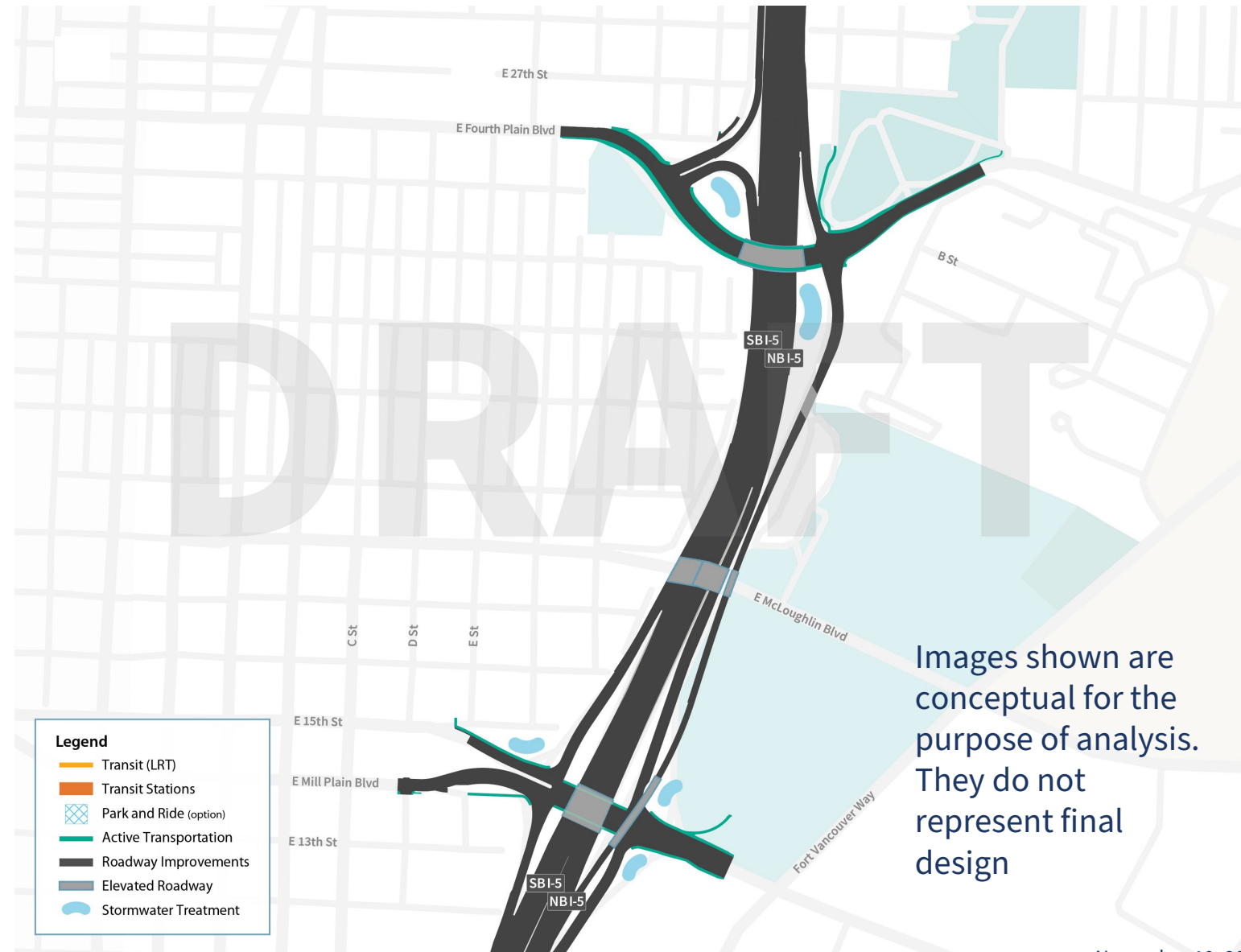
Improvements for Study in SDEIS : Downtown Vancouver

Images shown are conceptual for the purpose of analysis. They do not represent final design



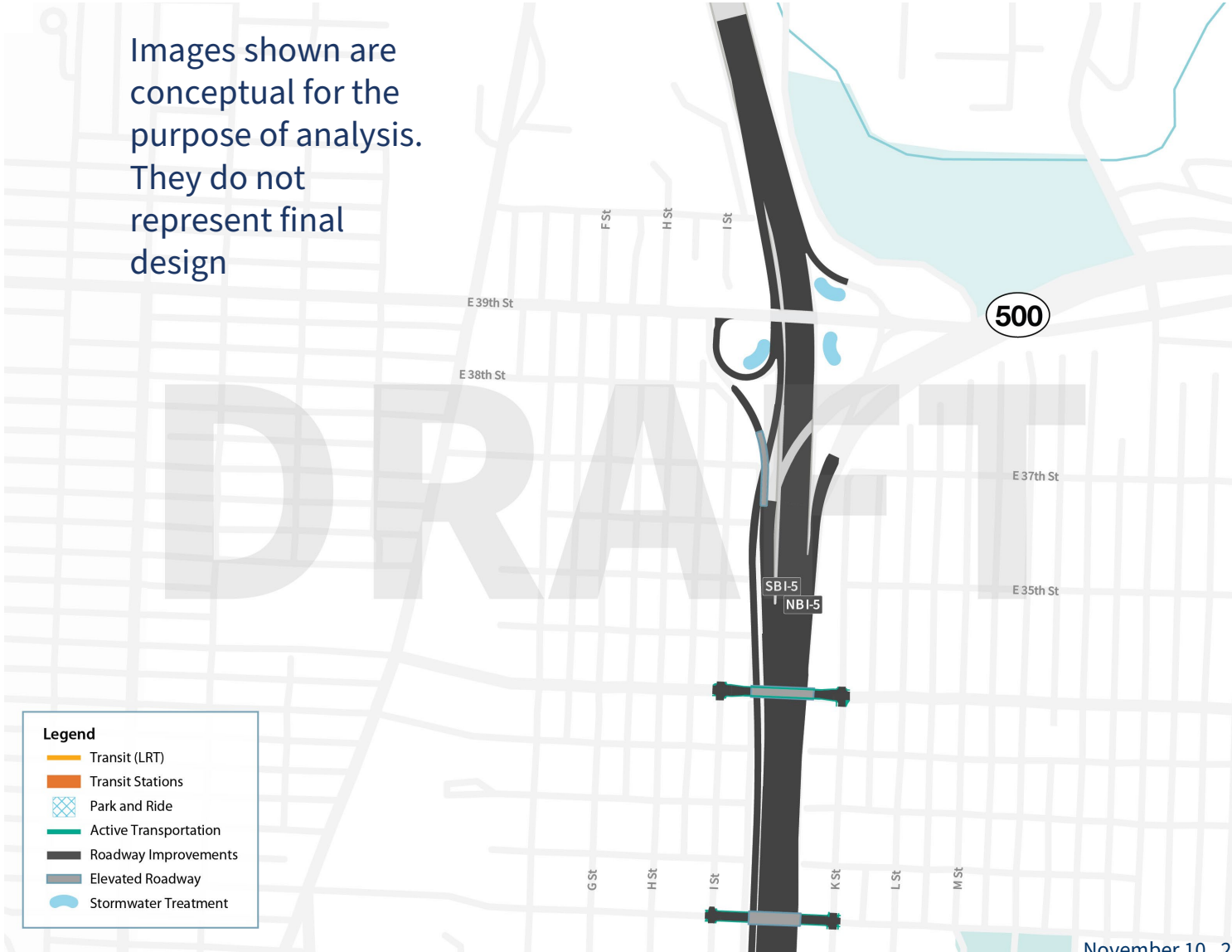
Improvements for study in SDEIS : Fourth Plain & Mill Plain

- ▶ Interchange improvements to Mill Plain and Fourth Plain
- ▶ Interchange to Interchange connections
- ▶ Active Transportation improvements



Improvements for study in SDEIS : North Vancouver program area

- ▶ Interchange to Interchange connections
- ▶ Active Transportation improvements



Next Steps: SDEIS Analysis

- ▶ **SDEIS will evaluate two alternatives**
 - Updated No Build Alternative
 - Modified LPA
- ▶ **Design is conceptual**
 - General alignments and locations of transportation facilities
- ▶ **Impacts and benefits**
 - Mix of quantitative and qualitative analysis
- ▶ **Mitigation**
 - Proposed measures to address unavoidable adverse impacts
- ▶ **Public Comment Period on SDEIS**
 - Summer 2023

Ch 1

Purpose and Need

Ch 2

Description of Alternatives

Ch 3

Existing Conditions and Environmental Consequences

Ch 4

Financial Analysis

Ch 5

Revised Draft Section 4(f) Evaluation

Ch 6

Public Involvement and Tribal Consultation

Supplemental Final EIS and Amended ROD

- ▶ **The Supplemental Final EIS includes the following:**
 - Consider all Supplemental DEIS public comments
 - Refine the Modified LPA in response to public comments and other design considerations
 - Update, correct, and augment the environmental impact and benefit analysis
 - Include additional regulatory compliance activities and findings
 - Commit to specific mitigation
- ▶ **Amended Record of Decision:**
 - Issued by the lead federal agencies
 - Documents the alternative selected for further design and permit applications
- ▶ **A Combined Supplemental Final EIS and Amended Record of Decision is planned – Summer 2024**



Questions or Feedback?



IBR Community Benefit Agreement Development

Jake Warr, Equity Lead

What is a Community Benefit Agreement?

- ▶ An agreement (or set of agreements) that establishes a range of benefits for the local community as part of a development project
- ▶ Becoming a best practice for large-scale development projects
- ▶ Private vs. Public CBAs

What is a Community Benefit Agreement? – cont.’d

► Common Components

- Local street improvements
- Living wage programs
- Targeted hiring programs
- Job training programs
- Construction mitigations
- Support for affordable housing development
- Local community/neighborhood improvements (youth centers, recreation facilities, parks, etc.)



Local workforce and training strategies



Construction and operations effect on the community



Aesthetics and landscaping



Regional economic and community development opportunities

Equity Framework & the Community Benefit Agreement

- ▶ **Principles from the Equity Framework that will directly inform the CBA:**
 - Acknowledge, honor, and apply lessons learned from history and local current applications
 - Identify and address disparities
 - When legally permissible, use existing laws and regulations as the floor, rather than the ceiling
 - Prioritize contract equity and economic justice

Equity Framework & the CBA – cont.’d

► CBA elements will be tied back to the equity objectives:

Mobility and accessibility: Improve mobility, accessibility, and connectivity, especially for lower income travelers, people with disabilities, and historically underserved communities who experience transportation barriers.

Physical design: Integrate equity, area history, and culture into the physical design elements of the program including bridge aesthetics, artwork, amenities, and impacts to adjacent land uses.

Community benefits: Find opportunities for and implement local community improvements in addition to required mitigations.

Workforce equity and economic opportunity: Ensure that economic opportunities generated by the program benefit minority and women owned firms, BIPOC workers, workers with disabilities, and young people.

Decision-making processes: Prioritize access, influence, and decision-making power for Equity Priority Communities throughout the program in establishing objectives, design, implementation, and evaluation of success.

Avoid further harm: Actively seek out options with a harm-reduction priority rather than simply mitigate disproportionate impacts on historically impacted and underserved communities and populations.

Community Benefit Agreement Development

- ▶ **Considerations:**

- Funding sources
- Regulatory considerations
- Efforts currently underway with local governments and agencies
- FHWA and/or FTA approval requirements
- Workforce/labor agreements

- ▶ **Where we currently are in the process**

- ▶ **Next steps**

What's Next?

Next Program Meetings

- ▶ Equity Advisory Group
 - November 21, 5:30-7:30 p.m.
- ▶ Community Advisory Group
 - December 8, 4:00-6:00 p.m.
- ▶ Bi-State Legislative Committee
 - December 12, 9:00-12:00 p.m.
- ▶ Executive Steering Group
 - December 16, 10:00-12:00 p.m.

Future CAG Meeting Topics

- ▶ CAG survey results
- ▶ CAG 2023 – purpose, role, schedule
- ▶ IBR & CAG workplan
- ▶ Community Benefits Agreement
- ▶ IBR cost estimate and funding plan update
- ▶ Program design elements and aesthetics
- ▶ Community engagement approach and implementation

Public Comment

Comment Instructions

To make a verbal comment:

- **Verbal public comment will be welcome in the Zoom Webinar during the designated time, with the option to turn on your web camera.** Please use the link located in the meeting description on the YouTube meeting page or on the IBR CAG meeting webpage. Commenters will not be allowed to share their screens and will be removed from the room once the public comment period concludes.
- **To comment by phone:**
 - Dial: +1 669 900 6833 or +1 408 638 0968
 - Enter meeting ID: 993 5459 6043, passcode: 674942
 - Dial *9 to raise your hand
 - After you are invited to speak, dial *6 to unmute yourself
 - 10-minute timeframe will be divided among the number of requested speakers.

If we run out of time and you have not had a chance to speak, you can still provide comments after the meeting.



Comment Instructions

To submit comment after the meeting:



- ▶ Fill out the comment form on the program website or email your comments to info@interstatebridge.org with “CAG Public Comment” in the subject line.



- ▶ Call **360-859-0494** (Washington), **503-897-9218** (Oregon), **888-503-6735** (toll-free) and state "CAG Public Comment" in your message.
- ▶ Written comments need to explicitly say “**CAG Public Comment**” in the subject line or in the body of the message for them to be identified and distributed to CAG members.
- ▶ All written comments must be received prior to 48 hours in advance of each upcoming meeting in order to be distributed to advisory group members. Comments received after that point will be distributed to members in advance of their next meeting.



Wrap Up

Final Thoughts



Thank you!

