



Community Advisory Group Meeting

August 5, 2021



Closed Captions in English and Spanish

English closed captions are available within Zoom and YouTube.

Users can follow this link to view both English and Spanish captions in a separate browser window:

<https://ibr.news/captions>

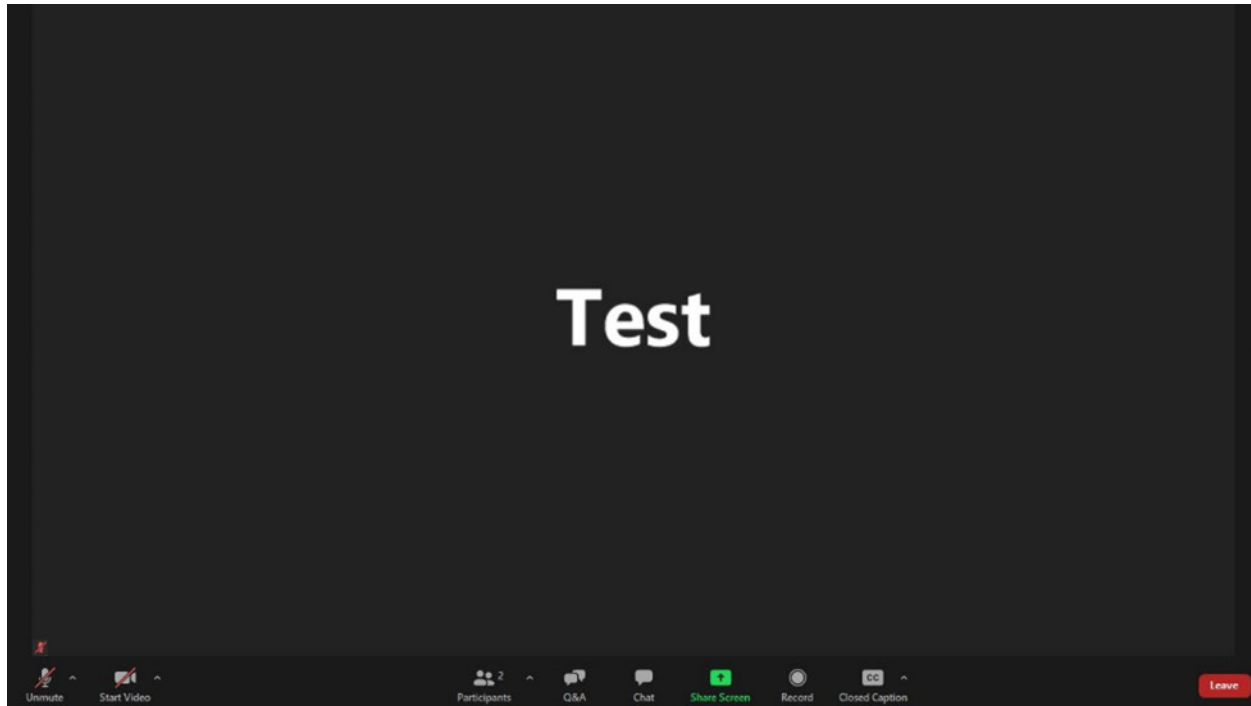
Subtítulos disponible en Inglés y Español

Los subtítulos en Inglés están disponibles en Zoom y YouTube.

Usuarios pueden seguir este enlace para ver los subtítulos en Inglés y Español en una ventana separada del navegador:

<https://ibr.news/captions>

How to access closed captions



1. At the bottom middle of your screen you should see a menu of options. If you can't see the menu, hover your mouse over the bottom middle of the screen.
2. Then click on the “CC” icon and a separate window with captions will appear.



ASL Interpretation

- ▶ In the effort to continue to center equity there is an ASL interpreter in addition to closed captioning.
- ▶ To make sure the interpreter is always visible please right click their video and select spotlight video.
- ▶ For those watching on YouTube, when we screenshare, you will be able to see the slideshow, closed captioning and the ASL interpreter. You will still be able to hear different people speaking but may not see them.

Webinar Participation Tips

- ▶ Thank you for joining us today!
- ▶ Please join audio by either phone or computer, not both. We encourage panelists to turn on your video.
- ▶ Please keep your audio on mute when not speaking.
- ▶ If you experience technical difficulties, please contact program staff at:
(503) 897-9219

Public Input Instructions

- ▶ **There will be an opportunity to provide brief public input later in the meeting today (around 5:45PM).**
 - To dial in by phone use the following directions:
 - Dial: 1-669-900-6833
 - Meeting ID: 993 5459 6043 Passcode: 674942
 - Dial *9 to raise your hand; After you are invited to speak, dial *6 to unmute yourself.



Public Input Instructions

- ▶ **To submit comment after the meeting:**
 - Fill out the comment form on the program website or email your comments to **info@interstatebridge.org** with “CAG Public Comment” in the subject line.
 - Call **360-859-0494** (Washington), **503-897-9218** (Oregon), or **888-503-6735** (toll-free) and state "CAG Public Comment" in your message.
 - Written comments need to explicitly say “**CAG Public Comment**” in the subject line or in the body of the message for them to be identified and distributed to CAG members.
 - All written comments must be received prior to 48 hours in advance of each upcoming meeting in order to be distributed to advisory group members. Comments received after that point will be distributed to members in advance of their next meeting.



Welcome and Meeting Agenda

1. Welcome, program updates, and outcomes for today
2. IBR Climate Framework presentation
3. IBR Equity Framework presentation
4. Screening criteria and performance measures
5. IBR program decisions, timeline and data
6. What's Next, Public Comment, and Wrap Up

Program Update

Greg Johnson, Program Administrator

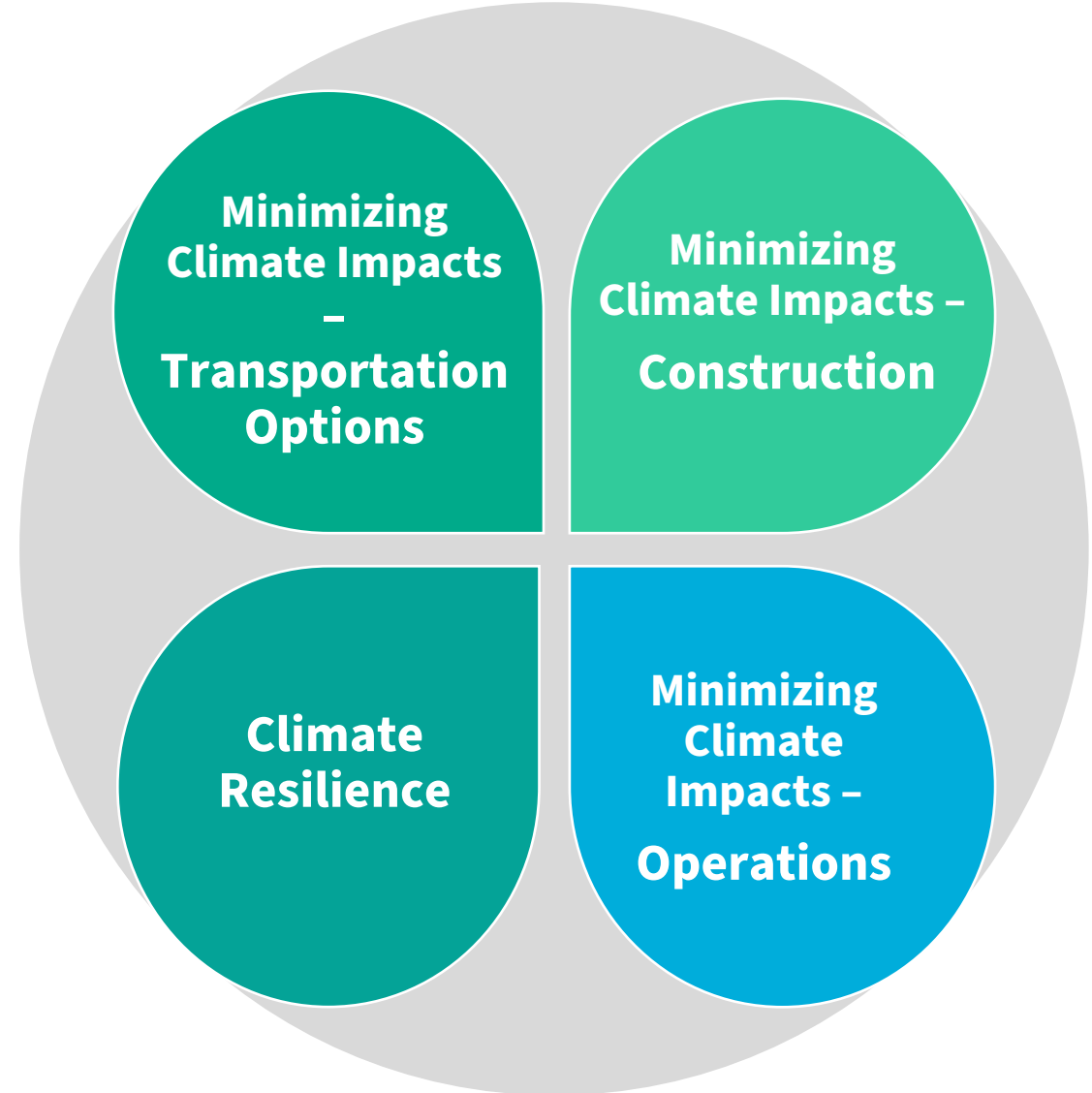


IBR Climate Framework

Sarah Ogier, Principal Climate Officer

Topics

1. Climate Context
2. IBR Climate Framework
3. Engagement Opportunities
4. Next Steps



Climate is a priority for partners and community

- Across all methods of engagement, feedback showed widespread agreement that climate was an important priority.
- Climate action is a component of formal policy and practice for Washington, Oregon, and partner agencies across the region.

Vancouver City Council to examine paths to becoming carbon neutral

Posted by Chris Brown | Date: Wednesday, November 25, 2020 | in: News

BE IT FURTHER RESOLVED, that the City of Portland adopts a new target of achieving at least a 50% reduction in carbon emissions below 1990 levels by 2030 and net-zero carbon emissions before 2050. These targets will be carried forward into future Climate Action Plan updates and work plans; and

Climate Impacts – the Current Condition



The current corridor area has:

- ▶ Limited capacity for low and no emission travel modes – walking, rolling, biking.
- ▶ Constrained transit options, connections, limited service, hours, and inefficient travel times deter users from choosing low emission transit options within the project travel path.
- ▶ Slow travel times and congestion – idling vehicles contribute to increasing GHG emissions.



Climate and Equity Nexus

- ▶ Given our equity focus, climate considerations will also be evaluated for disproportionate impacts to communities of concern.
- ▶ Climate driven design and construction elements will be evaluated for inclusivity of DBE firms to ensure the project can create robust opportunities for DBE firms.



IBR Climate Considerations

Two categories of climate considerations:

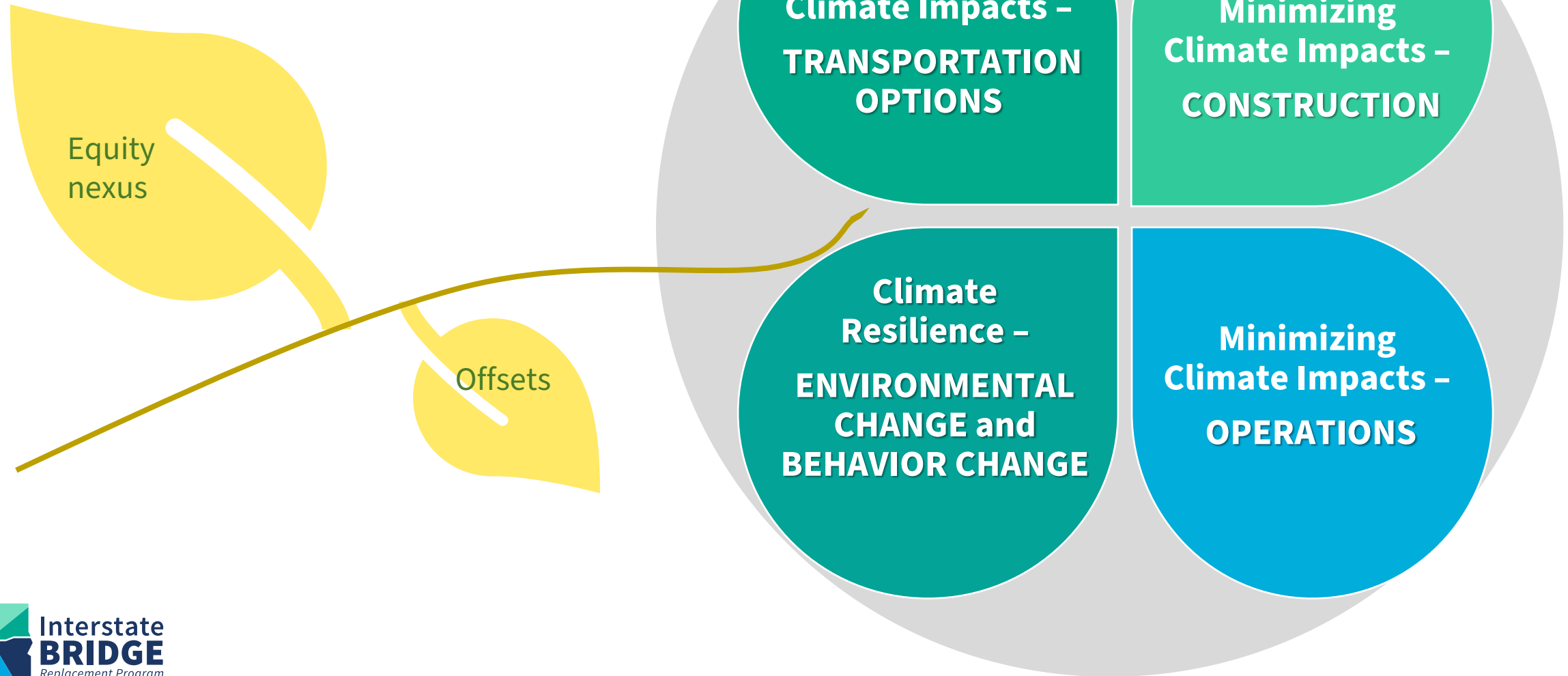
- I. **Minimizing Climate Impacts**
- II. **Addressing Climate Resiliency**

Apply these considerations for:

- ✓ Transportation Options
- ✓ Construction
- ✓ Operations



IBR Climate Framework



Minimizing Climate Impacts – 1) Transportation Options

Minimize IBR traffic vehicle-based emissions

– Minimize travel demand

- *With infrastructure that supports communities with high access to opportunity (walkable communities, complete communities)*
- *Pricing strategies*
- *Travel demand management tools*

– Shift travel demand to low GHG modes

- *Increase access and connections to high-capacity transit*
- *Increase and improve accessibility for bicycle routes*
- *Increase and improve accessibility for people who walk, bike, roll*
- *Design infrastructure to accommodate high efficiency vehicles – charging opportunities, size and speed considerations*

– Improve transportation efficiency

- *Reduce congestion*
- *Design for traffic smoothing*
- *Target moderate speeds for lower emissions*
- *Transportation system management, Intelligent Transportation System (ITS)*



Minimizing Climate Impacts –

2) Construction

Reduce IBR construction-based emissions

- Low E construction methods and materials
- Low E construction equipment and vehicles
- Local manufacturers, source material locally and reduce transport
- Zero waste goals for demolition



Minimizing Climate Impacts –

3) Maintenance and Operations

Minimize emissions associated with ongoing IBR maintenance and operations

- Lifecycle cost analysis for materials and design selection
- Prioritize materials durability
- Renewable power supply
- High efficiency lighting
- Electric vehicle maintenance fleet



Minimizing Climate Impacts –

4) Offsets

Offset unavoidable emissions

- Consider carbon offsets for construction
- Consider carbon offsets for ongoing operations
- Create a robust landscape plan that relies on much higher than traditional tree and planting replacement rates in the public right of way



Climate Resiliency-

1) Environmental Changes

Consider changes in environmental conditions resulting from changes in our climate

- Increased storm intensities > managing stormwater
- Increased river water elevation > bridge footings, boat and barge clearance
- Increased weather extremes > road surfaces, expansion
- Plant survival > native and other resilient species



Climate Resiliency –

2) Development and Behavioral Changes

Consider climate impacts to future growth and population centers, examples include:

- Climate refugees – possible influx of residents
- Shift from areas of increased flooding
- Shift from areas of increased fire or smoke
- Changing work patterns - shift early/late, cooler hours, telecommute
- Shift of seasonal work and transport of seasonal products, agriculture especially



MAY 26 • 2021

CLIMATE CONSIDERATIONS

LOOK AT CUMULATIVE GOALS WITH OTHER REGIONAL PROJECTS

WORKING WITH LOCAL LAND USE + GROWTH GOALS

- CHALLENGES**
- CONGESTION → DELAYS → BACK UPS
 - LIMITED LOW + NO EMISSION TRANSPORTATION CHOICES
 - GREENHOUSE GAS EMISSIONS
 - EQUAL ACCESS

GREENHOUSE GAS REDUCTION

LOW EMISSION TRAVEL MODES

FEWER ONE PERSON TRIPS

SUPPORT HIGH CAPACITY TRANSIT

ELECTRIFY THE CARS LEFT ON THE ROAD

THE BRIDGE IS A VITAL TRADE ROUTE

RESPECT NATIVE LANDS

GREEN MATERIALS LOCAL LABOR + MATERIALS

CONSTRUCTION

CLEAN AIR

WE COULD BE THE GREENEST BRIDGE IN THE U.S.

OPPORTUNITIES

IMPROVED MOBILITY ACCESS + EQUITY

GREEN MATERIALS

CONNECT COMMUNITIES WITH MULTI MODAL OPTIONS

MANAGE TRANSPORTATION DEMAND

ZERO EMISSION BUSES

ITS - INTELLIGENT TRANSPORTATION SYSTEMS

GREEN OPERATIONS + MAINTENANCE APPROACH

CONNECT TO REGION'S CONGESTION MANAGEMENT PROCESS

CONSIDER FUTURE RIVER ELEVATIONS

WE NEED A WIDE VARIETY OF LOW GHG WAYS TO MOVE FREIGHT

GOAL: GET OFF OF FOSSIL FUELS

ELECTRIFICATION IS NOT THE ONLY ANSWER

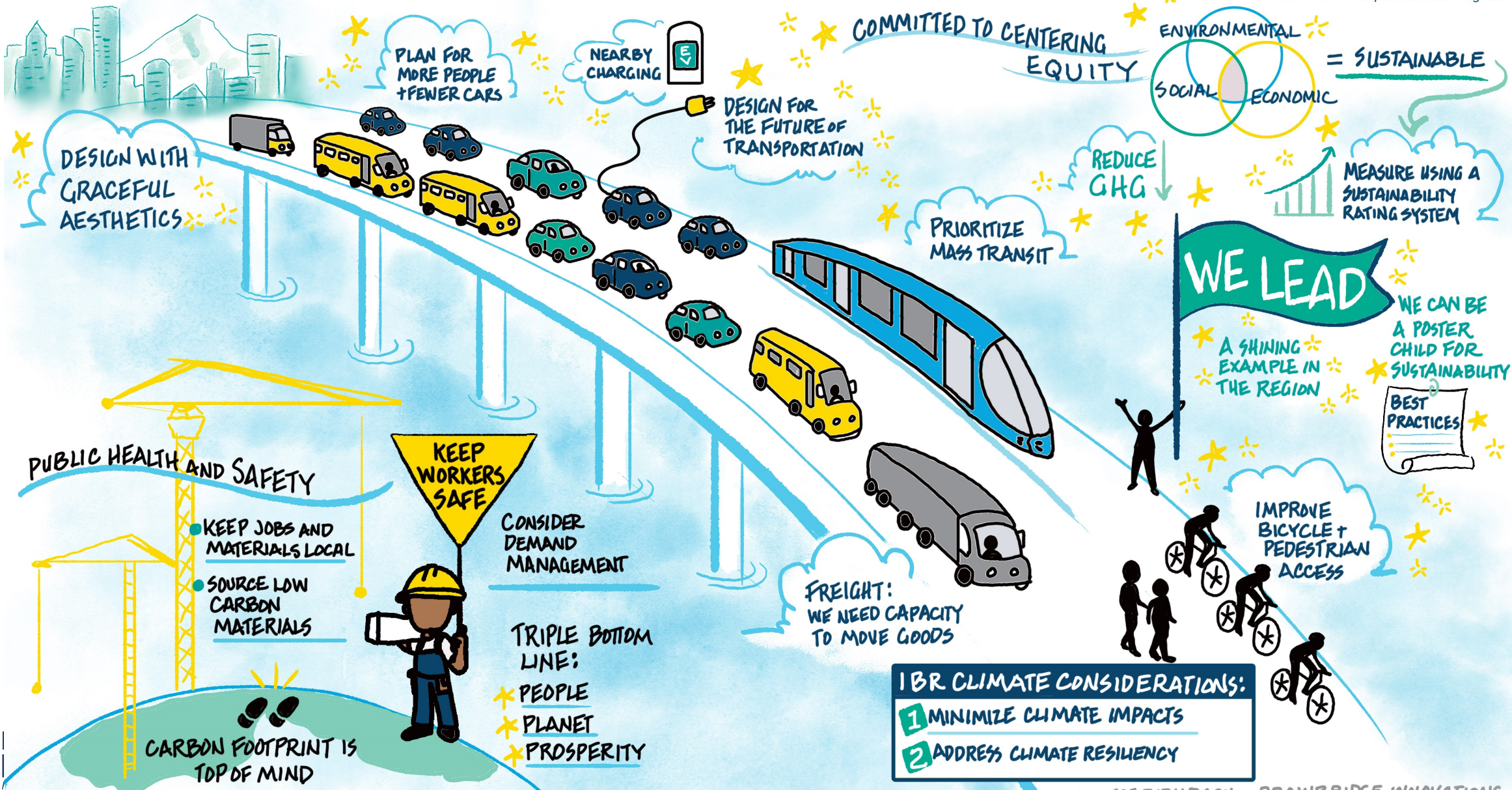
INCREASE TRANSPORTATION CHOICES

RESILIENT + WALKABLE NEIGHBORHOODS

JUNE 17 • 2021



SUSTAINABILITY + CLIMATE LISTENING SESSION



Applying the Climate Framework

- ▶ **Climate considerations for all aspects of the program, including but not limited to:**
 - Desired outcomes
 - Design option screening criteria
 - Bridge, highway and transit design
 - Program-level performance measures
 - IGAs and Community Benefits Agreements
 - Environmental impacts analysis and mitigation
 - Construction specifications and procurement strategies
 - Program commitments: community enhancements and mitigation

IBR Climate Engagement Looking Forward

- ▶ **June-August 2021**
Work with agency partners to develop and draft Climate Framework components
- ▶ **August 5**
CAG: Review draft Climate Framework and get feedback
- ▶ **August/September**
EAG: High level overview of draft Climate Framework and discuss nexus with Equity
- ▶ **September–December 2021**
Work with agency partners to finalize Climate Framework and use to develop screening criteria, design options, and performance measures.



Questions?

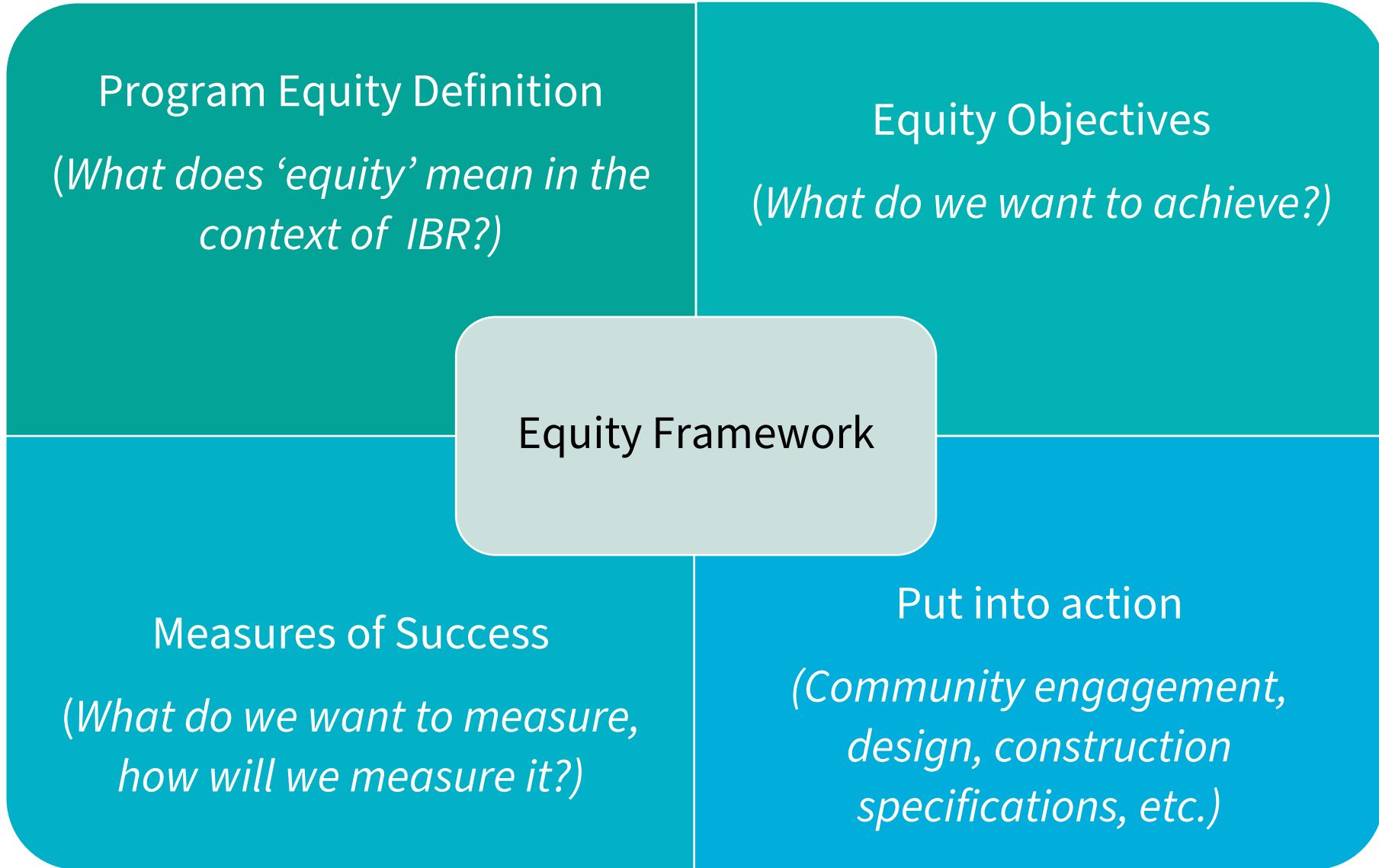


IBR Equity Framework

Johnell Bell, Principal Equity Officer

Equity Framework Development: Purpose

- ▶ **What does it mean to achieve equity through the Interstate Bridge Replacement Program, & how will we achieve it?**
 - An essential step of the IBR equity advancement strategy is to develop an Equity Framework to provide a shared understanding of what the Program seeks to achieve and how it will be achieved. The Framework identifies the steps the Program will take to advance equity, through both processes and outcomes.



Draft Equity Framework Outline - Key Elements (Overview)

1. Context/background
2. Equity Definition
3. Operationalizing Equity
 - a. Equity Objectives
 - b. Measures of success
 - c. Activities
4. Glossary
5. Authors and Contributors

1. Context/background

- ▶ Introduction/Purpose of the Framework
- ▶ Historic context
- ▶ IBR program equity commitment
- ▶ Demographic overview

2. Definition of Equity

The Interstate Bridge Replacement program defines equity in terms of both process and outcomes.

Process Equity means that the program prioritizes access, influence, and decision-making power for marginalized and underserved communities throughout the program in establishing objectives, design, implementation, and evaluation of success.

Outcome Equity is the result of successful Process Equity and is demonstrated by tangible transportation and economic benefits for marginalized and underserved communities.

Process Equity & Outcome Equity contribute to addressing the impacts of and removing long standing injustices experienced by these communities.

3. Operationalizing Equity

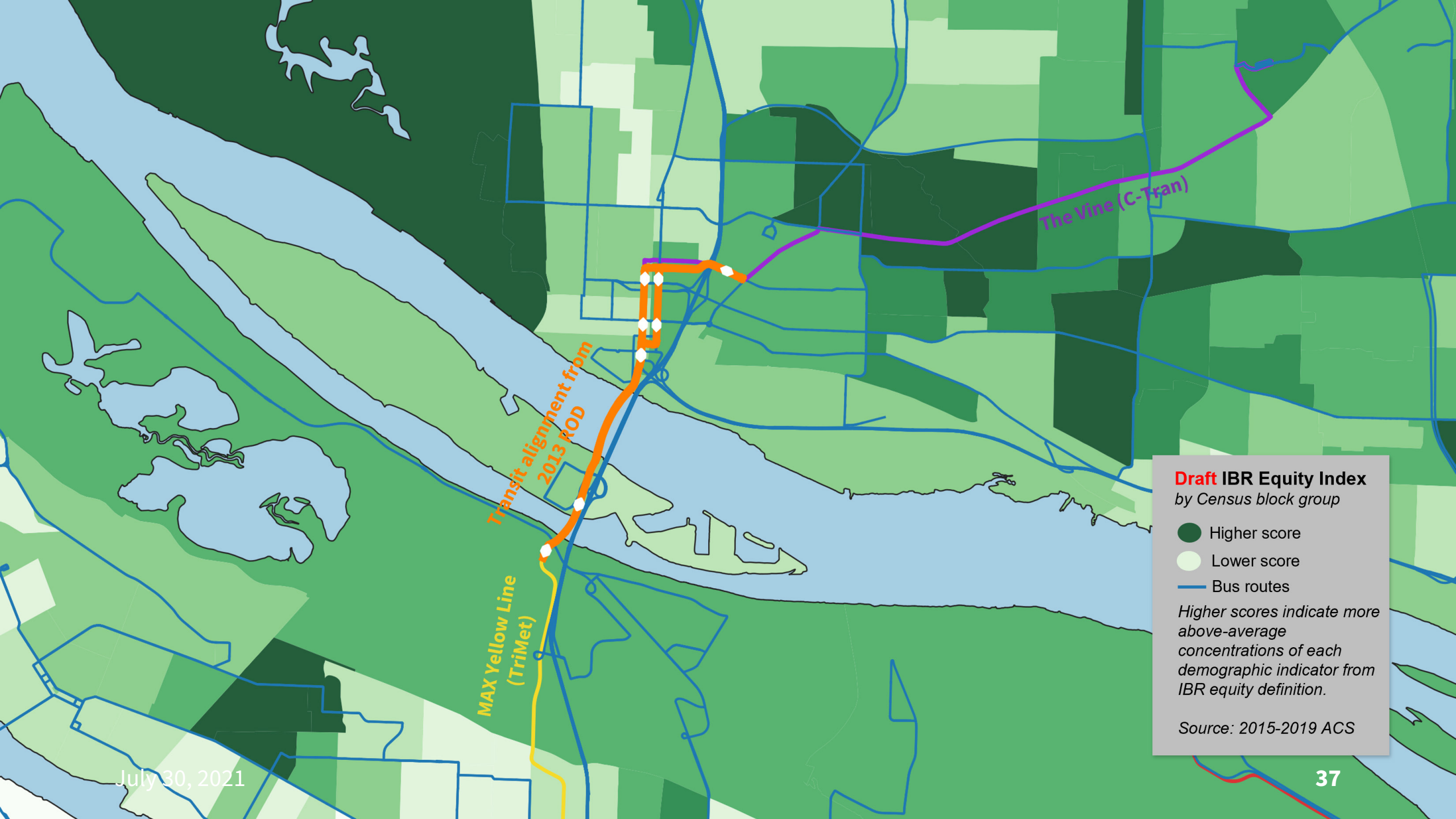
- ▶ Equity Results/Objectives
- ▶ Indicators & Performance Measures
 - How will we know we are achieving/making progress towards our equity objectives?
 - Includes NEPA Performance Measures
- ▶ Strategies
 - How will we meet the desired indicators?
 - Includes NEPA Screening Criteria
- ▶ Activities & Accountability
 - What is the timeline & who is responsible to implement each strategy?
 - Products & tools

IBR Equity Objectives

Mobility & Accessibility	Physical Design	Community Benefits	Economic opportunity	Decision-making processes	Avoiding further harm
Improve mobility, accessibility, and connectivity in the program area, with a particular focus on the needs of lower income travelers, people with disabilities, and communities who experience transportation barriers related to the location of affordable housing options.	Integrate equity into the physical design elements of the program.	Find opportunities for and implement local community improvements, in addition to required mitigations.	Ensure that economic opportunities generated by the program, including contracting and workforce development, substantially benefit minority and women owned firms, workers of color, workers with disabilities, and young people.	Meaningfully share access, participation, influence, and decision-making power with historically marginalized communities throughout the course of the program.	<u>Avoid</u> disproportionate impacts on communities of concern while implementing substantial mitigations for any unavoidable, but proportional, impacts.

4. Framework Products/Tools

- ▶ Equity Index
- ▶ Equity Lens
- ▶ Screening Criteria
- ▶ Performance Measures
- ▶ Mitigation & Equity Enhancement Commitments
- ▶ Other TBD



Draft IBR Equity Index
by Census block group

- Higher score
- Lower score
- Bus routes

Higher scores indicate more above-average concentrations of each demographic indicator from IBR equity definition.

Source: 2015-2019 ACS

“Big picture” Equity Lens questions

- What **decision** is being made?
- **Who** is at the table?
- **How** are decisions being made?
- What **assumptions** are at the foundation of the issue?
- What is the likely **impact**?

Source: United Way of Santa Cruz County

Applying an “equity lens”



Formal

“A transformative quality improvement tool used to improve planning, decision-making, and resource allocation leading to more racially equitable policies and programs.”

–Multnomah County Equity & Empowerment Lens



Informal

A general mindset: Are we considering how communities of concern might be impacted? How so?

IBR program decisions, timeline and data

Alex Prentiss, IBR program

IBR Program Timeline

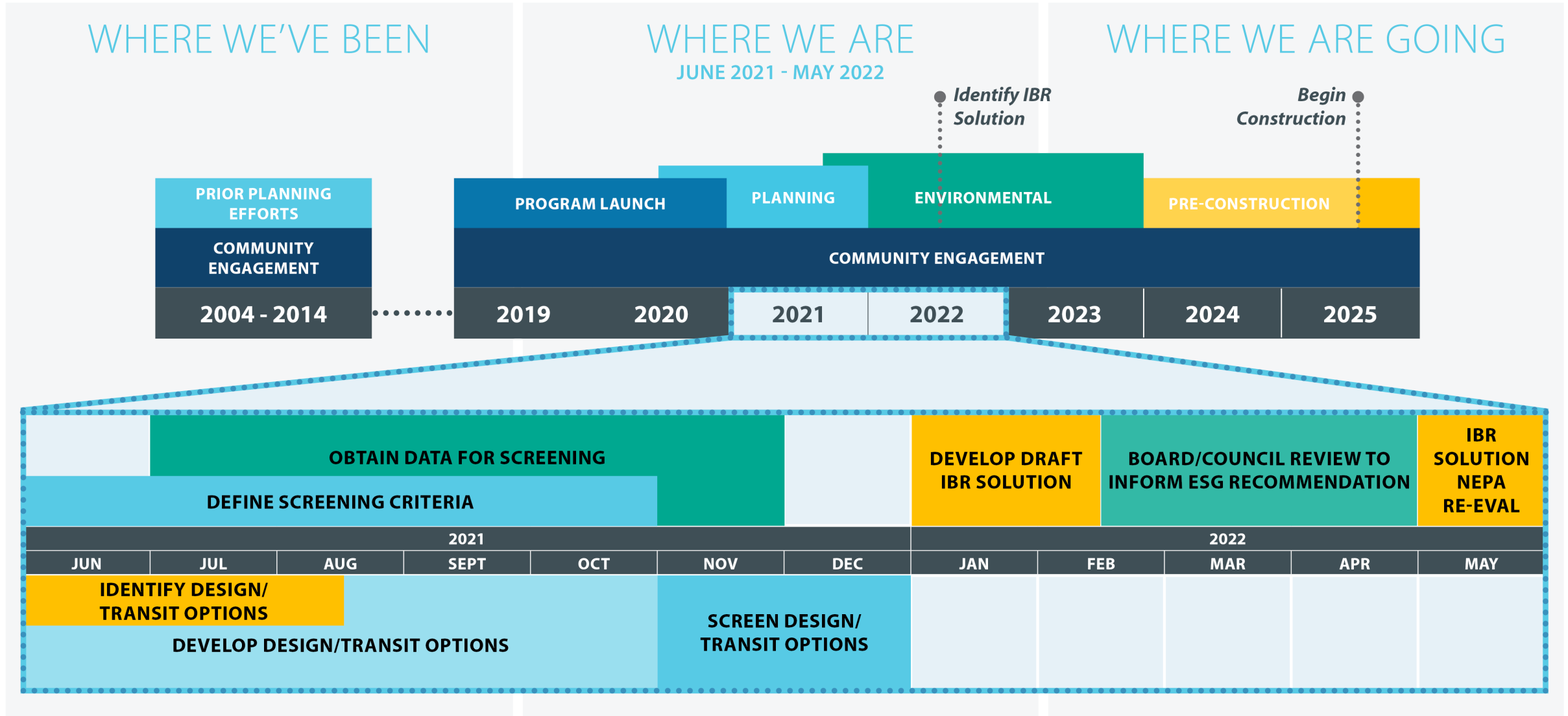


IBR 'North Star' Targets:

- ▶ One integrated program that includes:
 - a new river crossing over the Columbia River
 - high-capacity transit,
 - interchange improvements, and
 - active transportation improvements
- ▶ Identify and advance a single IBR alternative by end of 2021
- ▶ NEPA with a goal to achieve a Supplemental EIS
- ▶ Evaluate high-capacity transit options
- ▶ Replace North Portland Harbor I-5 Bridge
- ▶ Begin construction no later than 2025
- ▶ Next: How we will get there...



DRAFT: IBR Program Timeline



CAG open discussion

What's Next

Next Program Meetings

- ▶ Executive Steering Group –
 - September 15 from 11:00-1:00 p.m.

- ▶ Equity Advisory Group –
 - August 16th 5:30 – 7:30 p.m.

Public Comment

Comment Instructions

To make a verbal comment:

- ▶ To make a live comment via phone, dial: +1 669 900 6833 or +1 408 638 0968
 - ▶ Meeting ID: 993 5459 6043
 - ▶ Passcode: 674942
- ▶ Dial *9 to raise your hand
- ▶ The facilitator will call on participants to provide comment
- ▶ Dial *6 to unmute yourself
- ▶ Please provide your name and affiliation.
- ▶ 10-minute timeframe will be divided among the number of requested speakers.

If we run out of time and you have not had a chance to speak, you can still provide comments after the meeting.



Comment Instructions

To submit comment after the meeting:



- ▶ Fill out the comment form on the program website or email your comments to info@interstatebridge.org with “CAG Public Comment” in the subject line.



- ▶ Call **360-859-0494** (Washington), **503-897-9218** (Oregon), **888-503-6735** (toll-free) and state "CAG Public Comment" in your message.
- ▶ Written comments need to explicitly say “**CAG Public Comment**” in the subject line or in the body of the message for them to be identified and distributed to CAG members.
- ▶ All written comments must be received prior to 48 hours in advance of each upcoming meeting in order to be distributed to advisory group members. Comments received after that point will be distributed to members in advance of their next meeting.

Wrap up

Final Thoughts



Thank you!

