



Community Benefits Advisory Group Meeting

September 27, 2023



Closed Captions in English and Spanish

English closed captions are available within Zoom and YouTube.

Users can follow this link to view both English and Spanish captions in a separate browser window:

<https://ibr.news/captions>

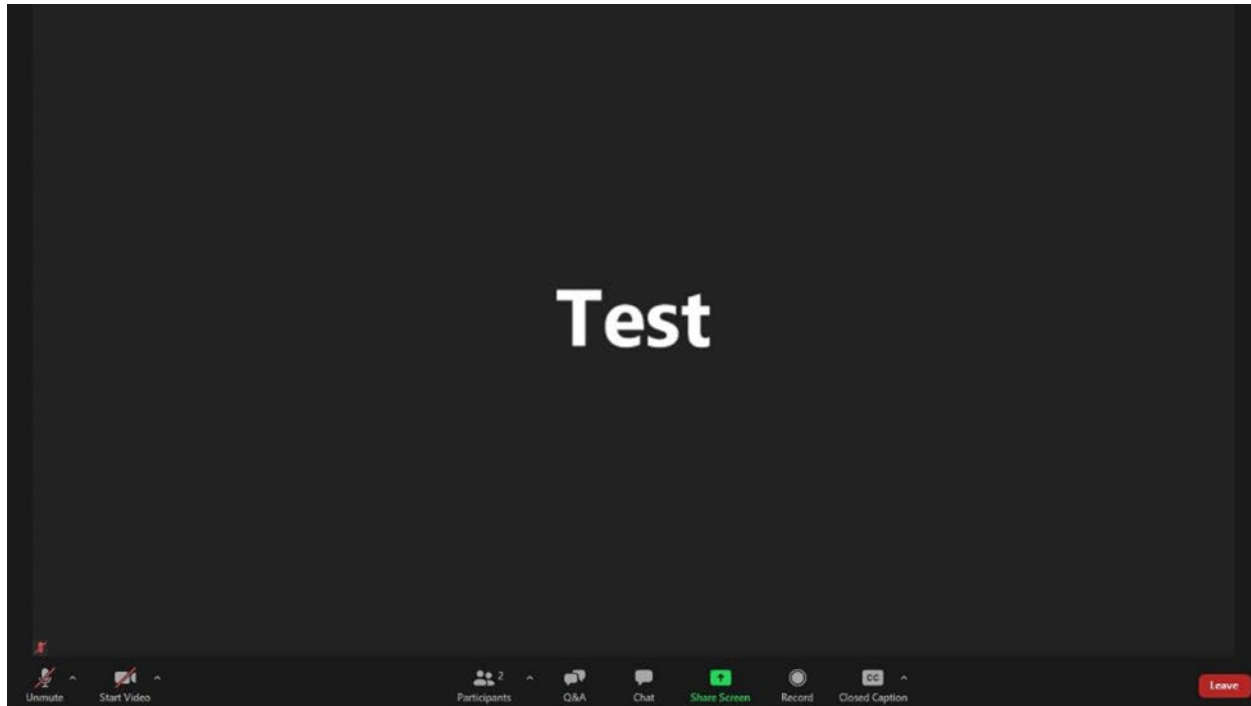
Subtítulos disponible en Inglés y Español

Los subtítulos en Inglés están disponibles en Zoom y YouTube.

Usuarios pueden seguir este enlace para ver los subtítulos en Inglés y Español en una ventana separada del navegador:

<https://ibr.news/captions>

How to access closed captions



1. At the bottom middle of your screen, you should see a menu of options. If you can't see the menu, hover your mouse over the bottom middle of the screen.
2. Then click on the “CC” icon and a separate window with captions will appear.



ASL Interpretation

- ▶ In the effort to continue to center equity there is an ASL interpreter in addition to closed captioning.
- ▶ To make sure the interpreter is always visible please right click their video and select spotlight video.
- ▶ For those watching on YouTube, when we screenshare, you will be able to see the slideshow, closed captioning and the ASL interpreter. You will still be able to hear different people speaking but may not see them.

Public Input Instructions

- ▶ There will be an opportunity to provide brief public input later in the meeting today (around 3:45 PM).
- ▶ Verbal public comment will be welcome in the Zoom webinar during the designated time, with the option to turn on your camera.
 - Please use the link located in the meeting description on the YouTube meeting page or on the IBR CAG meeting webpage.
 - Commenters will not be allowed to share their screens and will be removed from the room once the public comment period concludes.
- ▶ **To comment by phone:**
 - Dial: +1 646 931 3860
 - Enter meeting ID: 986 0940 5983, passcode: 701376
 - Dial *9 to raise your hand
 - After you are invited to speak, dial *6 to unmute yourself.



Welcome CBAG Members

Greg Johnson, Program Administrator

CBAG Sharing

▶ Welcome

- Greg Johnson, Program Administrator
- Mayor Anne McEnery-Ogle, City of Vancouver
- Commissioner Mingus Mapps, City of Portland

▶ Introductions – CBAG Members

- Please share your name, organizational affiliation or at-large status, and pronouns
- Check in:
 - *What lenses do you bring to the discussion of community benefits?*

Meeting Agenda

Time	Topic
2:00 p.m.	<ul style="list-style-type: none">• Call to Order• Welcome<ul style="list-style-type: none">○ Members' Introductions• CBAG Purpose & Goals
2:40 p.m.	<ul style="list-style-type: none">• Meeting Overview• Group Agreements• Program Overview<ul style="list-style-type: none">○ Q&A
3:10 p.m.	<ul style="list-style-type: none">• CBAG Framework Presentation<ul style="list-style-type: none">○ Q&A
3:25 p.m.	<ul style="list-style-type: none">• Next Steps<ul style="list-style-type: none">○ Overview of draft 6 month workplan○ Q&A
3:45 p.m.	<ul style="list-style-type: none">• Public Comment
3:50 p.m.	<ul style="list-style-type: none">• Closing

Group Agreements

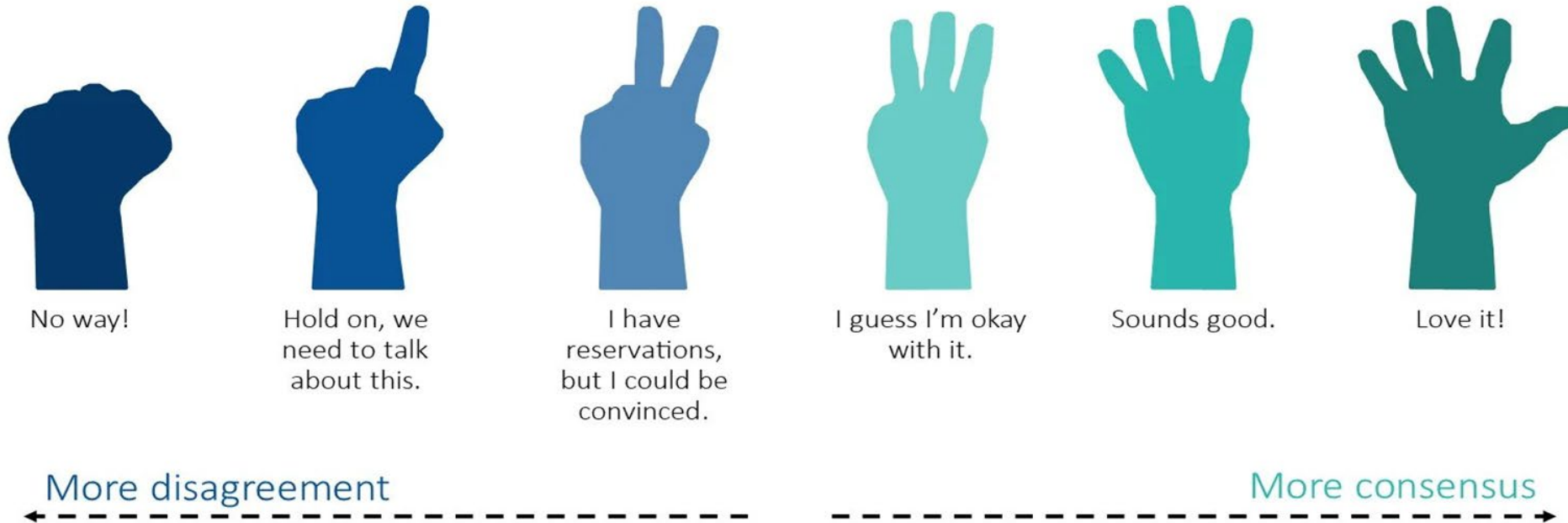
- ▶ Put relationships first
- ▶ Keep focused on our common goal
- ▶ Notice power dynamics in the room
- ▶ Create a space for multiple truths & norms
- ▶ Be kind and brave
- ▶ Practice examining racially biased systems and processes
- ▶ This is a learning space for everyone, look for learning
- ▶ Advisory group members will turn cameras on as you share this space together
- ▶ Take care of your personal needs as they come up. Let the facilitator know if you need to step away.
- ▶ Participate by sharing your response in the chat, taking written notes, or by raising your hand to speak
- ▶ Welcome diverse perspectives; it's okay to disagree
- ▶ Move Up, Move Up
- ▶ Assume and have good intentions

Modified Consensus Decision Making Model

- ▶ Participants develop and decide on proposals with the aim of acceptance by all.
- ▶ Including the input of all committee members results in better proposals that helps to address all potential concerns.
- ▶ Fosters a collegial group resulting in cohesion and interpersonal connection.
- ▶ Requires active participation and working through differences.

Modified Consensus Decision Making Model

Which best describes your level of agreement?



When a CBAG member is approached by the news media

- ▶ Note the name and contact information of the journalist, and the name of the news outlet
- ▶ Provide this information to the IBR program Public Information Officer, Kelliann Amico at kellian.amico@interstatebridge.org or 503-705-6207



Program Overview

Greg Johnson, Program Administrator

Interstate Bridge Replacement Program

Critical connection linking Oregon and Washington across the Columbia River

- Part of a vital regional, national, and international trade route
- The only movable bridge on I-5 between Canada and Mexico
- One span over 100 years old
- At risk for collapse in the event of a major earthquake
- \$1.2 million in annual Operations and Maintenance (O&M) costs
- Capital maintenance is estimated to cost over \$270 million by 2040



September 27, 2023

Initiating IBR Efforts

- ▶ Bi-state Memorandum of Intent signed by Governors Brown and Inslee in November 2019
- ▶ Bi-state legislative committee oversight and guidance to shape program work
- ▶ ODOT and WSDOT are jointly leading the program work in collaboration with eight other bi-state partner agencies:
 - Oregon Metro
 - SW WA Regional Transportation Council
 - TriMet
 - C-TRAN
 - City of Portland
 - City of Vancouver
 - Port of Portland
 - Port of Vancouver



Photo courtesy of Office of Governor Kate Brown



September 27, 2023

Purpose and Need



Safety: Narrow lanes, no shoulders, poor sight distances, bridge lifts, and substandard ramp merging and diverging contribute to accidents.



Earthquake vulnerability: In a major earthquake, the bridge would likely be significantly damaged, potentially beyond repair.



Impaired freight movement: Congestion and bridge lifts slow down freight carrying goods along I-5, a critical economic trade route on the West Coast.



Inadequate bike & pedestrian paths: Narrow shared-use paths, low railing heights, and lack of dedicated pathways impede safe travel.



Congestion: Over 143,000 vehicles crossed the Interstate Bridge each weekday in 2019, resulting in 7 to 10 hours of congestion during peak travel times.



Limited public transportation: Limited transit options and existing bus service can be unreliable due to traffic congestion and/or bridge lifts.

Equity and Climate are Key Priorities



Equity Advisory Group

- ▶ Maximize benefits and minimize burdens for equity-priority communities
- ▶ Center equity-priority community engagement and feedback
- ▶ Support state climate goals of reduction in greenhouse gas emissions and air quality improvements
- ▶ Improve infrastructure resilience to future climate disruptions

Interstate Bridge Replacement Program

River Crossing:

New earthquake-resilient, multimodal bridge

Roadway:

Adds safety shoulders and auxiliary lanes and modifies 7 closely spaced interchanges

Transit:

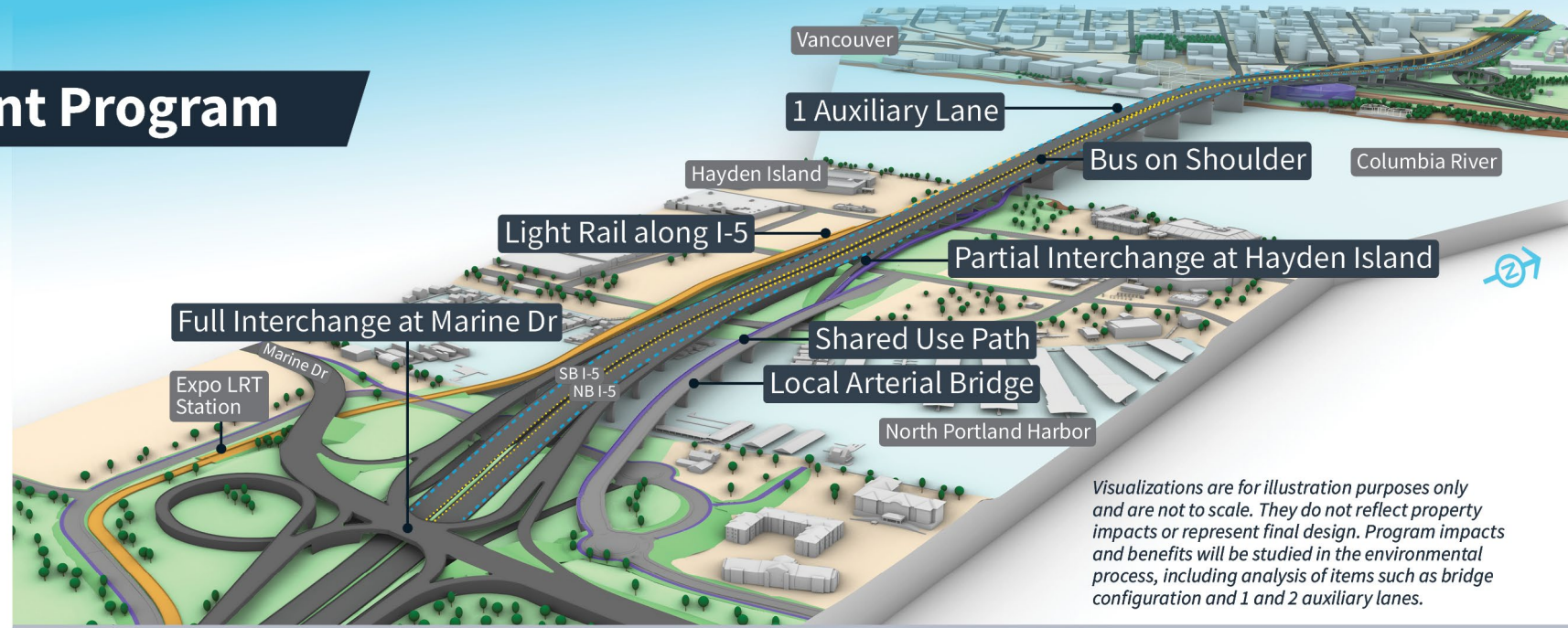
Extends Light Rail and adds express bus on shoulder to better connect transit systems

Active Transportation:

Safe and accessible shared use paths

North Portland Harbor:

New earthquake-resilient bridge



Visualizations are for illustration purposes only and are not to scale. They do not reflect property impacts or represent final design. Program impacts and benefits will be studied in the environmental process, including analysis of items such as bridge configuration and 1 and 2 auxiliary lanes.

Benefits:

Creates earthquake resilient corridor that improves safety, congestion, and reliability

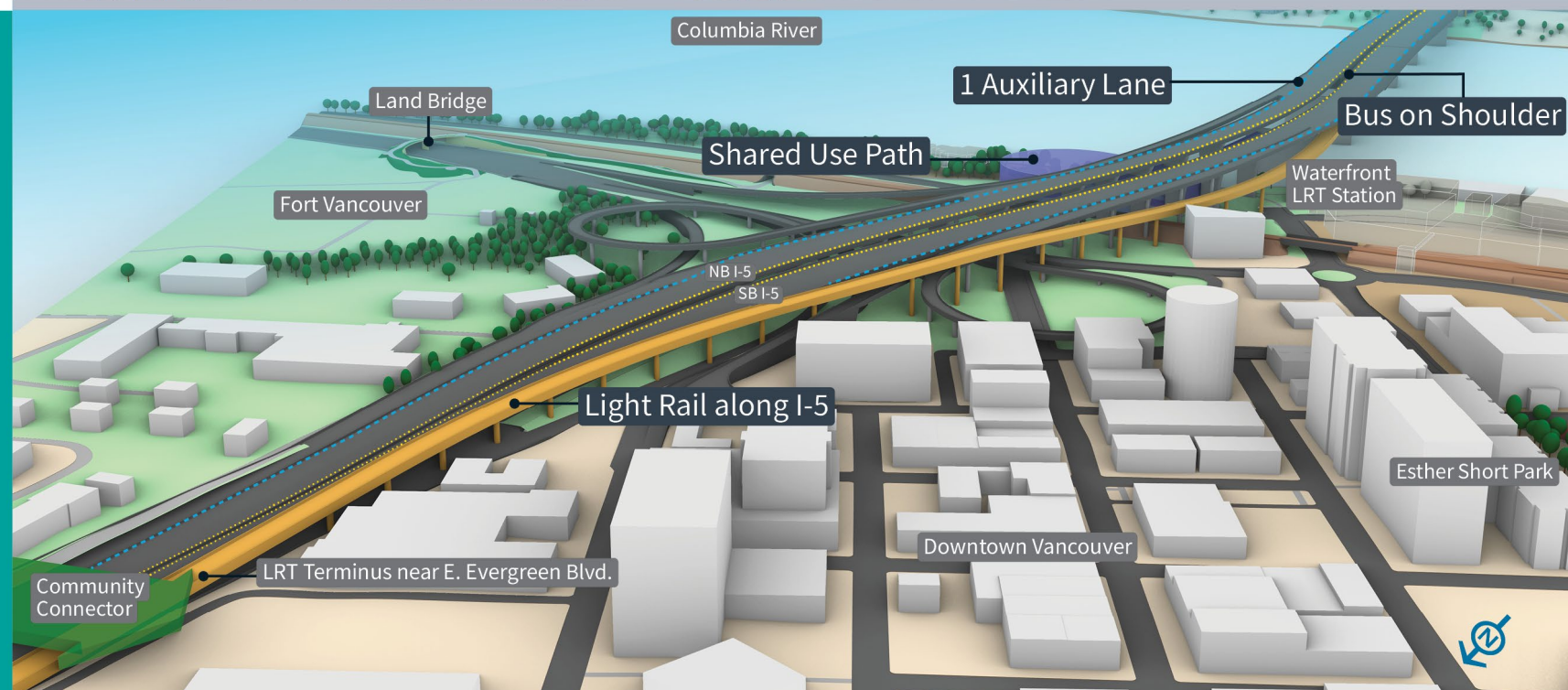
Maximizes benefits and minimizes burdens for equity-priority communities

Improves freight movement and connections

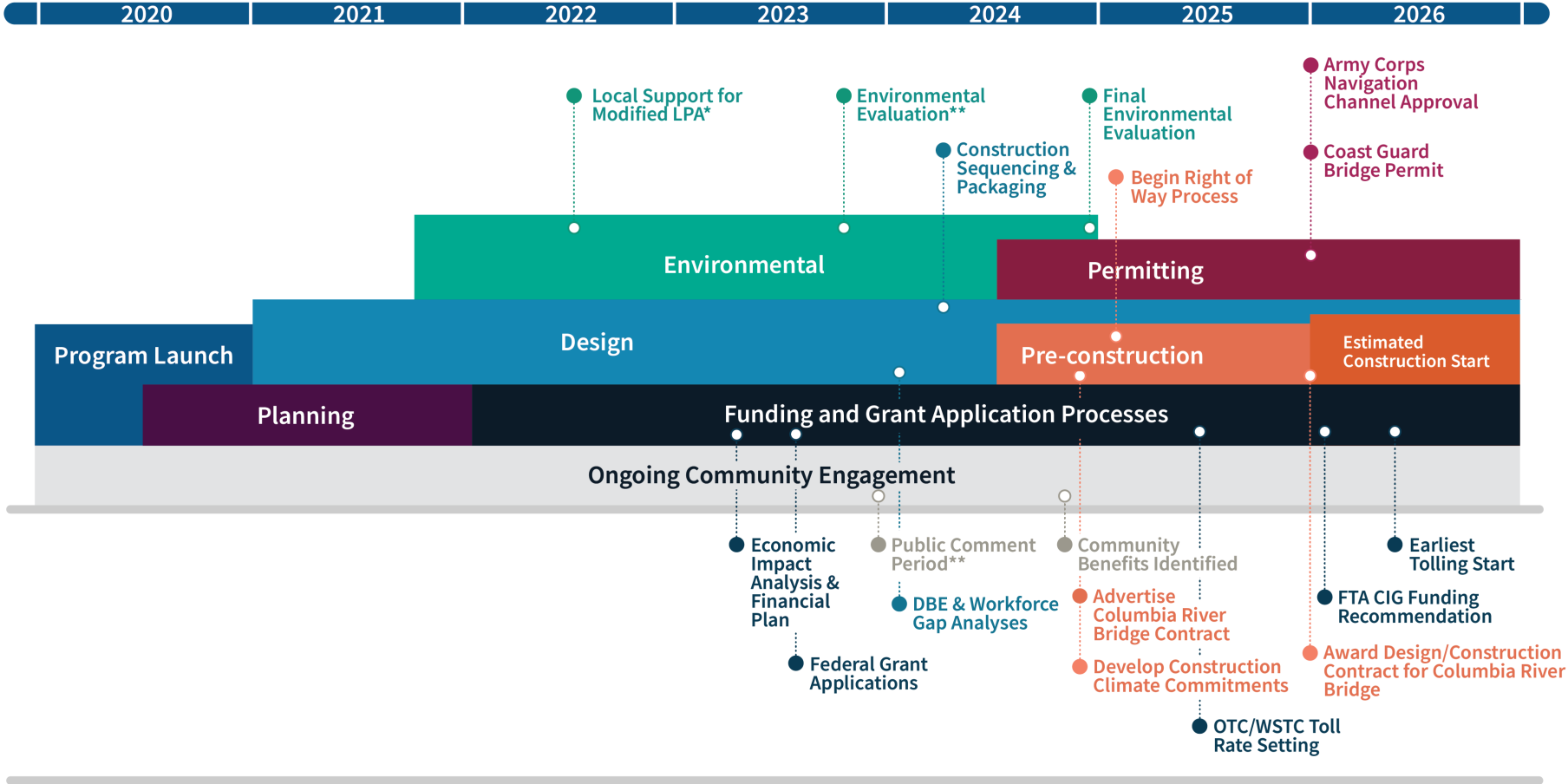
Expands transit options and accessible alternatives to single-occupancy vehicles

Supports tens of thousands of jobs and generates nearly 2x return on investment during construction

Supports climate goals of both states



Program Schedule



Working Draft as of 7/21/2023. Schedule will be updated as needed to reflect changes to program work and timeline.

*Partner agencies confirmed their support for foundational program investments identified in the Modified LPA (Locally Preferred Alternative) to advance for further study in Draft Supplemental Environmental Impact Statement (SEIS).

** The public comment period will extend for 60 days. Following public review of the Draft SEIS, refinements will be made to address comments and a corridor-wide alternative for analysis in the Final SEIS will be confirmed.

IBR Cost Estimate and Financial Plan

Frank Green, Assistant Program Administrator

IBR Cost Estimate Breakdown

- ▶ All elements of the program are needed to ensure a safe and effective multimodal corridor
- ▶ The cost breakdown does not indicate the anticipated sources of funds.

A

Washington Interchanges, Roadway and Shared Use Path
Cost Range: \$0.99 - \$1.49 billion

C

Interstate Bridge Replacement and Approaches**
Cost Range: \$1.64 - \$2.45 billion

B

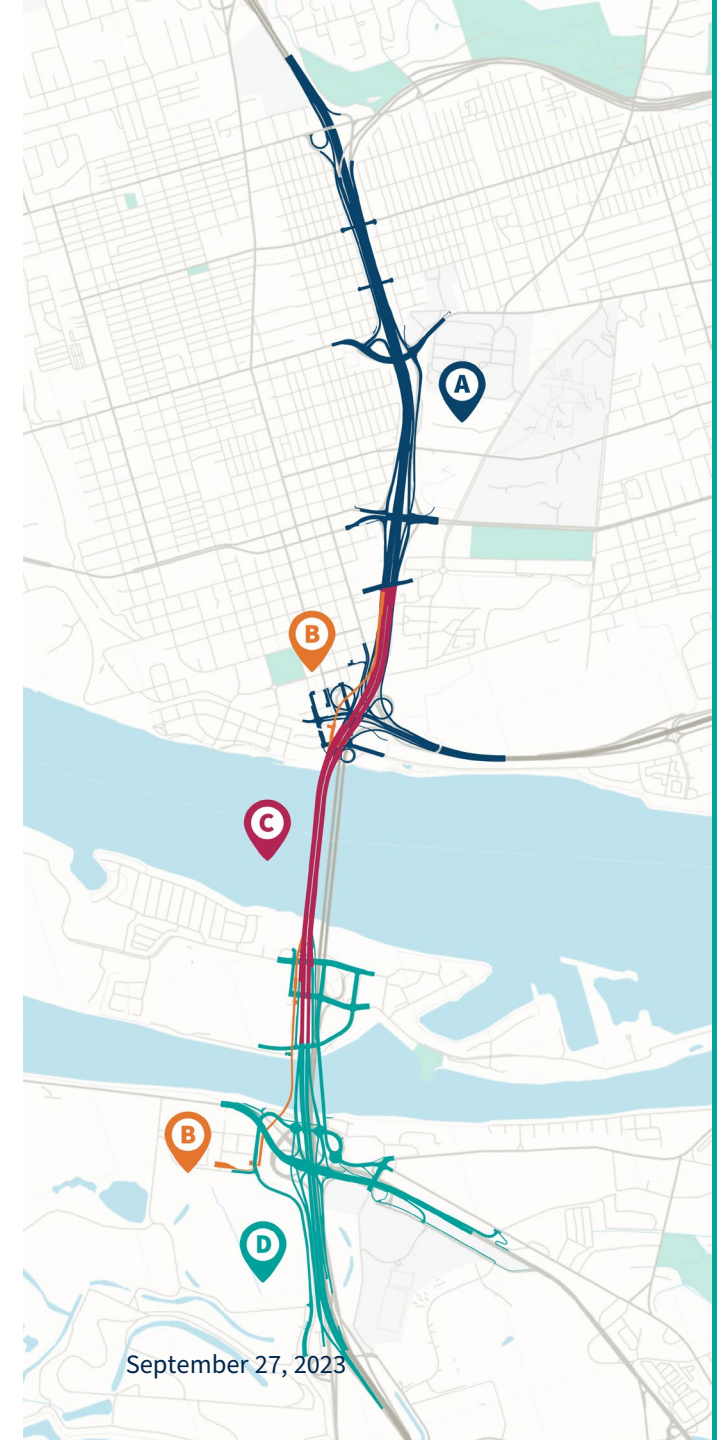
Transit Investments*
Cost Range: \$1.32 - \$1.99 billion

D

Oregon Interchanges, Roadway and Shared Use Path
Cost Range: \$1.05 - \$1.57 billion

* *Transit Investments cost estimate includes new stations, potential park and rides, and facilities to operate transit. This excludes a portion of the river bridge and approaches that will be included in transit costs when seeking federal grant funding.*

***The Replacement Bridge and Approaches cost estimate includes 100% of the cost of the bridge across the river (including shared use path and the transit share of the bridge structure), as well as bridge approaches and removal of the existing bridge.*



September 27, 2023

Proposed Funding Sources / Needs

► Cost Estimate: \$5 – 7.5 B

– Most likely \$6 B, assuming actively mitigated risks

	Status	Funding Range	Expected Value
Existing State Funding	Committed	\$100 M	\$100 M
Connecting WA Funding—Mill Plain Interchange	Committed ¹	\$117 M	\$117 M
Move Ahead WA Funding	Committed	\$1,000 M	\$1,000 M
Oregon Funding Contribution	Committed	\$1,000 M	\$1,000 M
Toll Funding	Committed ²	\$1,100 – 1,600 M	\$1,240 M
FTA New Starts CIG Funding	Prospective	\$900 – 1,100 M	\$1,000 M
FHWA/USDOT Federal Grants	Prospective ³	\$860 – 1,800 M	\$1,500 M
IBR Funding Totals		\$5,077 – 6,717 M	\$5,957 M

¹ These funds were deferred to a later date and adjusted for inflation by the Washington State Legislature in the 2023 session.

² Legislative authorization to toll has been secured in both states and toll funding of \$1.24 B has been confirmed by both states at toll rates assumed in the 2023 Financial Plan under a base case financing scenario. Toll rates and policies will be jointly set by the Washington State and Oregon Transportation Commissions.

³ \$1.0 M in the Federal Grants funding range is committed via FFY 2022 BIP Planning Grant award.

IBR Construction Economic Impacts

▶ Total Economic Activity:

- Direct Project Expenditures (Project Cost): **\$5.9 B**
- Total Gross Economic Activity: **\$11.6 B**
- Minimum Net New Economic Activity: **\$3.6 B***

▶ Total Employment (person-year jobs):

- Direct Project Construction Employment: **18,700**
- Total Gross Employment: **43,300**
- Minimum Net New Employment: **13,460***

▶ As the IBR scope and cost estimates are refined, we will continue to update the Economic Impact Analysis

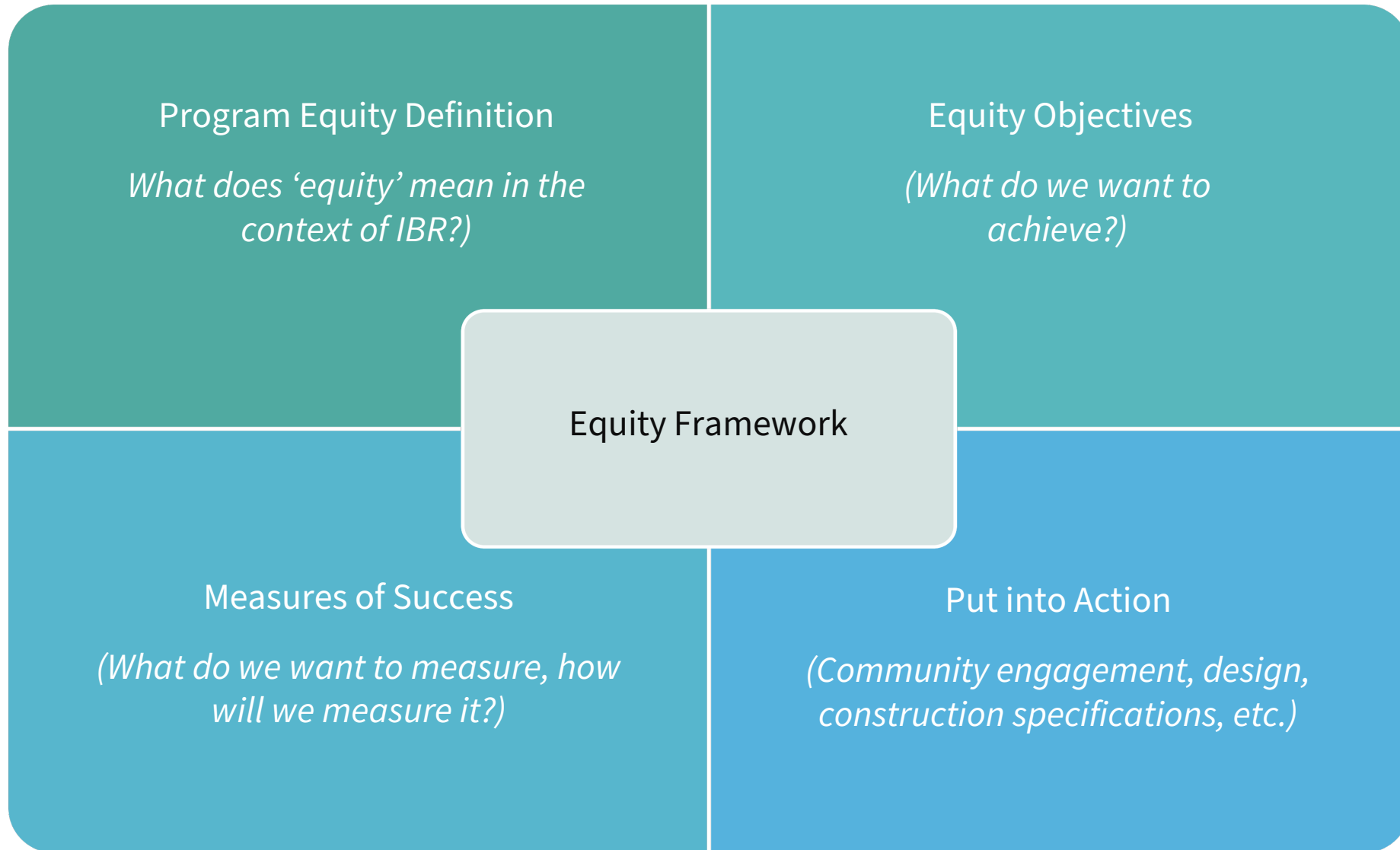


**Minimum net values capture the effects attributed to anticipated federal discretionary grants that without IBR would not be received and expended locally*

IBR Community Benefits

Shannon Singleton, IBR Community Benefits Lead

Emilee Thomas Peralta, IBR Equity Team



Alignment with IBR Equity Framework

► Community Benefits will be tied to the equity objectives:

Mobility and accessibility: Improve mobility, accessibility, and connectivity, especially for lower income travelers, people with disabilities, and historically underserved communities who experience transportation barriers.

Physical design: Integrate equity, area history, and culture into the physical design elements of the program including bridge aesthetics, artwork, amenities, and impacts to adjacent land uses.

Community benefits: Find opportunities for and implement local community improvements in addition to required mitigations.

Workforce equity and economic opportunity: Ensure that economic opportunities generated by the program benefit minority and women owned firms, BIPOC workers, workers with disabilities, and young people.

Decision-making processes: Prioritize access, influence, and decision-making power for Equity Priority Communities throughout the program in establishing objectives, design, implementation, and evaluation of success.

Avoid further harm: Actively seek out options with a harm-reduction priority rather than simply mitigate disproportionate impacts on historically impacted and underserved communities and populations.

Defining Community Benefits on IBR

- ▶ **Expectation that IBR Community Benefits WILL Be:**
 - Developed with extensive community involvement
 - Establishes a range of recommended potential benefits for the local community that reflect:
 - *IBR Equity Framework principles*
 - *Diverse needs and perspectives of community*
 - A key cornerstone of how the program is implementing its commitment to equity
 - Captured in contract specifications, environmental documents, or referred to in future Project Labor (PLA) and/or Community Workforce Agreements (CWA)
 - A cooperative commitment between program partners and other parties

Defining Community Benefits on IBR

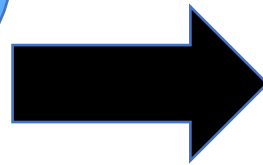
- ▶ **IBR Community Benefits Will NOT Be:**
 - A specific agreement just addressing community benefits
 - A Project Labor Agreement (PLA) or a Community Workforce Agreement (CWA)

Community Benefits Examples

- Construction mitigations
- Development of public/community spaces (parks, trails, access points, etc.)
- Public art opportunities (bridge aesthetics)
- Community centers
- Support for affordable housing development

Examples of CBA Elements that Support PLAs/DBEs/Workforce

- Targeted hiring programs*
- Job training programs*
- Childcare assistance for workers
- Transportation subsidies for workers
- Mentorship programs



Project Labor/Community Workforce Agreement (PLA/CWA) Examples

- Union recognition and employment
- Management's rights
- Working conditions & rules
- Disputes and grievances processes
- Wages and benefits
- Referral requirements
- Apprentices & Trainees (goals & requirements)
- Safety & protections
- Non-discrimination
- Compliance
- Helmets to Hardhats

Sometimes include:

- Targeted hiring
- DBE exemptions
- Mentorship/training
- Committees to promote workforce participation for women and underrepresented communities
- Establishment of Work and Economic Opportunity framework
- DEI training

*Elements that are sometimes included within PLAs/CWAs



CBAG Charter

Components of Community Benefits

IBR Community Benefits may include the following categories:

Plans and mitigations already included in the program

Examples: local street improvements, construction mitigations, community connectors, etc.

Program partner conditions

Examples: climate goals and tracking, mitigations for pedestrians and bicycles, etc.

Partner agency contributions

Example: housing development dollars from City of Portland, City of Vancouver, and/or Metro

Additional benefits identified by Community Benefits Advisory Group and the community

Examples: support for workforce (e.g., childcare) and DBEs, community centers, etc.

Community Benefits Advisory Group (CBAG)

- ▶ The purpose lies in the mitigation of impacts the construction of a mega project can have on neighborhoods and businesses in the program area during construction. Another important consideration of these discussions is to ensure the context of this infrastructure investment aligns with the community's future vision. Community Benefits discussions are also rooted in the historical treatment of equity priority communities and therefore, must be aligned with the IBR program's equity principles to ensure equitable processes and outcomes of this effort.
- ▶ **Within the scope of the IBR program the CBAG will:**
 - Apply the Community Values & Priorities developed by CAG to the CBAG recommendation development process
 - Advise IBR on how to leverage the program's work and partnerships to achieve the greatest positive benefit to the communities in the program area and broader region from the program's work
 - Explore community benefits that align with the program's equity objectives
 - Advise IBR on the establishment of accountability mechanisms for commitments made in the CBAG process

CBAG Structure

- ▶ **Balanced representation from Oregon and Washington**
- ▶ **Includes representatives from EAG and CAG**
- ▶ **CBAG member representation includes:**
 - Program area residents
 - Program area business owners
 - Workforce development
 - Housing
 - Culturally-specific CBOs and businesses
 - Disability rights
 - Environmental Justice (those advocating for equity in environmental protections)
 - Parks & Recreation

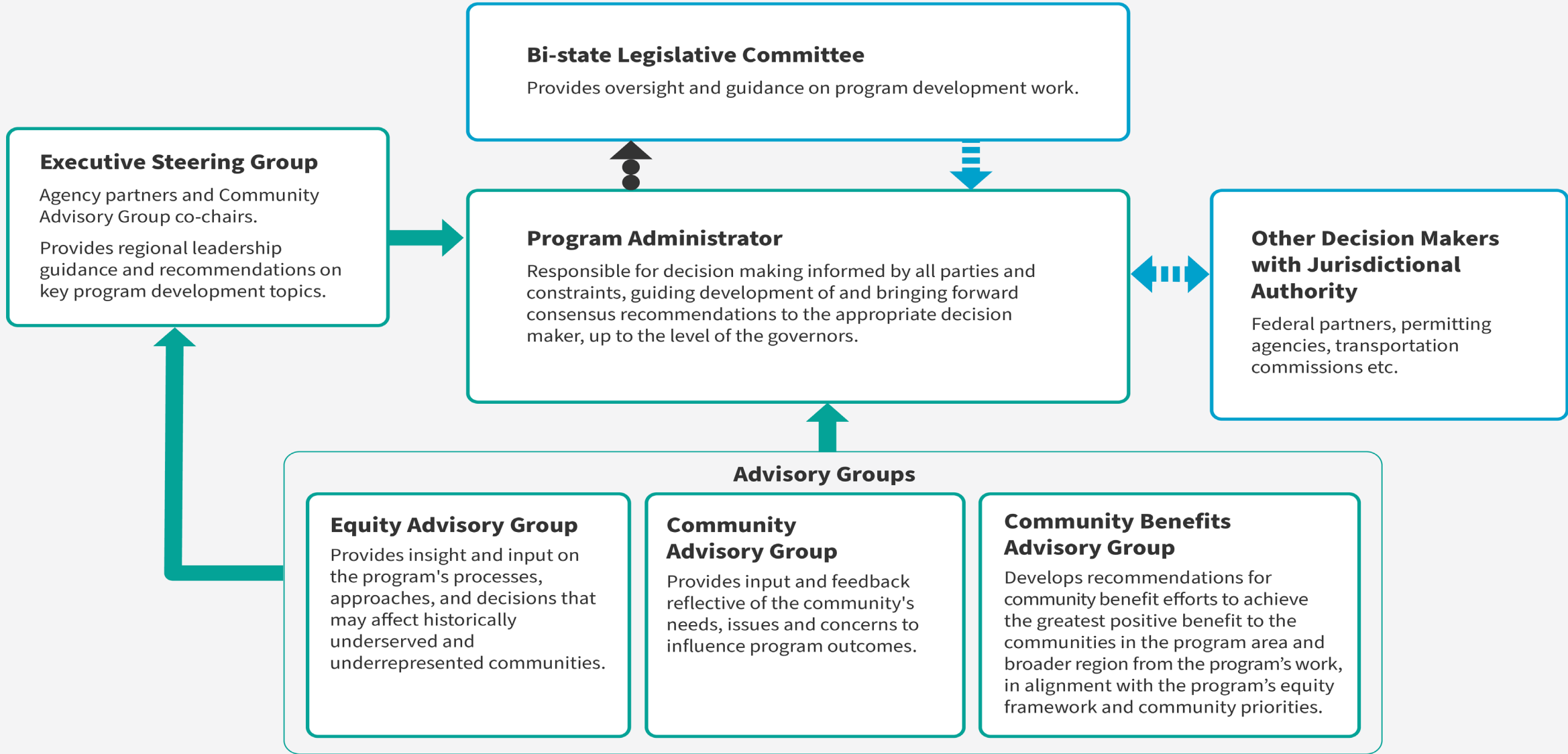
CBAG Meetings

- ▶ The advisory group will meet at-least-monthly from September 2023 – March 2025.
- ▶ 2-hour meetings
- ▶ Meetings in a hybrid mode and will alternate between Oregon and Washington's locations.
- ▶ Members are expected to make every attempt to attend all meetings.

CBAG Commitment

CBAG members commit to:

- ▶ Adhere to group norms;
- ▶ Attend meetings;
- ▶ Rely on the IBR program's Equity Framework to guide the process;
- ▶ Work collaboratively and in good faith with each other and IBR staff;
- ▶ Show up to meetings having reviewed materials provided and ready to actively participate;
- ▶ Notice the power dynamics in the room by staying aware of one's privilege and the amount of airtime they consume;



KEY: Recommendations Oversight/Guidance
 Regular briefings on program work and advisory group recommendations

NOTE: Location on graphic does not indicate hierarchy. This diagram is intended as a high-level overview and does not show all engagement points.

What's Next?

CBAG Workplan

- ▶ October 2023
 - Potential CBAG framework elements
- ▶ November 2023
 - Visioning and Community Benefits
- ▶ December 2023
 - Potential CBAG framework elements
- ▶ January 2024
 - Final recommendations on 1st group of framework elements
- ▶ February 2024
 - Framework elements: Mobility and Accessibility
- ▶ March 2024
 - Framework elements: Community Benefits

Next Program Meetings

- ▶ Community Advisory Group (CAG)
 - October 12, 2023 – 4:00-6:00 PM
- ▶ Equity Advisory Group (EAG)
 - October 16, 2023 – 5:30-7:30 PM
- ▶ Community Benefit Advisory Group (CBAG)
 - October 26, 2023 – 9:30-11:30 AM

Public Comment

Comment Instructions

To make a verbal comment:

- ▶ To make a live comment via phone, dial: +1 646 931 3860 or +1 408 638 0968
 - ▶ Meeting ID: 986 0940 5983
 - ▶ Passcode: 701376
- ▶ Dial *9 to raise your hand
- ▶ The facilitator will call on participants to provide comment
- ▶ Dial *6 to unmute yourself
- ▶ Please provide your name and affiliation
- ▶ 10-minute timeframe will be divided among the number of requested speakers

If we run out of time and you have not had a chance to speak, you can still provide comments after the meeting.



Comment Instructions

To submit comments after the meeting:



- ▶ Fill out the comment form on the program website or email your comments to info@interstatebridge.org with “CBAG Public Comment” in the subject line.
- ▶ Call **360-859-0494** (Washington), **503-897-9218** (Oregon), **888-503-6735** (toll-free) and state "CBAG Public Comment" in your message.
- ▶ Written comments need to explicitly say “**CBAG Public Comment**” in the subject line or in the body of the message for them to be identified and distributed to CBAG members.
- ▶ All written comments must be received prior to 48 hours in advance of each upcoming meeting in order to be distributed to advisory group members. Comments received after that point will be distributed to members in advance of their next meeting.





Wrap up

Final Thoughts



Thank you!



September 27, 2023