



Community Advisory Group Meeting

October 12, 2023



Closed Captions in English and Spanish

English closed captions are available within Zoom and YouTube.

Users can follow this link to view both English and Spanish captions in a separate browser window:

<https://ibr.news/captions>

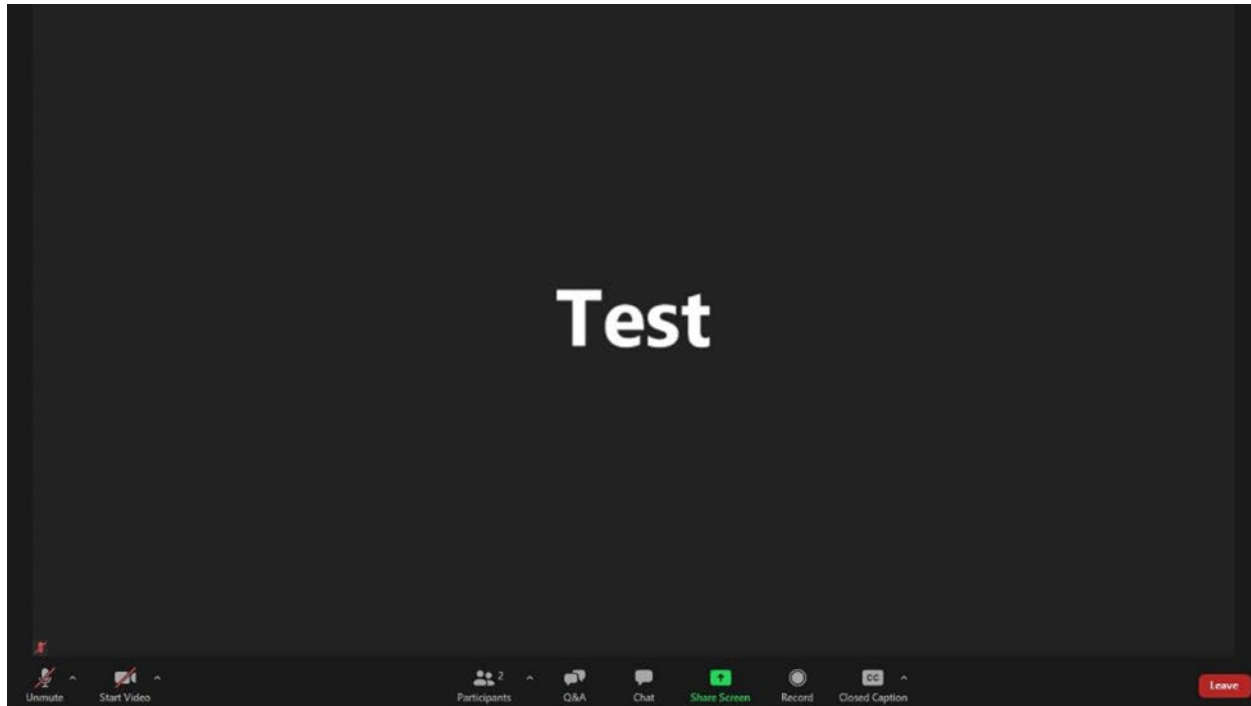
Subtítulos disponible en Inglés y Español

Los subtítulos en Inglés están disponibles en Zoom y YouTube.

Usuarios pueden seguir este enlace para ver los subtítulos en Inglés y Español en una ventana separada del navegador:

<https://ibr.news/captions>

How to access closed captions



1. At the bottom middle of your screen, you should see a menu of options. If you can't see the menu, hover your mouse over the bottom middle of the screen.
2. Then click on the “CC” icon and a separate window with captions will appear.



ASL Interpretation

- ▶ In the effort to continue to center equity there is an ASL interpreter in addition to closed captioning.
- ▶ To make sure the interpreter is always visible please right click their video and select spotlight video.
- ▶ For those watching on YouTube, when we screenshare, you will be able to see the slideshow, closed captioning and the ASL interpreter. You will still be able to hear different people speaking but may not see them.

Webinar Participation Tips

- ▶ Thank you for joining us today!
- ▶ Please join audio by either phone or computer, not both. We encourage panelists to turn on your video.
- ▶ Please keep your audio on mute when not speaking.
- ▶ If you experience technical difficulties, please contact program staff at:
(360) 329-6744

Public Input Instructions

- ▶ **There will be an opportunity to provide brief public input later in the meeting today (around 5:45PM).**
- ▶ **Verbal public comment will be welcome in the Zoom Webinar during the designated time, with the option to turn on your web camera.**
 - Please use the link located in the meeting description on the YouTube meeting page or on the IBR CAG meeting webpage.
 - Commenters will not be allowed to share their screens and will be removed from the room once the public comment period concludes.
- ▶ **To comment by phone:**
 - Dial: +1 669 900 6833 or +1 408 638 0968
 - Enter meeting ID: 993 5459 6043, passcode: 674942
 - Dial *9 to raise your hand
 - After you are invited to speak, dial *6 to unmute yourself



Public Input Instructions

► To submit comment after the meeting:

- Fill out the comment form on the program website or email your comments to **info@interstatebridge.org** with “CAG Public Comment” in the subject line.
- Call **360-859-0494** (Washington), **503-897-9218** (Oregon), or **888-503-6735** (toll-free) and state "CAG Public Comment" in your message.
- Written comments need to explicitly say “**CAG Public Comment**” in the subject line or in the body of the message for them to be identified and distributed to CAG members.
- All written comments must be received prior to 48 hours in advance of each upcoming meeting in order to be distributed to advisory group members. Comments received after that point will be distributed to members in advance of their next meeting.



Our CAG Meeting Space

- ▶ Put relationships first
- ▶ Keep focused on our common goal
- ▶ Notice power dynamics in the room
- ▶ Create a space for multiple truths & norms
- ▶ Be kind and brave
- ▶ Practice examining racially biased systems and processes
- ▶ Look for learning



Meeting Agenda

Time	Topic
4:00 p.m.	Welcome & Updates <ul style="list-style-type: none">○ Meeting Overview○ Introductions and Check In○ Program Update
4:35 p.m.	IBR Community Benefits Advisory Group (CBAG) <ul style="list-style-type: none">○ Overview○ CBAG Purpose & Goals○ Q&A○ Discussion
4:55 p.m.	Tolling Update <ul style="list-style-type: none">○ Overview○ Q&A○ Discussion
5:30 p.m.	Recent and Upcoming Community Engagement Activities
5:50 p.m.	Public Comment
5:55 p.m.	Closing

October 12, 2023

Welcome CAG Members

Ed Washington & Lynn Valenter

CAG Co-Chairs

CAG Sharing

- ▶ Welcome
 - Ed Washington, Co-Chair
- ▶ Open Discussion – CAG Members
 - Please share your name, organizational affiliation or at-large status, and pronouns
 - Check in:
 - *What comes to mind when you hear the word 'community'?*

Program Update

Greg Johnson, Program Administrator

Recent Program Updates

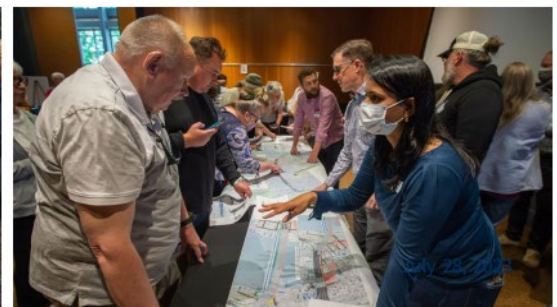
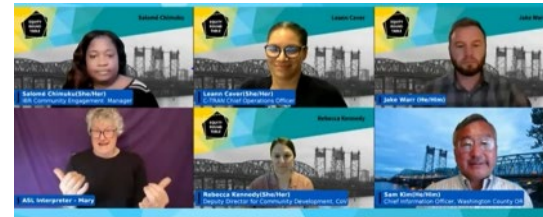
► Program Tours

- WA Transportation Commission
- WA Joint Transportation Committee
- OR and WA State Public Transportation Conference tour

► Congressional Roundtable

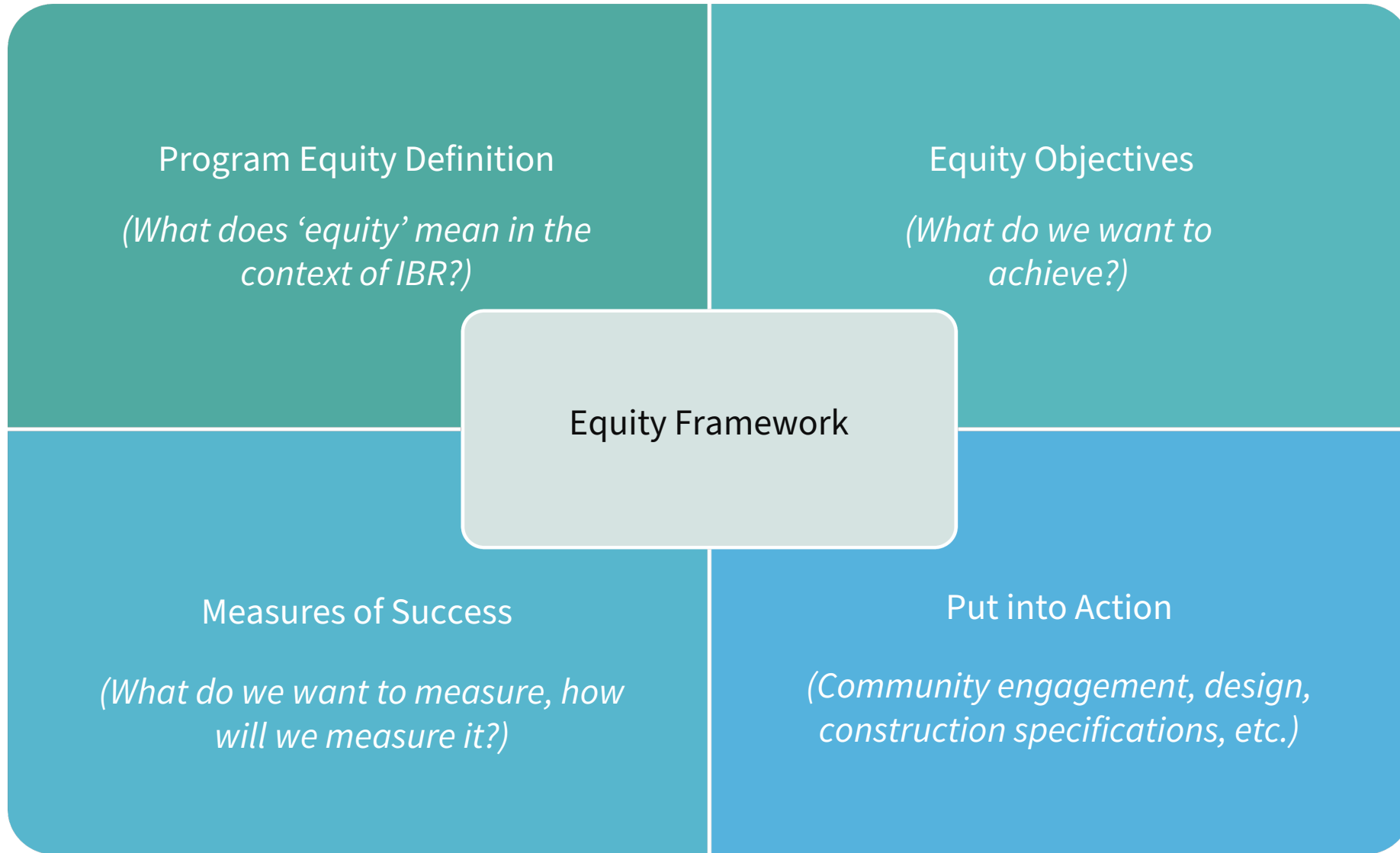
► Recent Presentations:

- Western Bridge Engineers Seminar
- Hazel Dell / Salmon Creek Business Association
- Vancouver Neighborhood Traffic Safety Alliance
- Oregon State Building and Construction Trades
- Clark County Bicycle and Pedestrian Committee
- Oregon State Board of Examiners for Engineering & Land Surveying (OSBEELS)
- Portland Freight Advisory Committee



IBR Community Benefits

Shannon Singleton, IBR Community Benefits Lead



Alignment with IBR Equity Framework

► Community Benefits will be tied to the equity objectives:

Mobility and accessibility: Improve mobility, accessibility, and connectivity, especially for lower income travelers, people with disabilities, and historically underserved communities who experience transportation barriers.

Physical design: Integrate equity, area history, and culture into the physical design elements of the program including bridge aesthetics, artwork, amenities, and impacts to adjacent land uses.

Community benefits: Find opportunities for and implement local community improvements in addition to required mitigations.

Workforce equity and economic opportunity: Ensure that economic opportunities generated by the program benefit minority and women owned firms, BIPOC workers, workers with disabilities, and young people.

Decision-making processes: Prioritize access, influence, and decision-making power for Equity Priority Communities throughout the program in establishing objectives, design, implementation, and evaluation of success.

Avoid further harm: Actively seek out options with a harm-reduction priority rather than simply mitigate disproportionate impacts on historically impacted and underserved communities and populations.

CAG Values & Priorities

- All modes of transportation to increase capacity of river crossing is essential to effectively & safely move more people, goods, & services
- Congestion relief
- Informed, data-driven decision-making
- Bi-State cooperation
- Economic Empowerment
- Transportation facilities must reflect the needs of all ages & abilities, & remove barriers, including language, to access and ensure availability to transportation choices
- Cost effectiveness (affordability & Future planning)
- Centering Equity & avoid further harm
- Cultural & historical heritage & resources protected & honored
- Improve resiliency to global climate change
- Protect natural resources
- Opportunities for meaningful and equitable Community Engagement

Defining Community Benefits on IBR

- ▶ **Expectation that IBR Community Benefits WILL Be:**
 - Developed with extensive community involvement
 - Establishing a range of recommended potential benefits for the local community that reflect:
 - *IBR Equity Framework principles*
 - *Diverse needs and perspectives of community*
 - A key cornerstone of how the program is implementing its commitment to equity
 - Captured in contract specifications, environmental documents, or referred to in future Project Labor (PLA) and/or Community Workforce Agreements (CWA)
 - A cooperative commitment between program partners and other parties

Defining Community Benefits on IBR

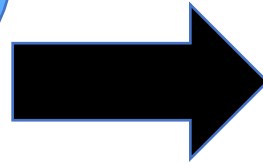
- ▶ **IBR Community Benefits Will NOT Be:**
 - A specific agreement just addressing community benefits
 - A Project Labor Agreement (PLA) or a Community Workforce Agreement (CWA)

Community Benefits Examples

- Construction mitigations
- Development of public/community spaces (parks, trails, access points, etc.)
- Public art opportunities (bridge aesthetics)
- Community centers
- Support for affordable housing development

Examples of CBA Elements that Support PLAs/DBEs/Workforce

- Targeted hiring programs*
- Job training programs*
- Childcare assistance for workers
- Transportation subsidies for workers
- Mentorship programs



Project Labor/Community Workforce Agreement (PLA/CWA) Examples

- Union recognition and employment
- Management's rights
- Working conditions & rules
- Disputes and grievances processes
- Wages and benefits
- Referral requirements
- Apprentices & Trainees (goals & requirements)
- Safety & protections
- Non-discrimination
- Compliance
- Helmets to Hardhats

Sometimes include:

- Targeted hiring
- DBE exemptions
- Mentorship/training
- Committees to promote workforce participation for women and underrepresented communities
- Establishment of Work and Economic Opportunity framework
- DEI training

*Elements that are sometimes included within PLAs/CWAs

CBAG Charter

Community Benefits Advisory Group (CBAG)

- ▶ The purpose lies in the mitigation of impacts the construction of a mega project can have on neighborhoods and businesses in the program area during construction. Another important consideration of these discussions is to ensure the context of this infrastructure investment aligns with the community's future vision. Community Benefits discussions are also rooted in the historical treatment of equity priority communities and therefore, must be aligned with the IBR program's equity principles to ensure equitable processes and outcomes of this effort.
- ▶ Within the scope of the IBR program the CBAG will:
 - Apply the Community Values & Priorities developed by CAG to the CBAG recommendation development process
 - Advise IBR on how to leverage the program's work and partnerships to achieve the greatest positive benefit to the communities in the program area and broader region from the program's work
 - Explore community benefits that align with the program's equity objectives
 - Advise IBR on the establishment of accountability mechanisms for commitments made in the CBAG process

Components of Community Benefits

IBR Community Benefits may include the following categories:

Plans and mitigations already included in the program

Examples: local street improvements, construction mitigations, community connectors, etc.

Program partner conditions

Examples: climate goals and tracking, mitigations for pedestrians and bicycles, etc.

Partner agency contributions

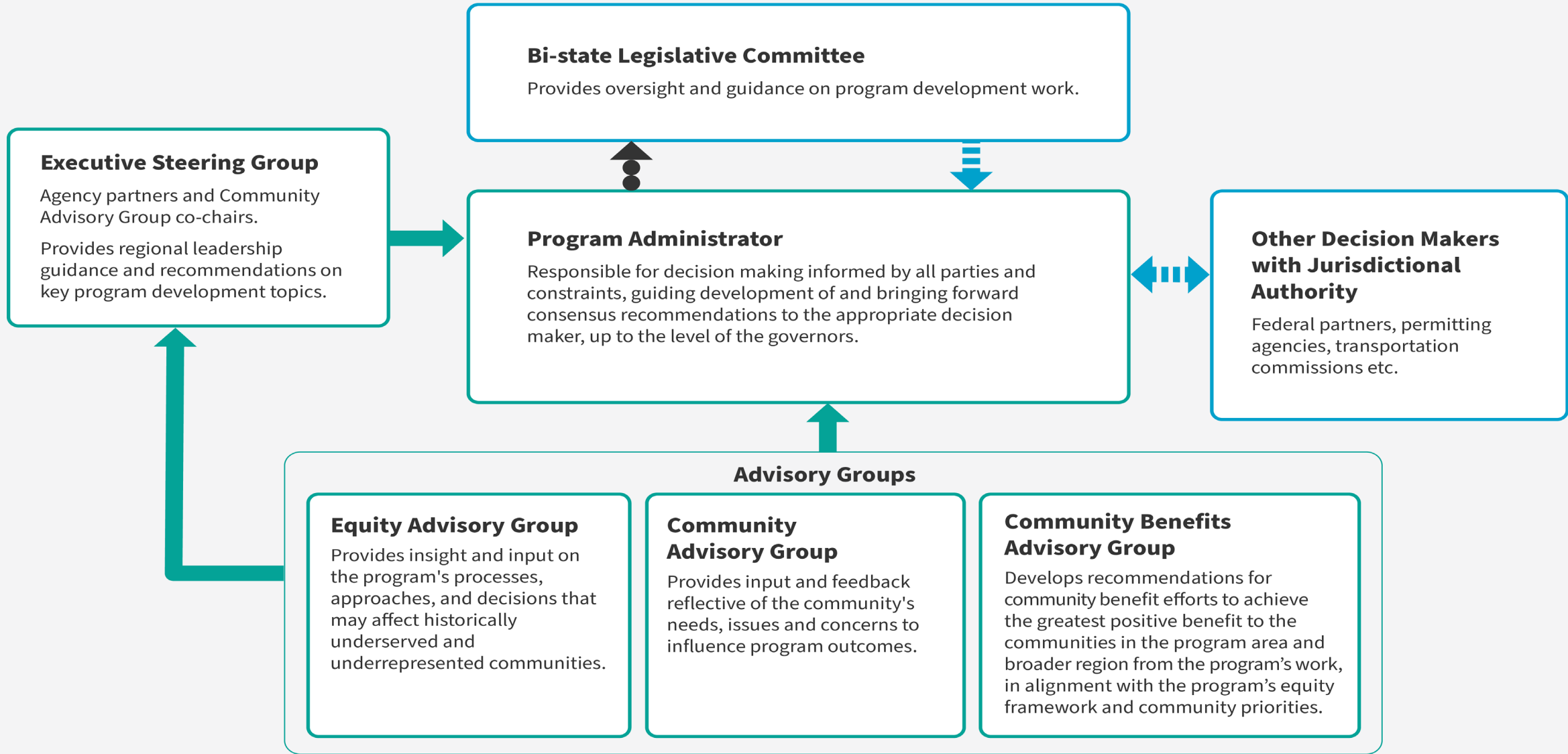
Example: housing development dollars from City of Portland, City of Vancouver, and/or Metro

Additional benefits identified by Community Benefits Advisory Group and the community

Examples: support for workforce (e.g., childcare) and DBEs, community centers, etc.

CBAG Structure

- ▶ **Balanced representation from Oregon and Washington**
- ▶ **Will include representatives from CAG and EAG**
- ▶ **CBAG member representation includes:**
 - Program area residents
 - Program area business owners
 - Workforce development
 - Housing
 - Culturally-specific CBOs and businesses
 - Disability rights
 - Environmental Justice (those advocating for equity in environmental protections)
 - Parks & Recreation



KEY: Recommendations Oversight/Guidance
 Regular briefings on program work and advisory group recommendations

NOTE: Location on graphic does not indicate hierarchy. This diagram is intended as a high-level overview and does not show all engagement points.

Discussion:

What are ways you would like to engage with CBAG?

How can the IBR program best engage the community around the work of the CBAG to create a meaningful impact?



Tolling Update

Meghan Hodges, Community and Government Relations
Manager

Transportation and Tolling Across the U.S.

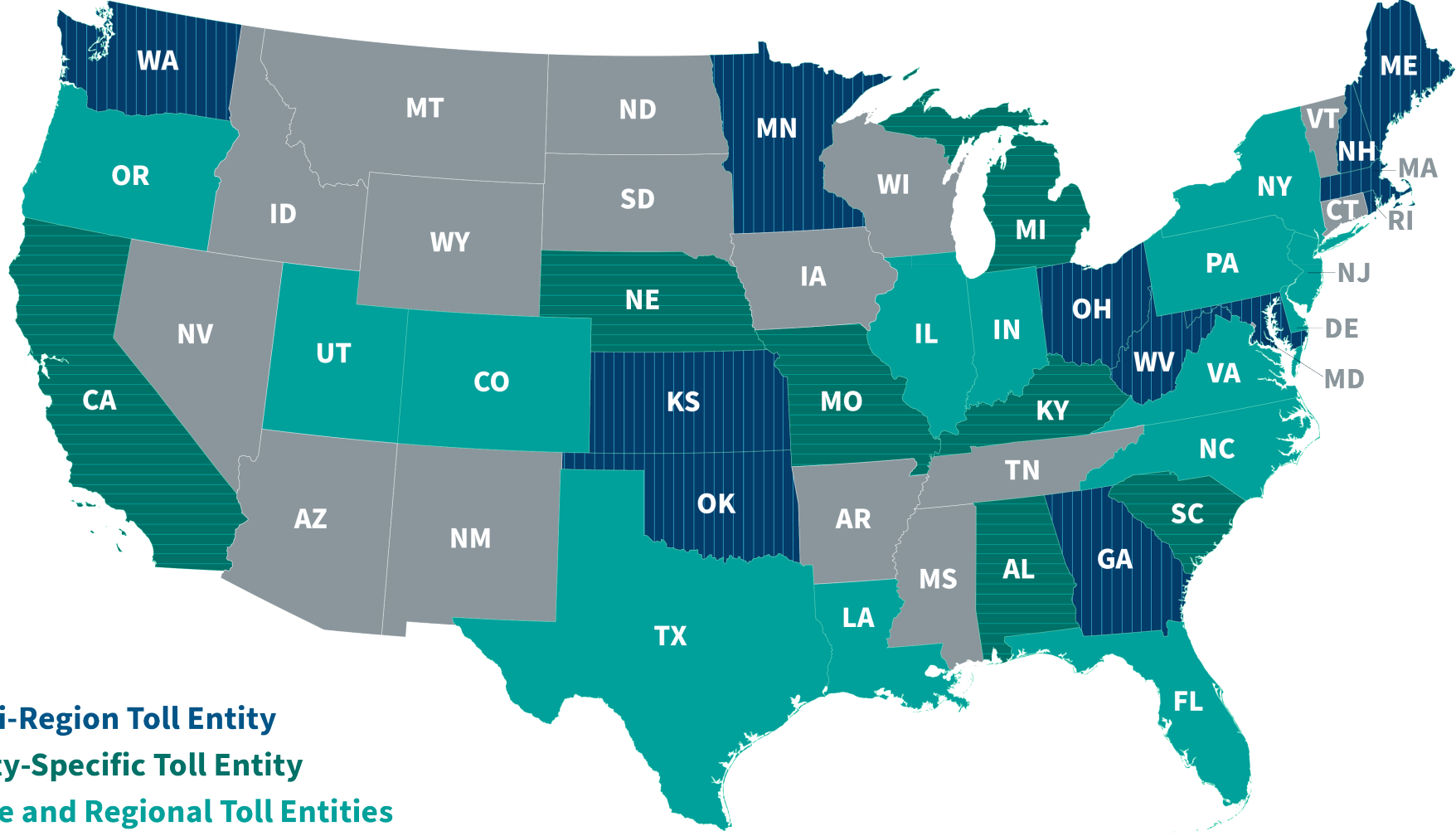
► Transportation Challenges

- Declining gas tax revenues due to increased fuel efficiency
- Increasing construction costs due to inflation
- Limited and increasingly competitive federal funding
- Congestion and travel times experienced by vehicles and freight across the country continues to grow

► Tolling Solutions

- Creates a sustainable transportation funding source for maintenance of the system
- Tolling results in travelers modifying when and how they travel, helping to reduce congestion on the system

Tolling across the US



- Statewide/Multi-Region Toll Entity
- Regional/Facility-Specific Toll Entity
- Mix of Statewide and Regional Toll Entities

IBR Program and Oregon Toll Program

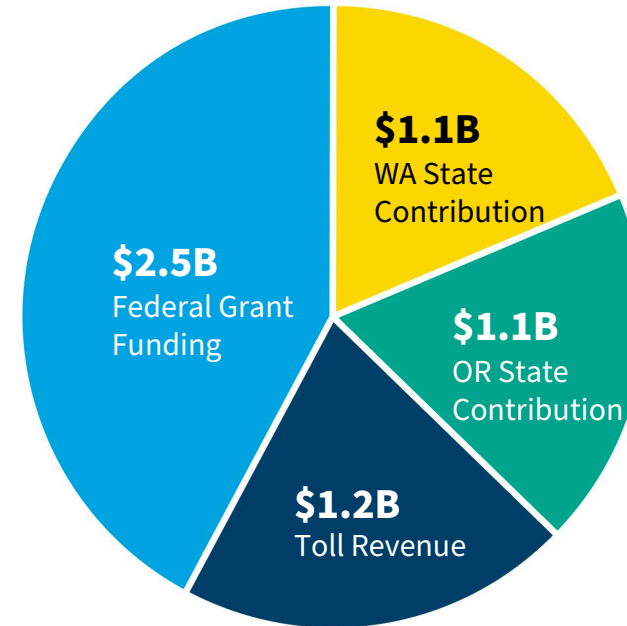
- ▶ These are separate but related efforts that are making investments in the region to:
 - Modernize transportation infrastructure
 - Improve the reliability of the system
- ▶ The earliest tolling will begin in the region is early 2026.
 - Tolling details on regional projects are still being determined.
- ▶ The DOTs will ensure the experience on each tolled facility will be seamless for customers.



IBR Program Funding

- ▶ Federal funds, tolling, and state funds are needed to address the estimated \$6B IBR program cost.
 - Bridge tolls will help pay for the new bridge and its continued operation and maintenance through the duration of the construction loan.
- ▶ Having all non-federal matching funds in place demonstrates regional commitment and increases competitiveness in federal grant applications.

Potential Program Funding Sources



- **WA State Contribution**
\$45M in planning secured; construction funding committed
- **OR State Contribution**
\$55M in planning secured; construction funding committed
- **Federal Grant Funding**
\$1M planning grant secured; pursuing remaining grant amount in 2023
- **Toll Revenue**
Tolling authorized; bonding not yet secured

What will tolling look like?

▶ Electronic tolls

- Without toll booths there is no need for vehicles to stop.

▶ Variable rate tolling

- Time-of-day variable tolling charges a higher price on a set schedule during peak demand.

▶ Timeline

- Tolling is anticipated to start on the existing Interstate Bridge in 2026 after construction of the replacement bridge begins.
- Tolling is expected to shift onto the replacement bridge once it opens to travelers.



Electronic toll gantries on SR520 in Washington

Benefits of Tolling

- ▶ Tolling helps ensure the people who use the system the most, are paying for the benefits they experience.
- ▶ Tolling, combined with the program's multimodal improvements, helps:
 - Improve reliability
 - *Variable rate tolling can shift optional travel away from the busiest times of day or shift trips to different modes of travel.*
 - Improve safety
 - *Reducing congestion, and improving mobility, lowers the number of crashes on the facility.*
 - *Less congestion allows vehicles to return to the freeway system, reducing the number of vehicles diverting to local streets.*
 - Meet state climate goals
 - *Improved traffic flow reduces vehicles idling which is known to contribute to greenhouse gas emissions.*

Tolling Roles and Responsibilities

- ▶ Tolling efforts on IBR will be developed in a bi-state process involving:
 - Oregon and Washington Legislatures
 - *Pass laws authorizing tolling facilities and identifying how toll revenue is spent*
 - Oregon and Washington Transportation Commissions
 - *Sets toll rates and policies*
 - *In Oregon, the Commission determines how toll revenue is spent*
 - Oregon and Washington Departments of Transportation
 - *Implement tolls and policies on state facilities*



Oregon & Washington Commission Coordination

- ▶ During the previous project, the Commissions signed an agreement setting up a bi-state toll sub-committee to recommend rates and policies to the full State Transportation Commissions.
- ▶ The Commissions will jointly determine:
 - Rate-setting
 - *Hours of operation*
 - *Time of day rates & truck multiplier rates*
 - *Escalation*
 - Exemptions and/or Discounts
 - *Low-income toll program, Tribes, emergency vehicles, public transit, vanpool*
- ▶ These topics will be part of ongoing commission discussions with rates and policies being set about 6-8 months before tolling begins.

Engagement and Input

▶ Community Engagement

- The IBR program will work with the Commissions to identify the process for incorporating public, advisory group, and partner agency input around toll rate-setting and policies.

▶ Discounts and Exemptions

- Both commissions have supported the consideration of low-income toll programs on other toll projects and will work together to determine how to approach this on IBR.
 - *Initial toll analysis completed by IBR studied a low-income discount to inform future Commission discussions.*
- For other toll facilities in each state, the commissions are approaching toll policies related to tribes differently.
 - *For tolling on IBR, the WSTC and OTC will work together to reconcile the different approaches in each state.*

Discussion:

What questions do you have?

What information can we bring to future meetings to help you and the community understand tolling better?



IBR Community Engagement

Salomé Chimuku, IBR Community Engagement Team Lead

Community Engagement Update

► Recap of Summer 2023 Tabling:

- Eighteen total events split evenly between Oregon & Washington
- Engaged with more than 1,250 individuals at a diverse range of events
- Approximately 50% of events centered equity priority communities
- Comments heard:
 - *“Thanks for being out here and giving information”*
 - *“I think you are going in the right direction”*
 - *“I wish more programs provided social investments like CBO mini-grants”*
 - *“I like the multimodal investments”*
 - *“I want it to happen but I am skeptical about tolling”*



Community Based Organization Mini Grants

- ▶ These grants provide CBOs with resources to help extend the IBR program's outreach through their networks
- ▶ Eight organizations who work with various equity priority communities were selected with \$50,000 total awarded
 - IBR will work with organizations to:
 - *Distribute information about IBR-related events and meetings on a monthly basis*
 - *Co-host listening sessions, community forums, and community briefings with IBR staff*
 - *Promote IBR events and meetings on their digital and social channels*
 - All eight organizations operate as or are fiscally sponsored by a 501(c)(3)
 - Work with the organizations will help prepare equity priority communities for the release of the Draft SEIS this winter



Opportunity for Public Comment

Comment Instructions

To make a verbal comment:

- ▶ To make a live comment via phone, dial: +1 646 931 3860 or +1 408 638 0968
 - ▶ Meeting ID: 986 0940 5983
 - ▶ Passcode: 701376
- ▶ Dial *9 to raise your hand
- ▶ The facilitator will call on participants to provide comment
- ▶ Dial *6 to unmute yourself
- ▶ Please provide your name and affiliation
- ▶ 10-minute timeframe will be divided among the number of requested speakers

If we run out of time and you have not had a chance to speak, you can still provide comments after the meeting.



Comment Instructions

To submit comments after the meeting:



- ▶ Fill out the comment form on the program website or email your comments to info@interstatebridge.org with “CBAG Public Comment” in the subject line.
- ▶ Call **360-859-0494** (Washington), **503-897-9218** (Oregon), **888-503-6735** (toll-free) and state "CBAG Public Comment" in your message.
- ▶ Written comments need to explicitly say “**CBAG Public Comment**” in the subject line or in the body of the message for them to be identified and distributed to CBAG members.
- ▶ All written comments must be received prior to 48 hours in advance of each upcoming meeting in order to be distributed to advisory group members. Comments received after that point will be distributed to members in advance of their next meeting.





Wrap up

Final Thoughts



Thank you!



October 12, 2023