



# Equity Advisory Group

October 16, 2023

## Closed Captions in English and Spanish

English closed captions are available within Zoom and YouTube.

Users can follow this link to view both English and Spanish captions in a separate browser window:

<https://ibr.news/captions>

## Subtítulos disponible en Inglés y Español

Los subtítulos en Inglés están disponibles en Zoom y YouTube.

Usuarios pueden seguir este enlace para ver los subtítulos en Inglés y Español en una ventana separada del navegador:

<https://ibr.news/captions>

# Reminders

- ▶ We encourage EAG members to turn on your video.
- ▶ Please say your name when you begin to speak.
- ▶ If you experience technical difficulties, please contact program staff at: **(360) 329-6744**

# Public Input Instructions

- ▶ There will be an opportunity to provide brief public input later in the meeting today.
- ▶ To submit input after the meeting:
  - Email comments to [info@interstatebridge.org](mailto:info@interstatebridge.org) with “EAG Public Comment” in the subject line
  - Call 888-503-6735 and state “EAG Public Comment” in your message



# Today's agenda

- ▶ Icebreaker
- ▶ Program Administrator Update
- ▶ Program area tour report out
- ▶ Updates regarding CBO mini-grants
- ▶ Community Benefits Advisory Group overview
- ▶ Equity Framework update & accountability report out + discussion
- ▶ Public comment
- ▶ Close out

# Icebreaker

- ▶ Name + pronouns
- ▶ Affiliation
- ▶ If you had to teach a class on one thing, what would it be?



# Program Update

Greg Johnson, Program Administrator

# Recent Program Updates

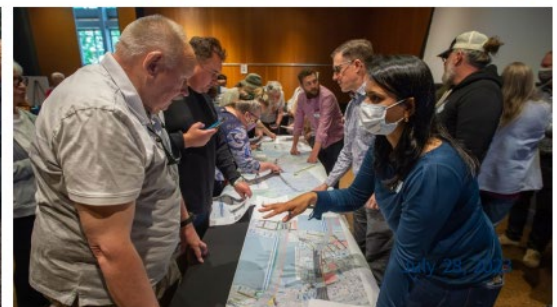
## ► Program Tours

- WA Transportation Commission
- WA Joint Transportation Committee
- OR and WA State Public Transportation Conference tour

## ► Congressional Roundtable

## ► Recent Presentations:

- Western Bridge Engineers Seminar
- Hazel Dell / Salmon Creek Business Association
- Vancouver Neighborhood Traffic Safety Alliance
- Oregon State Building and Construction Trades
- Clark County Bicycle and Pedestrian Committee
- Oregon State Board of Examiners for Engineering & Land Surveying (OSBEELS)
- Portland Freight Advisory Committee







# Program Area Tour

Tour attendees



# IBR Community Engagement

Salomé Chimuku, IBR Community Engagement Team Lead

# Community Engagement Update

## ► Recap of Summer 2023 Tabling:

- Eighteen total events split evenly between Oregon & Washington
- Engaged with more than 1,250 individuals at a diverse range of events
- Approximately 50% of events centered equity priority communities
- Comments heard:
  - *“Thanks for being out here and giving information”*
  - *“I think you are going in the right direction”*
  - *“I wish more programs provided social investments like CBO mini-grants”*
  - *“I like the multimodal investments”*
  - *“I want it to happen but I am skeptical about tolling”*

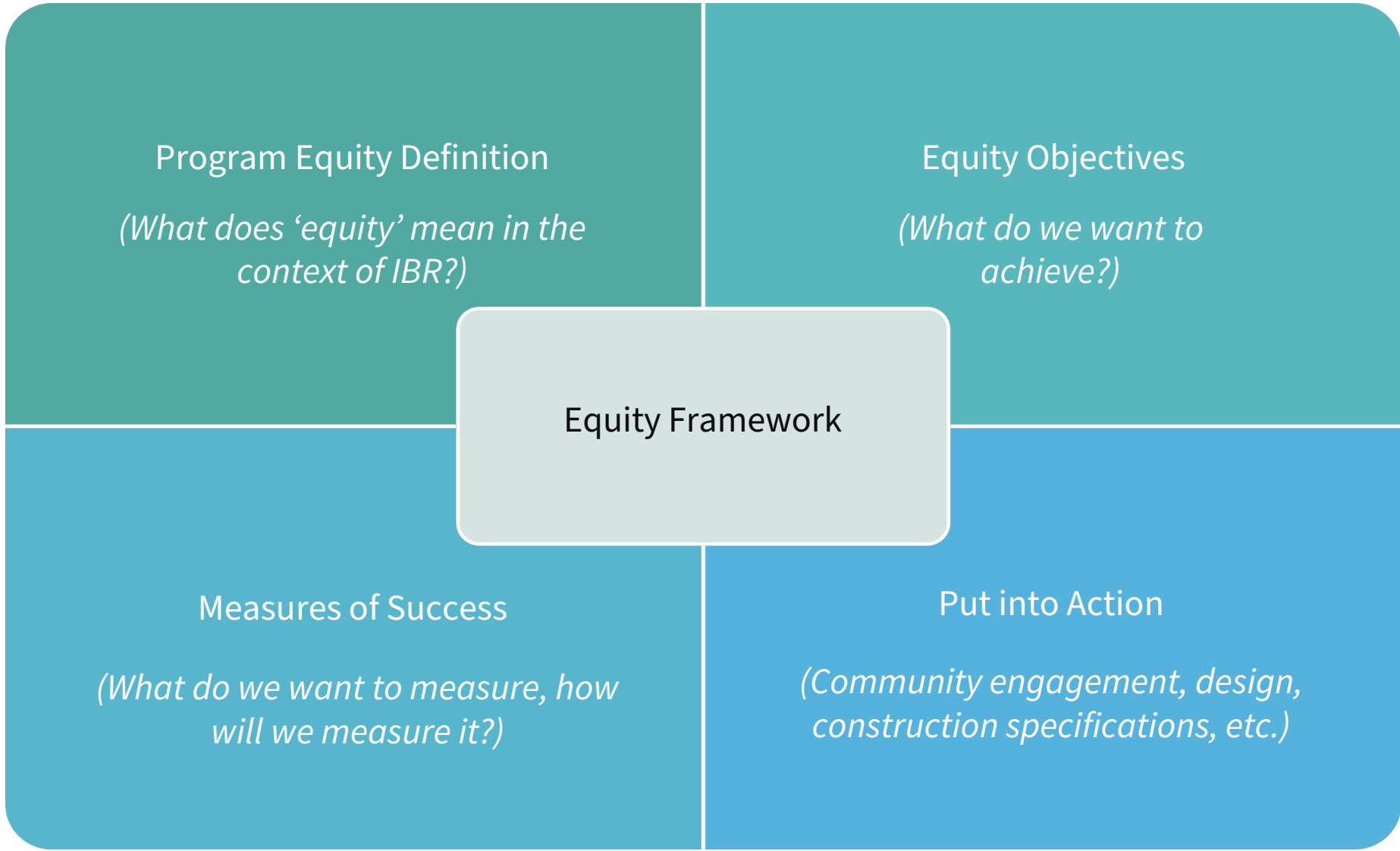


# Community Based Organization Mini Grants

- ▶ These grants provide CBOs with resources to help extend the IBR program's outreach through their networks
- ▶ Eight organizations who work with various equity priority communities were selected with \$50,000 total awarded
  - IBR will work with organizations to:
    - *Distribute information about IBR-related events and meetings on a monthly basis*
    - *Co-host listening sessions, community forums, and community briefings with IBR staff*
    - *Promote IBR events and meetings on their digital and social channels*
  - All eight organizations operate as or are fiscally sponsored by a 501(c)(3)
  - Work with the organizations will help prepare equity priority communities for the release of the Draft SEIS this winter

# IBR Community Benefits

Shannon Singleton, IBR Community Benefits Lead



# Alignment with IBR Equity Framework

## ► Community Benefits will be tied to the equity objectives:

**Mobility and accessibility:** Improve mobility, accessibility, and connectivity, especially for lower income travelers, people with disabilities, and historically underserved communities who experience transportation barriers.

**Physical design:** Integrate equity, area history, and culture into the physical design elements of the program including bridge aesthetics, artwork, amenities, and impacts to adjacent land uses.

**Community benefits:** Find opportunities for and implement local community improvements in addition to required mitigations.

**Workforce equity and economic opportunity:** Ensure that economic opportunities generated by the program benefit minority and women owned firms, BIPOC workers, workers with disabilities, and young people.

**Decision-making processes:** Prioritize access, influence, and decision-making power for Equity Priority Communities throughout the program in establishing objectives, design, implementation, and evaluation of success.

**Avoid further harm:** Actively seek out options with a harm-reduction priority rather than simply mitigate disproportionate impacts on historically impacted and underserved communities and populations.

# CAG Values & Priorities

- All modes of transportation to increase capacity of river crossing is essential to effectively & safely move more people, goods, & services
- Congestion relief
- Informed, data-driven decision-making
- Bi-State cooperation
- Economic Empowerment
- Transportation facilities must reflect the needs of all ages & abilities, & remove barriers, including language, to access and ensure availability to transportation choices
- Cost effectiveness (affordability & Future planning)
- Centering Equity & avoid further harm
- Cultural & historical heritage & resources protected & honored
- Improve resiliency to global climate change
- Protect natural resources
- Opportunities for meaningful and equitable Community Engagement



# Defining Community Benefits on IBR

- ▶ **Expectation that IBR Community Benefits WILL Be:**
  - Developed with extensive community involvement
  - Establishing a range of recommended potential benefits for the local community that reflect:
    - *IBR Equity Framework principles*
    - *Diverse needs and perspectives of community*
  - A key cornerstone of how the program is implementing its commitment to equity
  - Captured in contract specifications, environmental documents, or referred to in future Project Labor (PLA) and/or Community Workforce Agreements (CWA)
  - A cooperative commitment between program partners and other parties

# Defining Community Benefits on IBR

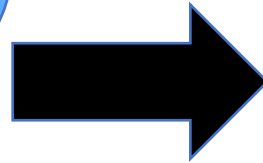
- ▶ **IBR Community Benefits Will NOT Be:**
  - A specific agreement just addressing community benefits
  - A Project Labor Agreement (PLA) or a Community Workforce Agreement (CWA)

## Community Benefits Examples

- Construction mitigations
- Development of public/community spaces (parks, trails, access points, etc.)
- Public art opportunities (bridge aesthetics)
- Community centers
- Support for affordable housing development

## Examples of CBA Elements that Support PLAs/DBEs/Workforce

- Targeted hiring programs\*
- Job training programs\*
- Childcare assistance for workers
- Transportation subsidies for workers
- Mentorship programs



## Project Labor/Community Workforce Agreement (PLA/CWA) Examples

- Union recognition and employment
- Management's rights
- Working conditions & rules
- Disputes and grievances processes
- Wages and benefits
- Referral requirements
- Apprentices & Trainees (goals & requirements)
- Safety & protections
- Non-discrimination
- Compliance
- Helmets to Hardhats

### Sometimes include:

- Targeted hiring
- DBE exemptions
- Mentorship/training
- Committees to promote workforce participation for women and underrepresented communities
- Establishment of Work and Economic Opportunity framework
- DEI training

\*Elements that are sometimes included within PLAs/CWAs

# CBAG Charter

# Community Benefits Advisory Group (CBAG)

- ▶ The purpose lies in the mitigation of impacts the construction of a mega project can have on neighborhoods and businesses in the program area during construction. Another important consideration of these discussions is to ensure the context of this infrastructure investment aligns with the community's future vision. Community Benefits discussions are also rooted in the historical treatment of equity priority communities and therefore, must be aligned with the IBR program's equity principles to ensure equitable processes and outcomes of this effort.
- ▶ Within the scope of the IBR program the CBAG will:
  - Apply the Community Values & Priorities developed by CAG to the CBAG recommendation development process
  - Advise IBR on how to leverage the program's work and partnerships to achieve the greatest positive benefit to the communities in the program area and broader region from the program's work
  - Explore community benefits that align with the program's equity objectives
  - Advise IBR on the establishment of accountability mechanisms for commitments made in the CBAG process

# Components of Community Benefits

IBR Community Benefits may include the following categories:

## **Plans and mitigations already included in the program**

Examples: local street improvements, construction mitigations, community connectors, etc.

## **Program partner conditions**

Examples: climate goals and tracking, mitigations for pedestrians and bicycles, etc.

## **Partner agency contributions**

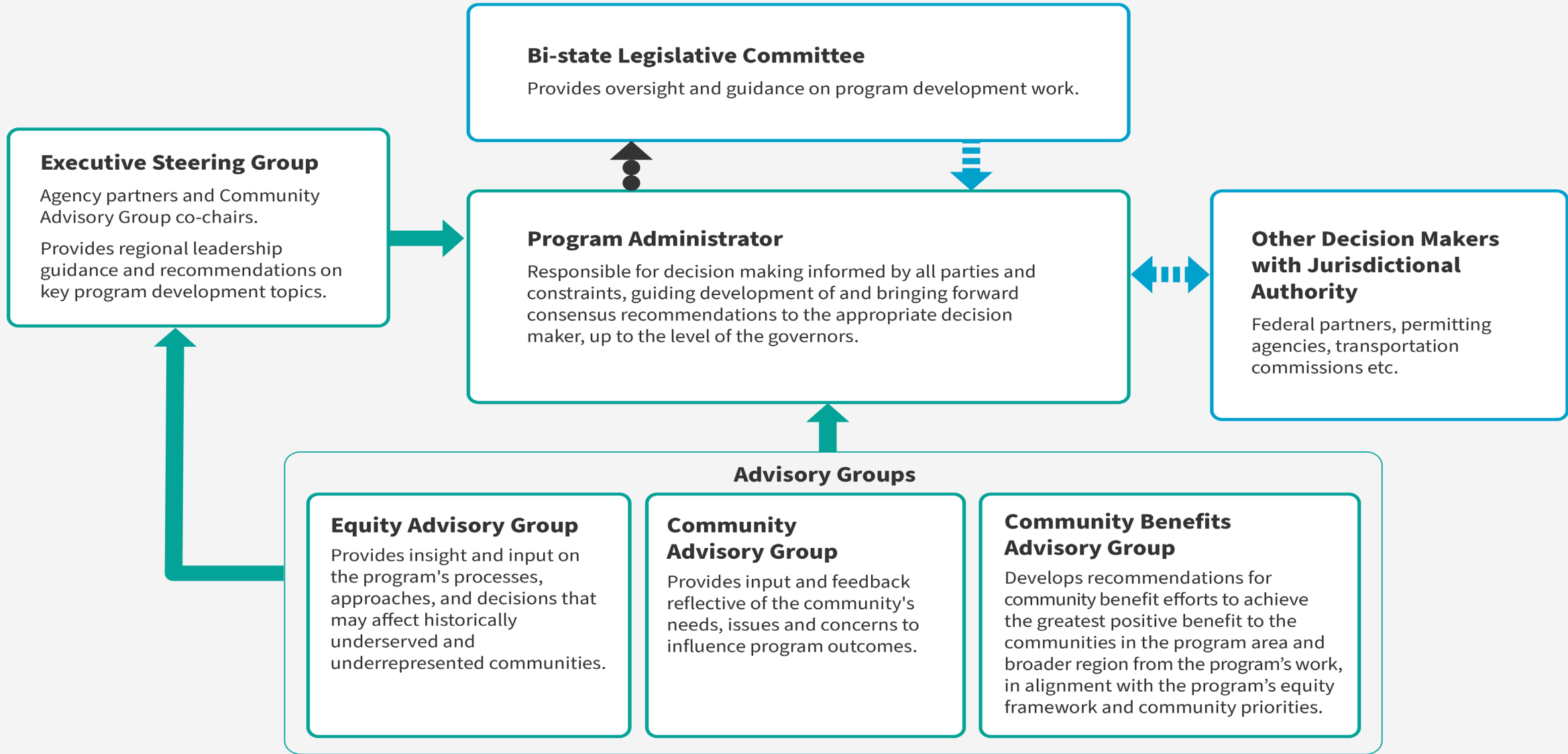
Example: housing development dollars from City of Portland, City of Vancouver, and/or Metro

## **Additional benefits identified by Community Benefits Advisory Group and the community**

Examples: support for workforce (e.g., childcare) and DBEs, community centers, etc.

# CBAG Structure

- ▶ **Balanced representation from Oregon and Washington**
- ▶ **Will include representatives from CAG and EAG**
- ▶ **CBAG member representation includes:**
  - Program area residents
  - Program area business owners
  - Workforce development
  - Housing
  - Culturally-specific CBOs and businesses
  - Disability rights
  - Environmental Justice (those advocating for equity in environmental protections)
  - Parks & Recreation



**KEY:** Recommendations Oversight/Guidance  
 Regular briefings on program work and advisory group recommendations

**NOTE:** Location on graphic does not indicate hierarchy. This diagram is intended as a high-level overview and does not show all engagement points.





# Equity Framework Accountability

Jake Warr, Equity Lead

# Equity Framework Accountability

- ▶ Some key activities over the past 3 months:
  - **Engaged equity priority communities** using various methods and platforms, fairs and festivals, CAG meetings, community briefings, small grants to CBOs, equity roundtables, and office hours.
  - **Equity-centered communications:** Maintained website ADA accessibility and translation (8 languages besides English), provided ASL interpretation and Spanish/English closed captioning at all public meetings, provided accessible and culturally-responsive program information in multiple media formats and languages, posted equity-related content to social media.

# Equity Framework Accountability

- ▶ Some key activities over the past 3 months:
  - Developed **DBE plan** to help meet the General Engineering Consultant's aspirational goal over and above the mandatory DBE participation goal, which includes efforts to engage with and build capacity of women and minority owned firms to participate on the program.
  - As part of the Draft SEIS, Environmental, Transportation, and Equity teams collaborated to analyze the MLPA's potential **benefits and impacts** to equity priority communities.

# Equity Framework Accountability

- ▶ Some key activities over the past 3 months:
  - Launched the internal **Equity and Climate Council** to build internal capacity and coordinate implementation of the Equity Framework across all program teams.
  - Initiated the **Community Benefits Advisory Group**, which will develop recommendations for community benefit efforts to achieve the greatest positive benefit to the communities in the program area and broader region from the program's work.

# Equity Framework Accountability

- ▶ How does this report out align with your expectations regarding Equity Framework implementation?
- ▶ Are there areas of the program you would like more information about in terms of equity efforts?
- ▶ What recommendations do you have for the program to continue to integrate the Framework throughout all activities and decisions?

# Public Comment

# Comment Instructions

- ▶ Through Zoom:
  - ▶ Please use the link located in the meeting description on the YouTube meeting page or on the IBR EAG meeting webpage.
  - ▶ Commenters will be allowed to turn on their webcams, but will not be allowed to share their screens and will be removed from the room once the public comment period concludes.
- ▶ By phone:
  - ▶ Dial 253-215-8782
  - ▶ Meeting ID: 986 0940 5983
  - ▶ Passcode: 701376
  - ▶ Dial \*9 to raise your hand
  - ▶ Dial \*6 to unmute yourself
- ▶ The facilitator will call on participants to provide comment
- ▶ Please provide your name and affiliation.
- ▶ Commenters will be given 2 minutes to speak.



or



# Comment Instructions

## To submit comment after the meeting:



- ▶ Fill out the comment form on the program website or email your comments to [info@interstatebridge.org](mailto:info@interstatebridge.org) with “**EAG Public Comment**” in the subject line.



- ▶ Call **888-503-6735** and state “EAG Public Comment” in your message.
- ▶ All written comments must be received prior to 48 hours in advance of each upcoming meeting in order to be distributed to advisory group members. Comments received after that point will be distributed to members in advance of their next meeting.



# Wrap up

- Takeaways
- Meeting evaluation
- Next meeting: November 20, 5:30 – 7:30pm