



Equity Advisory Group

August 21, 2023

Closed Captions in English and Spanish

English closed captions are available within Zoom and YouTube.

Users can follow this link to view both English and Spanish captions in a separate browser window:

<https://ibr.news/captions>

Subtítulos disponible en Inglés y Español

Los subtítulos en Inglés están disponibles en Zoom y YouTube.

Usuarios pueden seguir este enlace para ver los subtítulos en Inglés y Español en una ventana separada del navegador:

<https://ibr.news/captions>

Reminders

- ▶ We encourage EAG members to turn on your video.
- ▶ Please say your name when you begin to speak.
- ▶ If you experience technical difficulties, please contact program staff at: **(360) 329-6744**

Public Input Instructions

- ▶ There will be an opportunity to provide brief public input later in the meeting today.
- ▶ To submit input after the meeting:
 - Email comments to info@interstatebridge.org with “EAG Public Comment” in the subject line
 - Call 888-503-6735 and state “EAG Public Comment” in your message



Today's agenda

- ▶ Icebreaker
- ▶ Program Administrator Update
- ▶ Letter of Support for Federal Grants
- ▶ Program Design: Bridge + Washington Side
- ▶ Public comment
- ▶ Close out

Icebreaker

- ▶ Name + pronouns
- ▶ Affiliation
- ▶ What is your favorite park in the Portland-Vancouver area?





Program Update

Greg Johnson, Program Administrator

Recent Program Updates

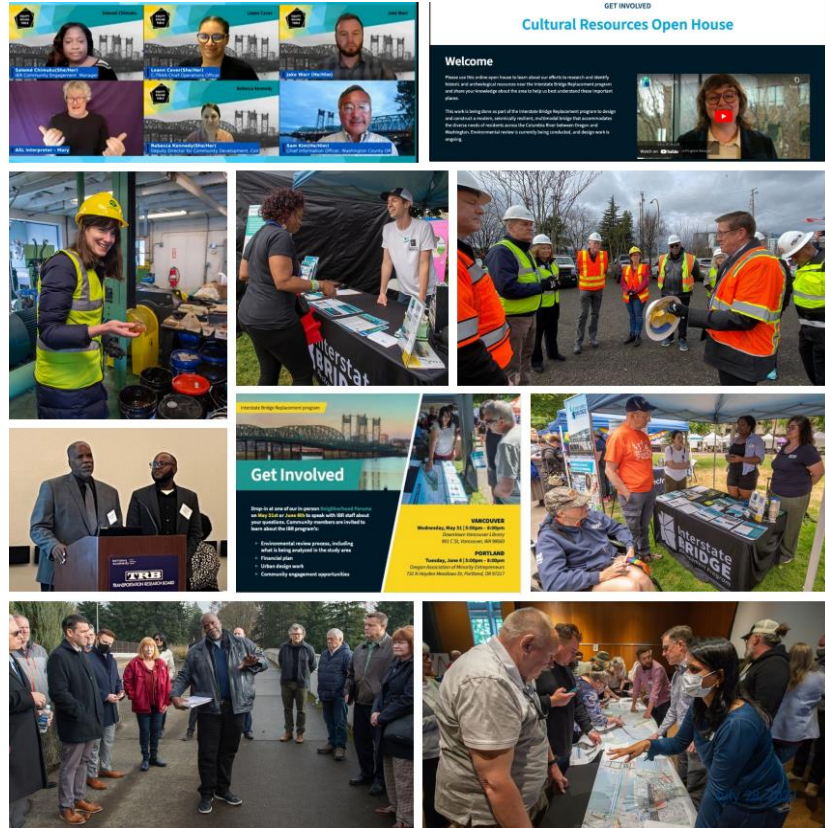
► Bi-State Legislative Committee

► Recent Presentations and Events:

- WSTC
- CREDC Downtown Stakeholders
- Washington County Transportation Task Force
- Vancouver Transportation & Mobility Commission
- Lower Columbia River Harbor Safety Committee
- Institute of Transportation Engineers Annual Meeting
- Oregon Trucking Association Annual Convention
- Neighborhood Association Meetings
- Tours (media, elected officials, Washington State Transit Association)
- Tabling at community summer events

► Office Hours have launched!

► CBO Mini Grants – Applications open until September 10



Infrastructure grant letters of support (closing the loop)

Jake Warr

Program design: Bridge + Washington side

Casey Liles, Delivery Manager

Shilpa Mallem, Design Manager

Modified LPA and Design Options

► Modified LPA

- Improve active transportation facilities and connections
- Extend LRT from Expo to Evergreen Blvd and provide bus on shoulder
- Add three new LRT stations and up to two Park & Rides
- Replace bridges over Columbia River and North Portland Harbor
- Modify seven I-5 interchanges
- Three through lanes and one auxiliary lane in each direction

► Design Options

- Configurations of the Columbia River bridges
 - *Movable Span; Single Level; Double Deck/Stacked*
- C Street ramps to/from I-5
- Operations and safety
 - *One auxiliary lane*
 - *Two auxiliary lanes*
- Park & Ride locations at Waterfront and Evergreen Transit Stations

What We Heard in June

- ▶ Need more understanding/discussion before we zoom in to the individual user perspective.
 - What are the issues we are trying to solve for?
- ▶ Want to understand how the Equity Framework is being applied.
 - How is the program assessing design options through an equity lens?
- ▶ How are we considering those who already live within the project footprint vs. those who are to come (after the bridge is complete)?

What We Heard Last Meeting

- ▶ Appreciate responsiveness to previous feedback by taking a step back and explaining how the Equity Framework is applying to the work being done around design.
- ▶ We feel this approach to explaining the work reflects meeting us where we are at.
 - We would like to see more of this approach as we continue discussing design and other program work.

Looking southeast from the Vancouver side of the Interstate Bridge



Looking west on E 33rd St in Vancouver



Looking west on E 29th St in Vancouver



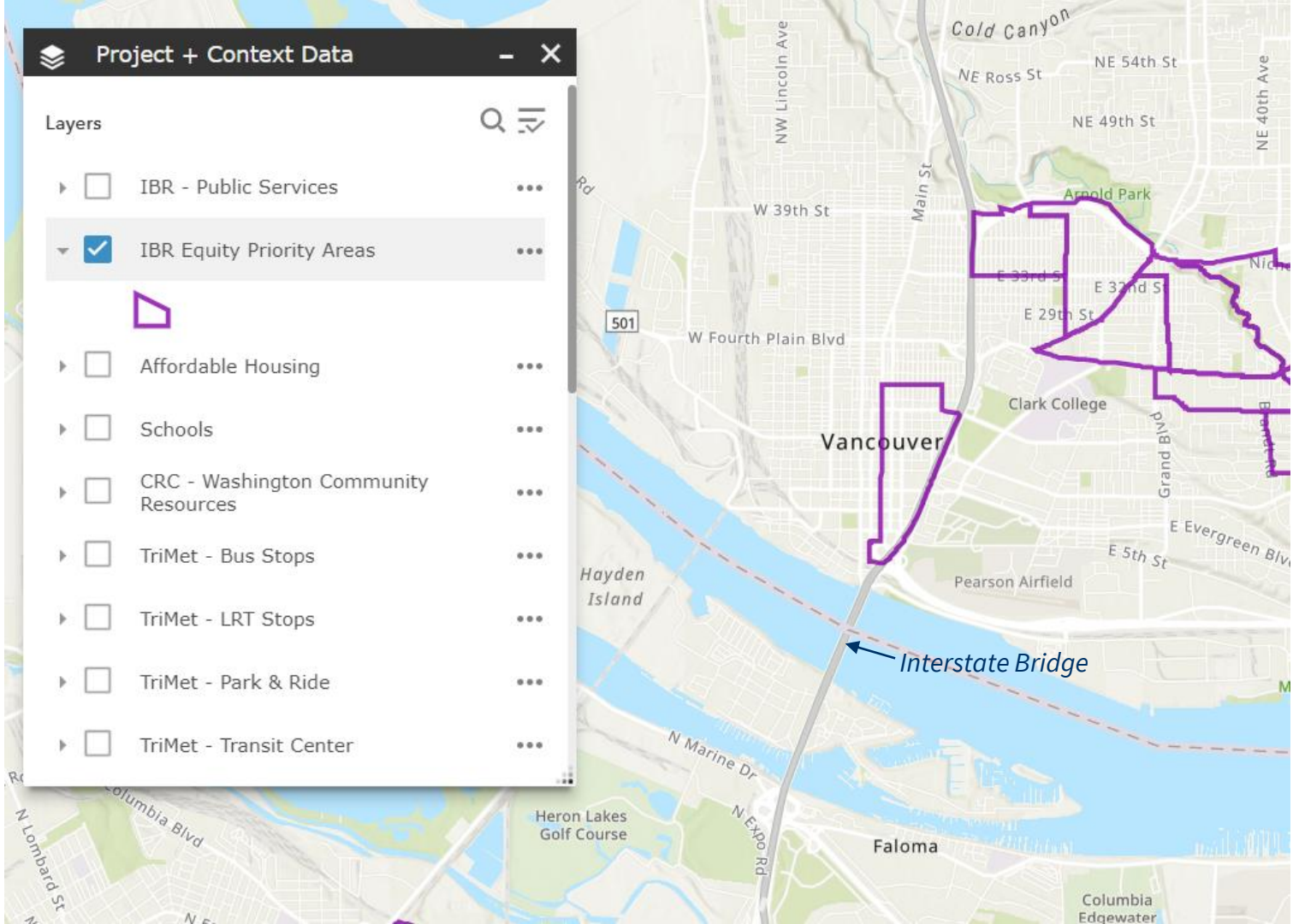
*Buses get stuck in the same
congestion as other vehicles*



Project + Context Data - X

Layers

- ▶ IBR - Public Services ...
- ▼ IBR Equity Priority Areas ...
- ▶ Affordable Housing ...
- ▶ Schools ...
- ▶ CRC - Washington Community Resources ...
- ▶ TriMet - Bus Stops ...
- ▶ TriMet - LRT Stops ...
- ▶ TriMet - Park & Ride ...
- ▶ TriMet - Transit Center ...



Area demographics

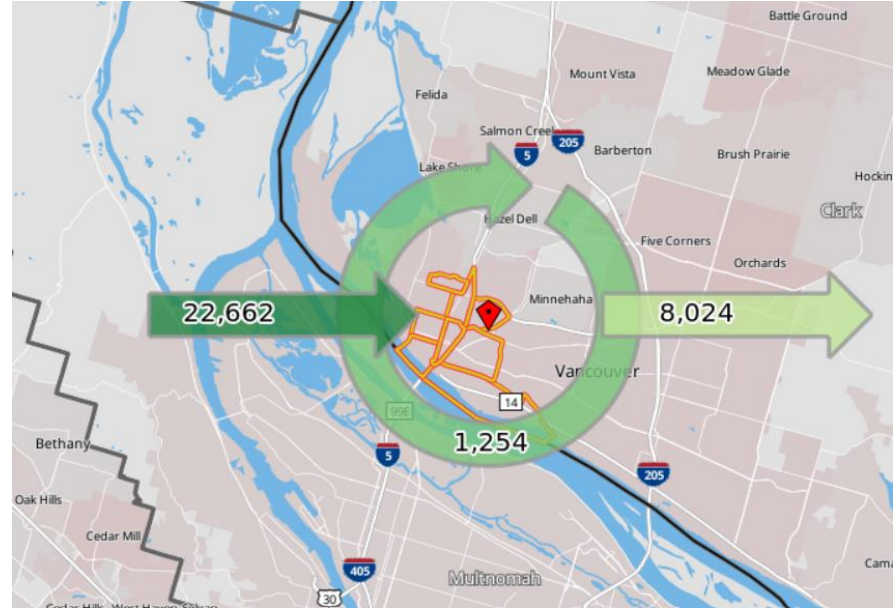
2017-2021 American Community Survey

Demographic	Washington side of IBR program area census tracts (“focus area”)	Comparison to Portland-Vancouver Metro Area
Race	29% BIPOC	Lower share is BIPOC in focus area
Age	16% are 65+	Similar
Income	35% low-income (less than 2x the federal poverty level)	Greater share of focus area residents are low-income
Disability	19% live with a disability	Greater share of people with disabilities in focus area
Housing	41% own, 60% rent	Greater share of renters in focus area
Transportation to work	74% drive, 19% work from home, 5% take transit, 3% walk, almost no one bikes	Greater share of focus area commuters drive
Vehicles available	14% of households do <u>not</u> have a vehicle	Greater share of households do <u>not</u> have a vehicle in focus area

Job flows

US Census OnTheMap (2020)

- ▶ About 23,000 area workers live somewhere else
- ▶ About 8,000 area residents work somewhere else
- ▶ About 1,300 workers live and work in the area



Q&A and Discussion

Public Comment

Comment Instructions

- ▶ Through Zoom:
 - ▶ Please use the link located in the meeting description on the YouTube meeting page or on the IBR EAG meeting webpage.
 - ▶ Commenters will be allowed to turn on their webcams, but will not be allowed to share their screens and will be removed from the room once the public comment period concludes.
- ▶ By phone:
 - ▶ Dial 253-215-8782
 - ▶ Meeting ID: 986 0940 5983
 - ▶ Passcode: 701376
 - ▶ Dial *9 to raise your hand
 - ▶ Dial *6 to unmute yourself
- ▶ The facilitator will call on participants to provide comment
- ▶ Please provide your name and affiliation.
- ▶ Commenters will be given 2 minutes to speak.



or



Comment Instructions

To submit comment after the meeting:



- ▶ Fill out the comment form on the program website or email your comments to info@interstatebridge.org with “**EAG Public Comment**” in the subject line.



- ▶ Call **888-503-6735** and state “EAG Public Comment” in your message.
- ▶ All written comments must be received prior to 48 hours in advance of each upcoming meeting in order to be distributed to advisory group members. Comments received after that point will be distributed to members in advance of their next meeting.

Wrap up

- Takeaways
- Meeting evaluation
- Next meeting: September 18, 5:30 – 7:30pm