



Equity Advisory Group

April 19, 2021

Closed Captions in English and Spanish

English closed captions are available within Zoom and YouTube.

Users can follow this link to view both English and Spanish captions in a separate browser window:

<https://ibr.news/captions>

Subtítulos disponible en Inglés y Español

Los subtítulos en Inglés están disponibles en YouTube.

Usuarios pueden seguir este enlace para ver los subtítulos en Inglés y Español en una ventana separada del navegador:

<https://ibr.news/captions>

How to access closed captions



1. At the bottom middle of your screen you should see a menu of options. If you can't see the menu, hover your mouse over the bottom middle of the screen.
2. Then click on the “CC” icon and a separate window with captions will appear.

Public Input Instructions

- ▶ There will be an opportunity to provide brief public input later in the meeting today.
- ▶ To submit input after the meeting:
 - Email comments to info@interstatebridge.org with “EAG Public Comment” in the subject line
 - Call 888-503-6735 and state “EAG Public Comment” in your message



Today's agenda

- ▶ Program Administrator update
- ▶ EAG workplan status
- ▶ Review & discuss updated draft definition of Equity
- ▶ Review updated Equity Objectives
- ▶ Continue discussion on measuring success (performance measures)
- ▶ Public comment
- ▶ Wrap up

Program Administrator Update

Four Environmental Process Pathways

▶ Step 1: Re-evaluation

Determine whether

- a) the previous NEPA decision, analysis, and documentation are still valid, OR
- b) additional analysis is required to advance the project.

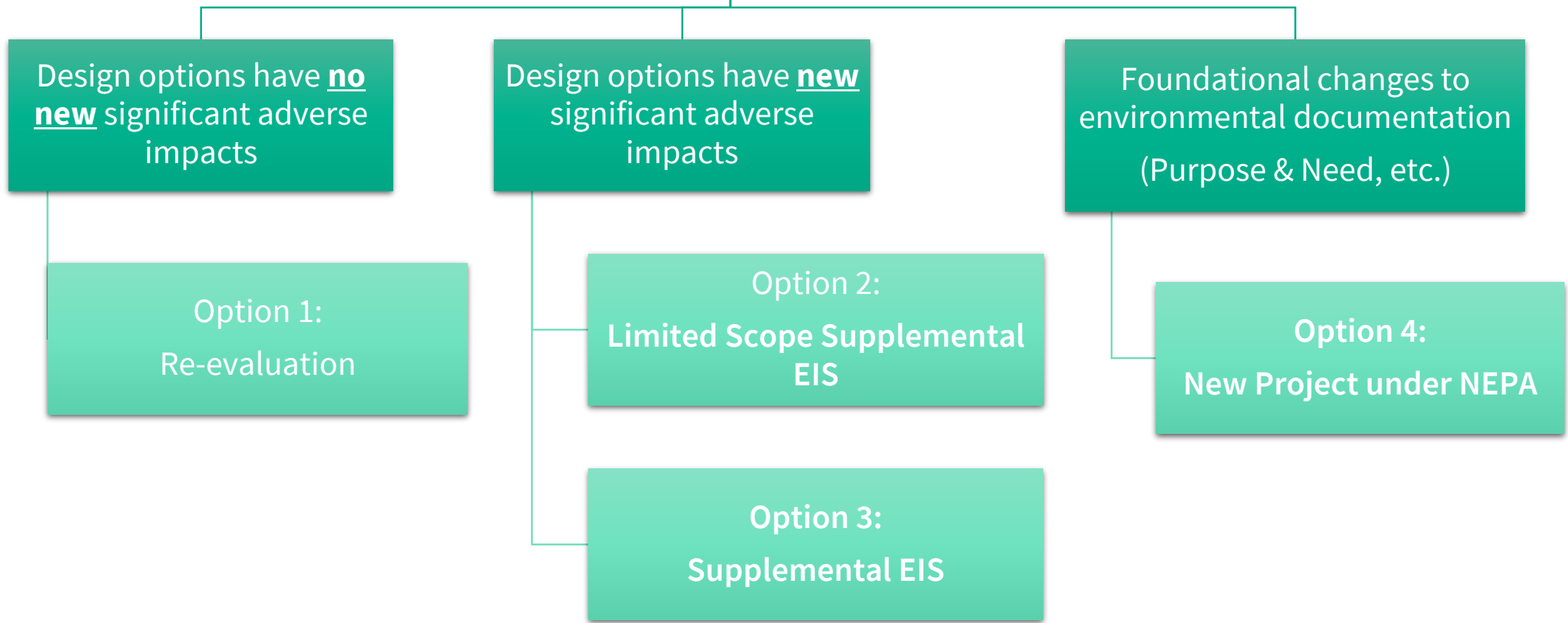
– *If additional analysis is required, a re-evaluation helps identify what level of analysis is needed.*

▶ Step 2: 1 of 4 pathways

- Option 1: Re-evaluation only
- Option 2: A limited scope supplemental EIS
- Option 3: A supplemental EIS
- Option 4: Rescind the 2011 Record of Decision and restart the NEPA process.

We are here →

Re-evaluation of previous environmental work



EAG Workplan

Where we are, where we're going

Program timeline refresher



Program Equity Definition
(What does 'equity' mean in the context of IBR?)

Equity Objectives
(What do we want to achieve?)

Equity Framework

Measures of Success
(What do we want to measure, how will we measure it?)

Put into action
(Community engagement, design, construction specifications, etc.)

EAG Workplan (April – August 2021)



- ▶ Refine & recommend program **Equity Definition**
- ▶ Refine overarching **Equity Objectives**
- ▶ Develop and recommend **performance measures** (measures of success)
- ▶ Provide **design recommendations** & feedback based on definition, objectives
- ▶ Inform **screening criteria** (how we evaluate design options)

Equity Definition Update

Changes since last version

What's the same:

- ▶ Defined in terms of both Process & Outcomes
- ▶ Economic and transportation benefits are the core outcome

What's new:

- ▶ Separate equity definition and equity commitment (to be refined)
- ▶ Revamped definition of “Process Equity”
- ▶ Defines “marginalized and underserved communities”
- ▶ “Together, Process Equity and Outcome Equity contribute to addressing the impacts of and removing long standing injustices experienced by these communities.”

Updated draft definition, pt. 1

The Interstate Bridge Replacement program defines equity in terms of both process and outcomes.

Process Equity means that the program prioritizes access, influence, and decision-making power for marginalized and underserved communities throughout the program in establishing objectives, design, implementation, and evaluation of success.

Outcome Equity is the result of successful Process Equity and is demonstrated by tangible transportation and economic benefits for marginalized and underserved communities.

Updated draft definition, pt. 2

Marginalized and underserved communities are defined as those who experience and/or have experienced discrimination and exclusion based on identity, such as:

- BIPOC (Black, Indigenous, and People of Color)
- People with disabilities
- Communities with limited English proficiency (LEP)
- Persons with lower income
- Houseless individuals and families
- Immigrants and refugees
- Young people
- Older adults

Together, Process Equity and Outcome Equity contribute to addressing the impacts of and removing long standing injustices experienced by these communities.



Discussion

- ▶ Is this definition consistent with the equity direction we'd like to see in the IBR program?

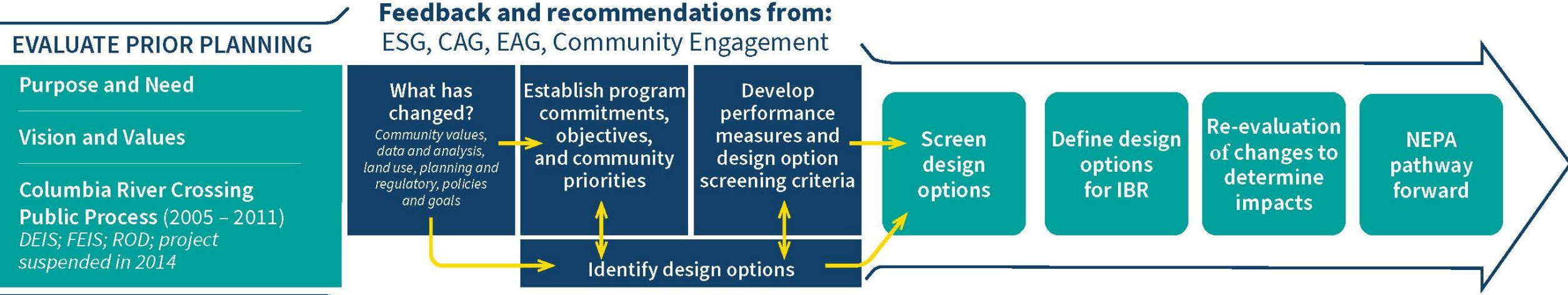


Vote

Do you support recommending this definition to the IBR Program Administrator?

Performance Measures & Equity Objectives

Process to Update Environmental Documentation



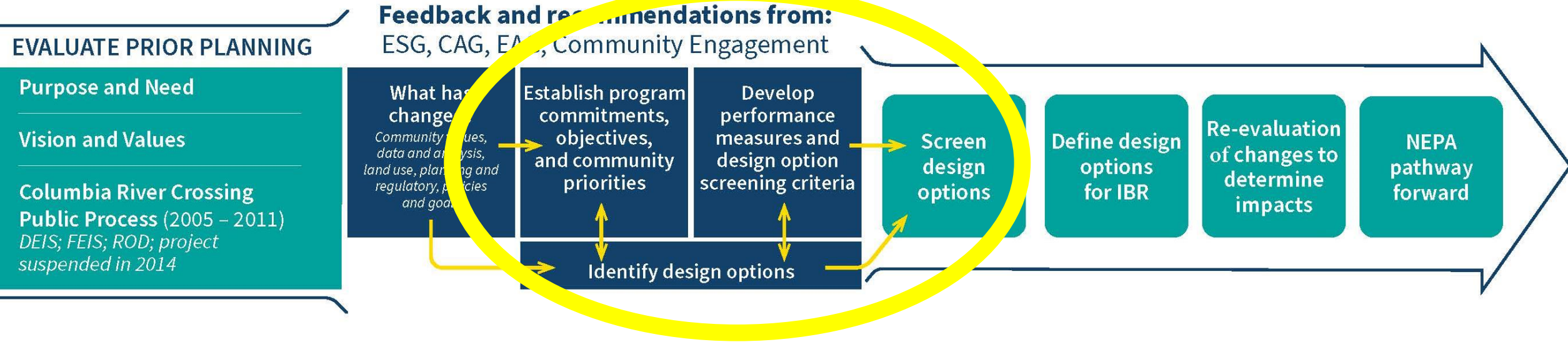
CAG: Community Advisory Group
DEIS: Draft Environmental Impact Statement

EAG: Equity Advisory Group
ESG: Executive Steering Group

FEIS: Final Environmental Impact Statement
NEPA: National Environmental Policy Act

ROD: Record of Decision

Process to Update Environmental Documentation



CAG: Community Advisory Group
DEIS: Draft Environmental Impact Statement

EAG: Equity Advisory Group
ESG: Executive Steering Group

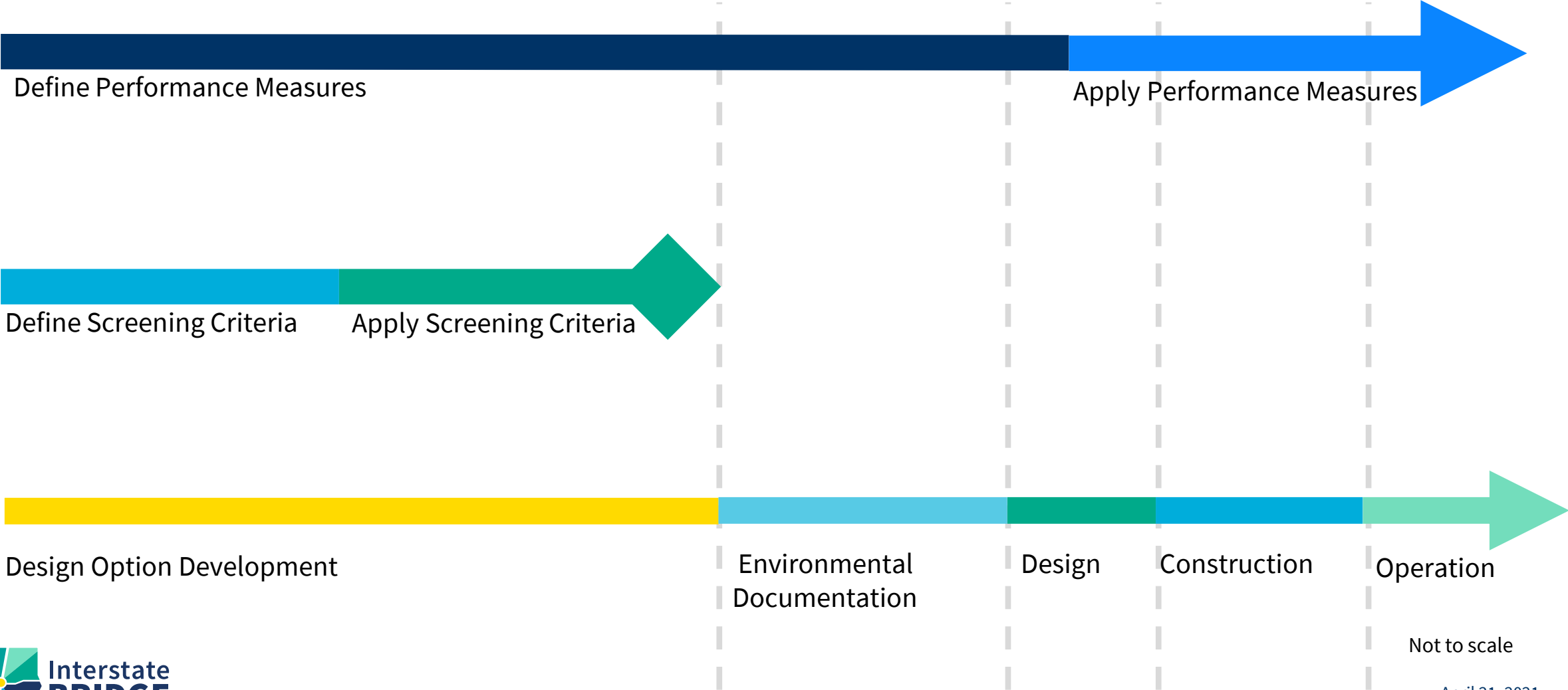
FEIS: Final Environmental Impact Statement
NEPA: National Environmental Policy Act

ROD: Record of Decision

Performance Measures vs. Screening Criteria

- ▶ *Program-level performance measures* are indicators that will be used to measure the IBR program's success over the lifespan of the program.
- ▶ *Screening criteria* are used to assess the level of performance or potential impacts among the design options considered.

Performance Measure/Screening Criteria Development and Application Timeline



Not to scale

April 21, 2021

Draft Equity Objectives

Mobility & Accessibility

Improve mobility, accessibility, and connectivity in the program area, with a particular focus on the needs of lower income travelers, people with disabilities, and communities who experience transportation barriers related to the location of affordable housing options.

Physical Design

Integrate equity into the physical design elements of the program.

Community Benefits

Find opportunities for and implement local community improvements, in addition to required mitigations.

Economic opportunity

Ensure that economic opportunities generated by the program, including contracting and workforce development, substantially benefit minority and women owned firms, workers of color, workers with disabilities, and young people.

Decision-making processes

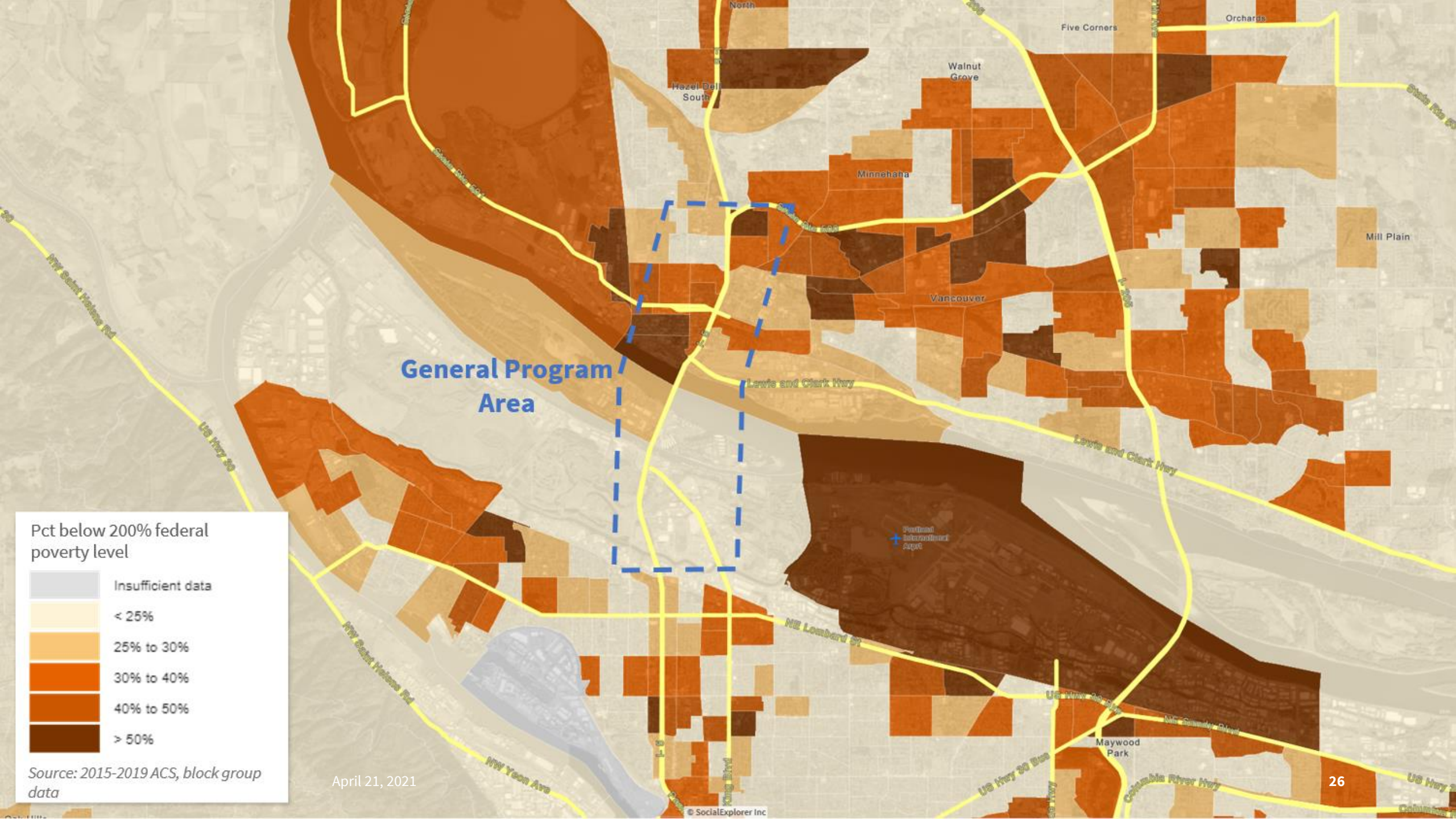
Meaningfully share access, participation, influence, and decision-making power with historically marginalized communities throughout the course of the program.

Avoiding further harm

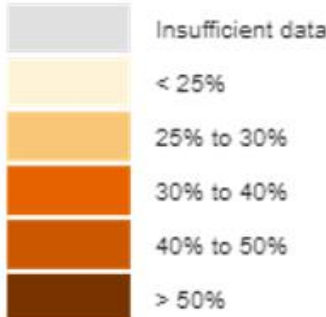
Avoid disproportionate impacts on communities of concern while implementing substantial mitigations for any unavoidable, but proportional, impacts.

Example

Objective category	Performance measure (concept)
Mobility & Accessibility	Proximity of transit station locations to areas with high concentrations of low-income households



Pct below 200% federal poverty level



Source: 2015-2019 ACS, block group data

April 21, 2021



Small group discussions

- ▶ To discuss regarding each of the two objective categories your group is assigned:
 1. What **outcomes** do we want to see under this category?
 2. What potential **performance measures** come to mind that would tell us how successful we've been in achieving the objective?

Small Group Discussion

The EAG members are in breakout rooms. They will return to this webinar momentarily

If you would like to participate in an interactive activity, go to menti.com and enter the code 8167 4122

Public comment

Comment Instructions

To make a verbal comment:

- ▶ To make a live comment via phone, dial: +1 669 900 6833 or +1 408 638 0968
 - ▶ Meeting ID: 986 0940 5983
 - ▶ Passcode: 701376
- ▶ Dial *9 to raise your hand
- ▶ The facilitator will call on participants to provide comment
- ▶ Dial *6 to unmute yourself
- ▶ Please provide your name and affiliation.
- ▶ 10-minute timeframe will be divided among the number of requested speakers.

If we run out of time and you have not had a chance to speak, you can still provide comments after the meeting.



Comment Instructions

To submit comment after the meeting:



- ▶ Fill out the comment form on the program website or email your comments to info@interstatebridge.org with “EAG Public Comment” in the subject line.



- ▶ Call **360-859-0494** (Washington), **503-897-9218** (Oregon), **888-503-6735** (toll-free) and state “EAG Public Comment” in your message.
- ▶ Written comments need to explicitly say “**EAG Public Comment**” in the subject line or in the body of the message for them to be identified and distributed to EAG members.
- ▶ All written comments must be received prior to 48 hours in advance of each upcoming meeting in order to be distributed to advisory group members. Comments received after that point will be distributed to members in advance of their next meeting.

Wrap up

- Takeaways
- Next meeting: Monday May 17, 5:30 – 7:30 p.m.



Thank you!