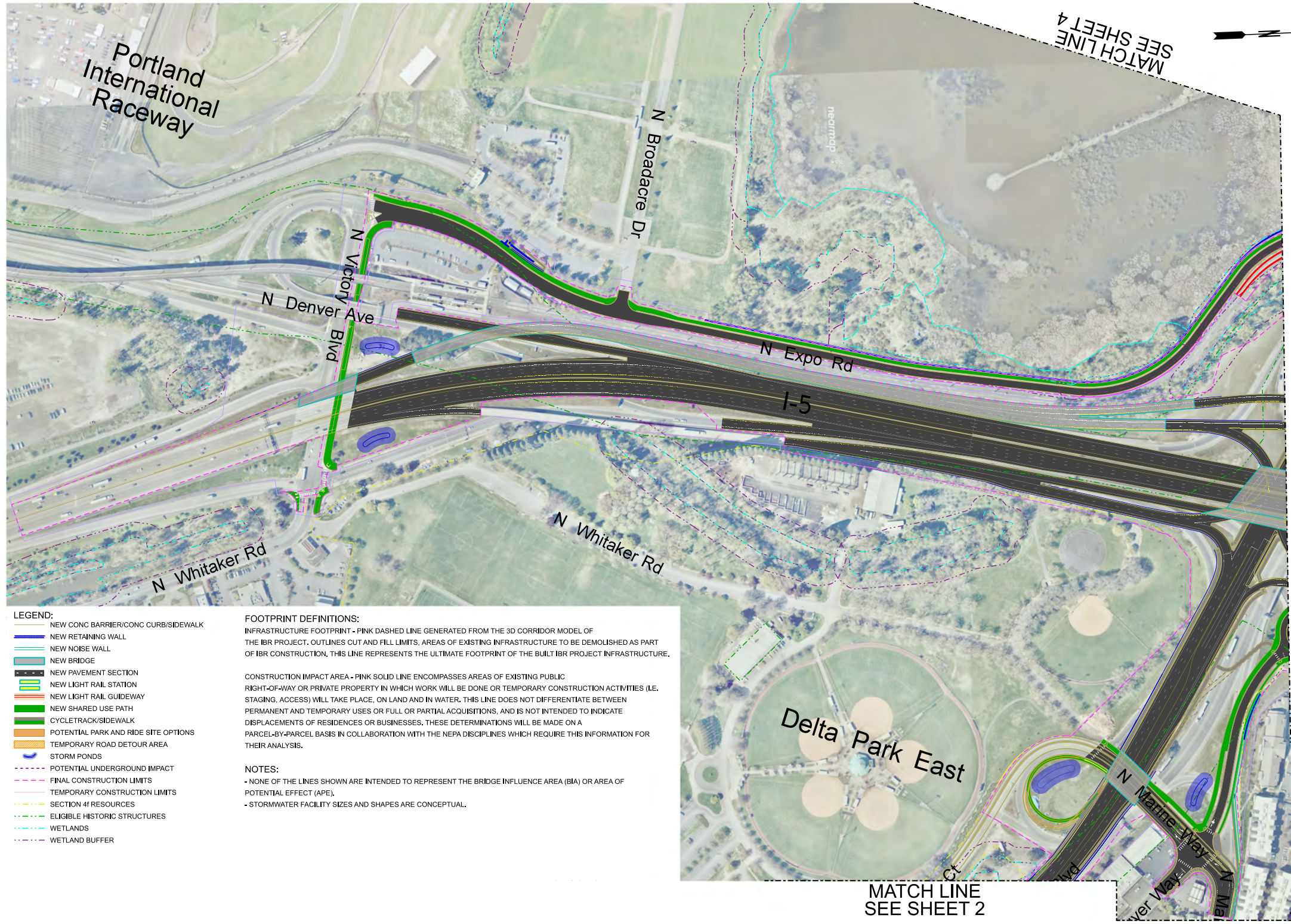
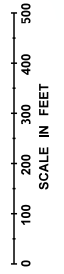


Appendix C

CONCEPTUAL DESIGN DRAWINGS

For detailed audio description of the conceptual design drawings, visit: <https://youtu.be/qhI7l3aR-rM>



MATCH LINE
 SEE SHEET 3

MATCH LINE
 SEE SHEET 4

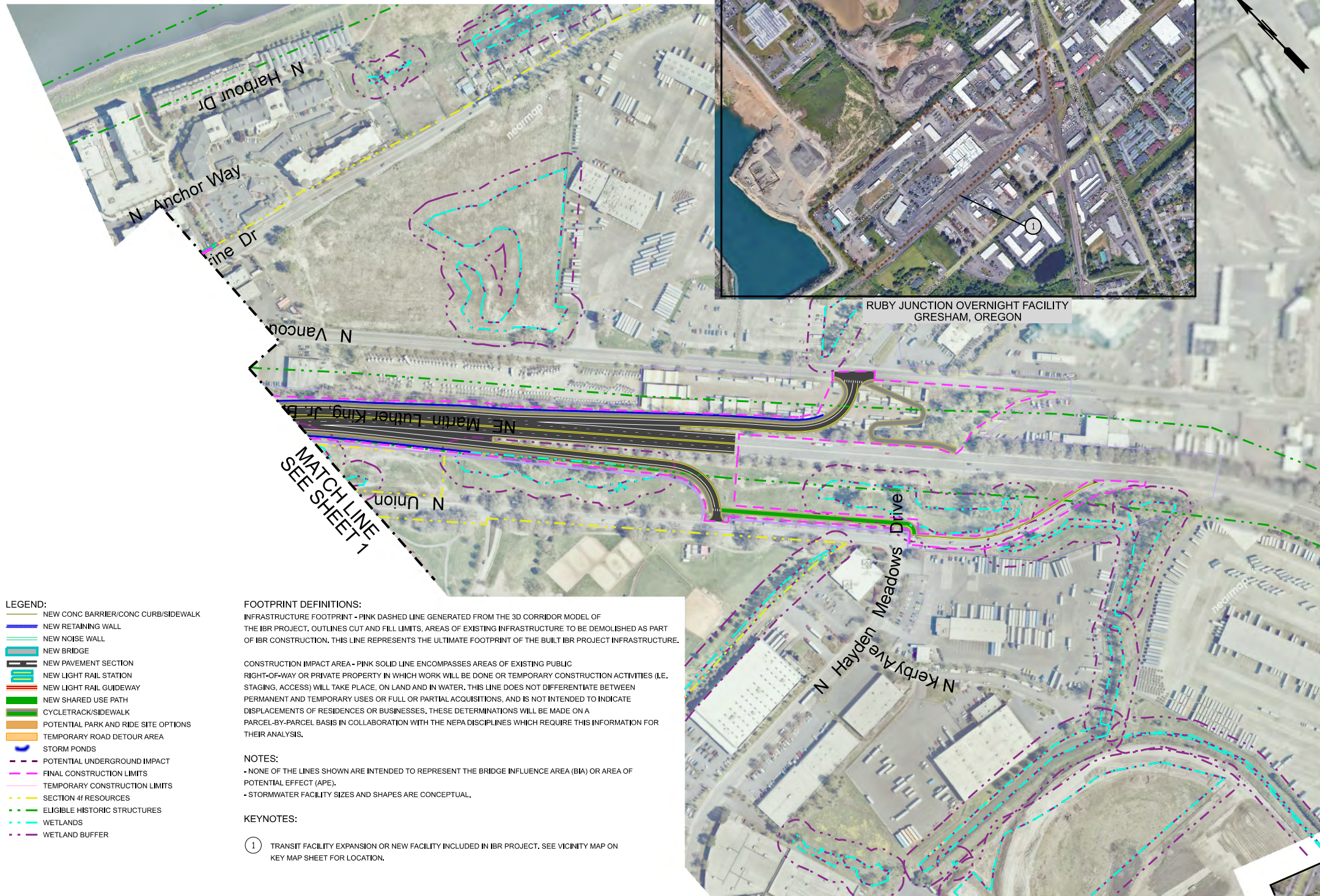
MATCH LINE
 SEE SHEET 2

- LEGEND:**
- NEW CONC BARRIER/CONC CURB/SIDEWALK
 - NEW RETAINING WALL
 - NEW NOISE WALL
 - NEW BRIDGE
 - NEW PAVEMENT SECTION
 - NEW LIGHT RAIL STATION
 - NEW LIGHT RAIL GUIDEWAY
 - NEW SHARED USE PATH
 - CYCLETRACK/SIDEWALK
 - POTENTIAL PARK AND RIDE SITE OPTIONS
 - TEMPORARY ROAD DETOUR AREA
 - STORM PONDS
 - POTENTIAL UNDERGROUND IMPACT
 - FINAL CONSTRUCTION LIMITS
 - TEMPORARY CONSTRUCTION LIMITS
 - SECTION 4f RESOURCES
 - ELIGIBLE HISTORIC STRUCTURES
 - WETLANDS
 - WETLAND BUFFER

FOOTPRINT DEFINITIONS:
 INFRASTRUCTURE FOOTPRINT - PINK DASHED LINE GENERATED FROM THE 3D CORRIDOR MODEL OF THE IBR PROJECT. OUTLINES CUT AND FILL LIMITS, AREAS OF EXISTING INFRASTRUCTURE TO BE DEMOLISHED AS PART OF IBR CONSTRUCTION, THIS LINE REPRESENTS THE ULTIMATE FOOTPRINT OF THE BUILT IBR PROJECT INFRASTRUCTURE.

CONSTRUCTION IMPACT AREA - PINK SOLID LINE ENCOMPASSES AREAS OF EXISTING PUBLIC RIGHT-OF-WAY OR PRIVATE PROPERTY IN WHICH WORK WILL BE DONE OR TEMPORARY CONSTRUCTION ACTIVITIES (I.E. STAGING, ACCESS) WILL TAKE PLACE, ON LAND AND IN WATER. THIS LINE DOES NOT DIFFERENTIATE BETWEEN PERMANENT AND TEMPORARY USES OR FULL OR PARTIAL ACQUISITIONS, AND IS NOT INTENDED TO INDICATE DISPLACEMENTS OF RESIDENCES OR BUSINESSES. THESE DETERMINATIONS WILL BE MADE ON A PARCEL-BY-PARCEL BASIS IN COLLABORATION WITH THE NEPA DISCIPLINES WHICH REQUIRE THIS INFORMATION FOR THEIR ANALYSIS.

NOTES:
 - NONE OF THE LINES SHOWN ARE INTENDED TO REPRESENT THE BRIDGE INFLUENCE AREA (BIA) OR AREA OF POTENTIAL EFFECT (APE).
 - STORMWATER FACILITY SIZES AND SHAPES ARE CONCEPTUAL.



- LEGEND:**
- NEW CONC BARRIER/CONC CURB/SIDEWALK
 - NEW RETAINING WALL
 - NEW NOISE WALL
 - NEW BRIDGE
 - NEW PAVEMENT SECTION
 - NEW LIGHT RAIL STATION
 - NEW LIGHT RAIL GUIDEWAY
 - NEW SHARED USE PATH
 - CYCLETRACK/SIDEWALK
 - POTENTIAL PARK AND RIDE SITE OPTIONS
 - TEMPORARY ROAD DETOUR AREA
 - STORM PONDS
 - POTENTIAL UNDERGROUND IMPACT
 - FINAL CONSTRUCTION LIMITS
 - TEMPORARY CONSTRUCTION LIMITS
 - SECTION 4f RESOURCES
 - ELIGIBLE HISTORIC STRUCTURES
 - WETLANDS
 - WETLAND BUFFER

FOOTPRINT DEFINITIONS:
 INFRASTRUCTURE FOOTPRINT - PINK DASHED LINE GENERATED FROM THE 3D CORRIDOR MODEL OF THE IBR PROJECT. OUTLINES CUT AND FILL LIMITS, AREAS OF EXISTING INFRASTRUCTURE TO BE DEMOLISHED AS PART OF IBR CONSTRUCTION. THIS LINE REPRESENTS THE ULTIMATE FOOTPRINT OF THE BUILT IBR PROJECT INFRASTRUCTURE.

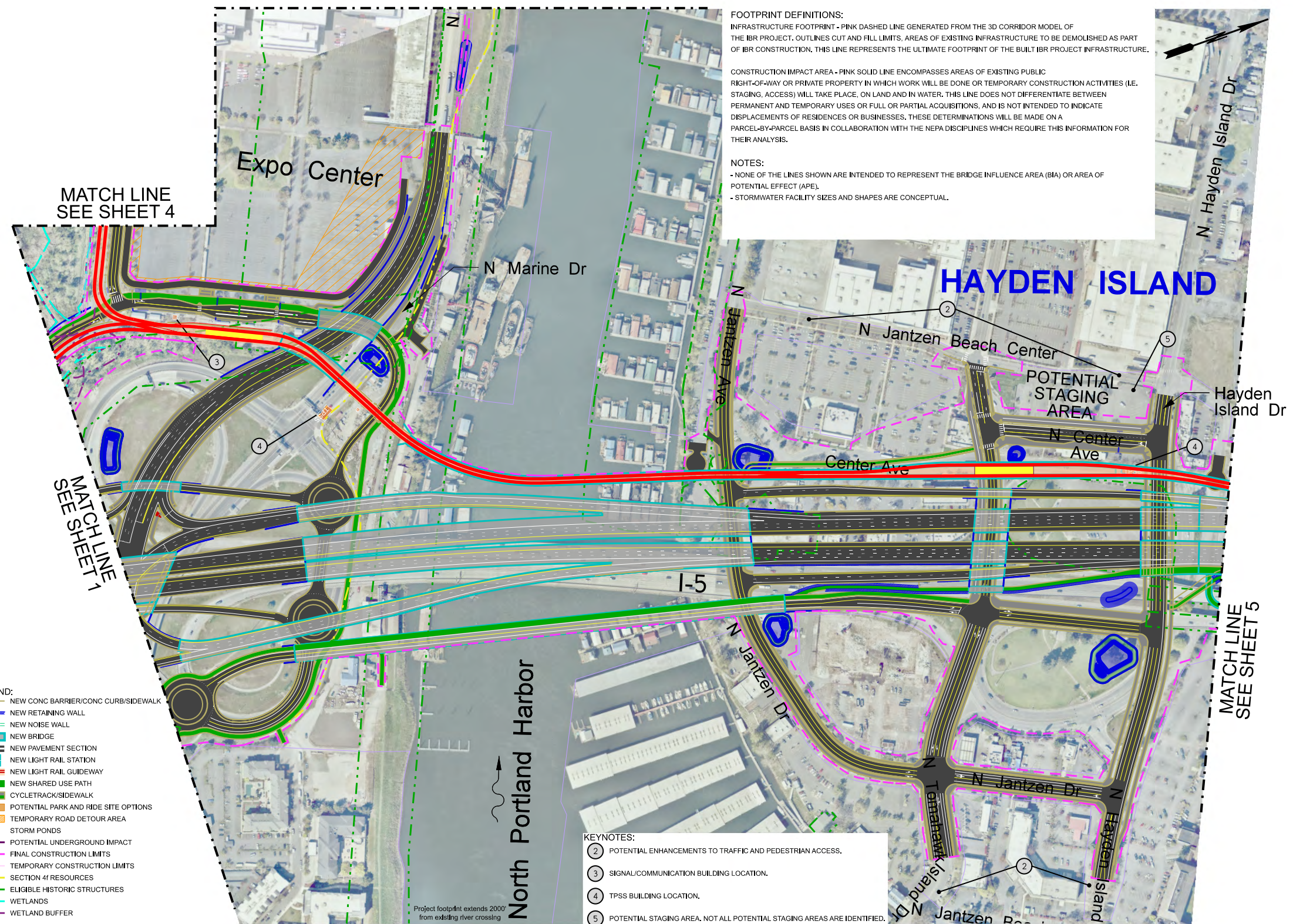
CONSTRUCTION IMPACT AREA - PINK SOLID LINE ENCOMPASSES AREAS OF EXISTING PUBLIC RIGHT-OF-WAY OR PRIVATE PROPERTY IN WHICH WORK WILL BE DONE OR TEMPORARY CONSTRUCTION ACTIVITIES (I.E. STAGING, ACCESS) WILL TAKE PLACE, ON LAND AND IN WATER. THIS LINE DOES NOT DIFFERENTIATE BETWEEN PERMANENT AND TEMPORARY USES OR FULL OR PARTIAL ACQUISITIONS, AND IS NOT INTENDED TO INDICATE DISPLACEMENTS OF RESIDENCES OR BUSINESSES. THESE DETERMINATIONS WILL BE MADE ON A PARCEL-BY-PARCEL BASIS IN COLLABORATION WITH THE NEPA DISCIPLINES WHICH REQUIRE THIS INFORMATION FOR THEIR ANALYSIS.

NOTES:
 - NONE OF THE LINES SHOWN ARE INTENDED TO REPRESENT THE BRIDGE INFLUENCE AREA (BIA) OR AREA OF POTENTIAL EFFECT (APE).
 - STORMWATER FACILITY SIZES AND SHAPES ARE CONCEPTUAL.

KEYNOTES:
 ① TRANSIT FACILITY EXPANSION OR NEW FACILITY INCLUDED IN IBR PROJECT. SEE VICINITY MAP ON KEY MAP SHEET FOR LOCATION.

FOOTPRINT DEFINITIONS:
 INFRASTRUCTURE FOOTPRINT - PINK DASHED LINE GENERATED FROM THE 3D CORRIDOR MODEL OF THE IBR PROJECT. OUTLINES CUT AND FILL LIMITS. AREAS OF EXISTING INFRASTRUCTURE TO BE DEMOLISHED AS PART OF IBR CONSTRUCTION, THIS LINE REPRESENTS THE ULTIMATE FOOTPRINT OF THE BUILT IBR PROJECT INFRASTRUCTURE.
 CONSTRUCTION IMPACT AREA - PINK SOLID LINE ENCOMPASSES AREAS OF EXISTING PUBLIC RIGHT-OF-WAY OR PRIVATE PROPERTY IN WHICH WORK WILL BE DONE OR TEMPORARY CONSTRUCTION ACTIVITIES (I.E. STAGING, ACCESS) WILL TAKE PLACE, ON LAND AND IN WATER. THIS LINE DOES NOT DIFFERENTIATE BETWEEN PERMANENT AND TEMPORARY USES OR FULL OR PARTIAL ACQUISITIONS, AND IS NOT INTENDED TO INDICATE DISPLACEMENTS OF RESIDENCES OR BUSINESSES. THESE DETERMINATIONS WILL BE MADE ON A PARCEL-BY-PARCEL BASIS IN COLLABORATION WITH THE NEPA DISCIPLINES WHICH REQUIRE THIS INFORMATION FOR THEIR ANALYSIS.

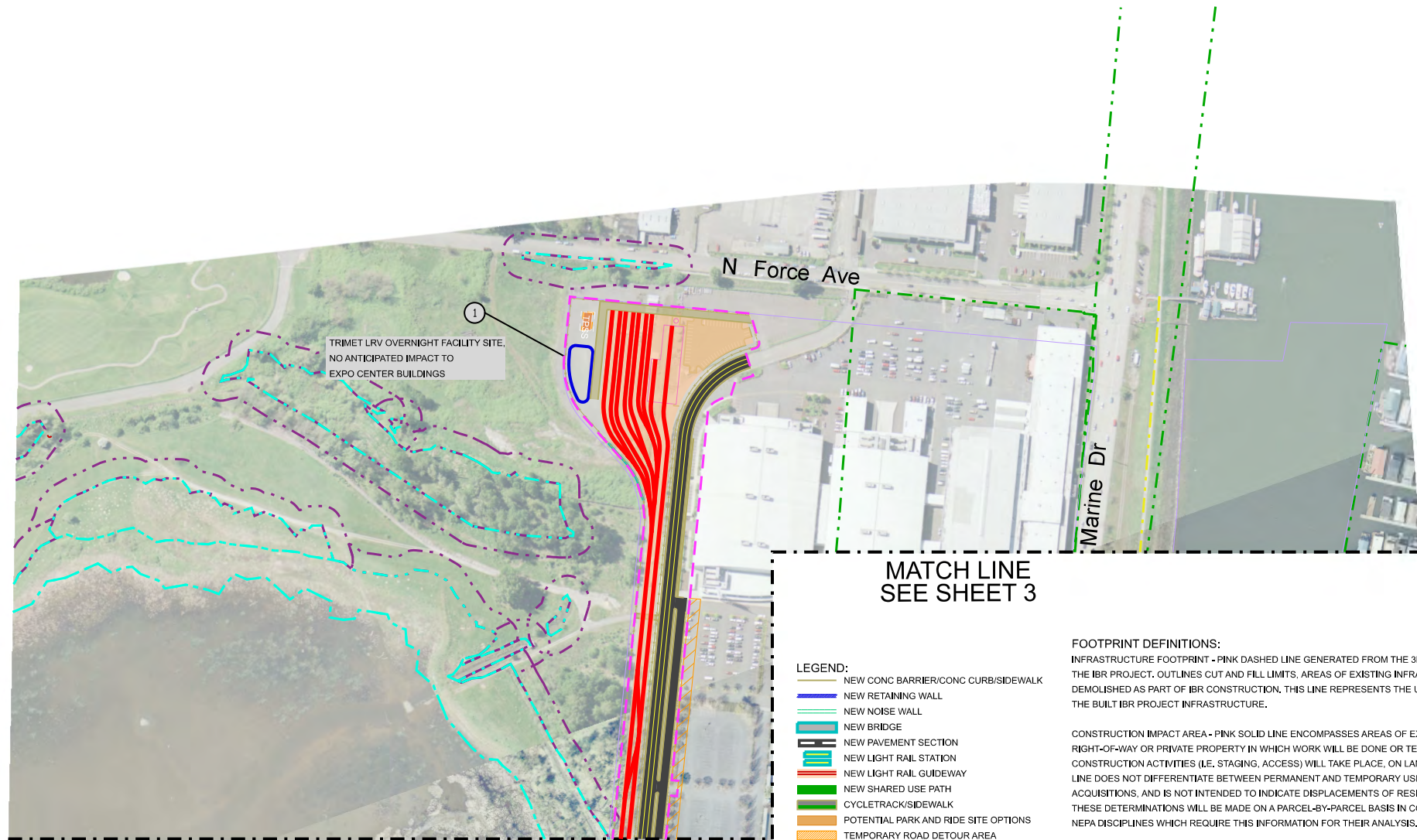
NOTES:
 - NONE OF THE LINES SHOWN ARE INTENDED TO REPRESENT THE BRIDGE INFLUENCE AREA (BIA) OR AREA OF POTENTIAL EFFECT (APE).
 - STORMWATER FACILITY SIZES AND SHAPES ARE CONCEPTUAL.



- LEGEND:**
- NEW CONC BARRIER/CONC CURB/SIDEWALK
 - NEW RETAINING WALL
 - NEW NOISE WALL
 - NEW BRIDGE
 - NEW PAVEMENT SECTION
 - NEW LIGHT RAIL STATION
 - NEW LIGHT RAIL GUIDEWAY
 - NEW SHARED USE PATH
 - CYCLETRACK/SIDEWALK
 - POTENTIAL PARK AND RIDE SITE OPTIONS
 - TEMPORARY ROAD DETOUR AREA
 - STORM PONDS
 - POTENTIAL UNDERGROUND IMPACT
 - FINAL CONSTRUCTION LIMITS
 - TEMPORARY CONSTRUCTION LIMITS
 - SECTION 41 RESOURCES
 - ELIGIBLE HISTORIC STRUCTURES
 - WETLANDS
 - WETLAND BUFFER

- KEYNOTES:**
- ② POTENTIAL ENHANCEMENTS TO TRAFFIC AND PEDESTRIAN ACCESS.
 - ③ SIGNAL/COMMUNICATION BUILDING LOCATION.
 - ④ TPSS BUILDING LOCATION.
 - ⑤ POTENTIAL STAGING AREA. NOT ALL POTENTIAL STAGING AREAS ARE IDENTIFIED.

Project footprint extends 2000' from existing river crossing



MATCH LINE
SEE SHEET 1

MATCH LINE
SEE SHEET 3

MATCH LINE
SEE SHEET 3

TRIMET LRV OVERNIGHT FACILITY SITE.
NO ANTICIPATED IMPACT TO
EXPO CENTER BUILDINGS

- LEGEND:**
- NEW CONC BARRIER/CONC CURB/SIDEWALK
 - NEW RETAINING WALL
 - NEW NOISE WALL
 - NEW BRIDGE
 - NEW PAVEMENT SECTION
 - NEW LIGHT RAIL STATION
 - NEW LIGHT RAIL GUIDEWAY
 - NEW SHARED USE PATH
 - CYCLETRACK/SIDEWALK
 - POTENTIAL PARK AND RIDE SITE OPTIONS
 - TEMPORARY ROAD DETOUR AREA
 - STORM PONDS
 - POTENTIAL UNDERGROUND IMPACT
 - FINAL CONSTRUCTION LIMITS
 - TEMPORARY CONSTRUCTION LIMITS
 - SECTION 4f RESOURCES
 - ELIGIBLE HISTORIC STRUCTURES
 - WETLANDS
 - WETLAND BUFFER

FOOTPRINT DEFINITIONS:
INFRASTRUCTURE FOOTPRINT - PINK DASHED LINE GENERATED FROM THE 3D CORRIDOR MODEL OF THE IBR PROJECT. OUTLINES CUT AND FILL LIMITS. AREAS OF EXISTING INFRASTRUCTURE TO BE DEMOLISHED AS PART OF IBR CONSTRUCTION, THIS LINE REPRESENTS THE ULTIMATE FOOTPRINT OF THE BUILT IBR PROJECT INFRASTRUCTURE.

CONSTRUCTION IMPACT AREA - PINK SOLID LINE ENCOMPASSES AREAS OF EXISTING PUBLIC RIGHT-OF-WAY OR PRIVATE PROPERTY IN WHICH WORK WILL BE DONE OR TEMPORARY CONSTRUCTION ACTIVITIES (I.E. STAGING, ACCESS) WILL TAKE PLACE, ON LAND AND IN WATER. THIS LINE DOES NOT DIFFERENTIATE BETWEEN PERMANENT AND TEMPORARY USES OR FULL OR PARTIAL ACQUISITIONS, AND IS NOT INTENDED TO INDICATE DISPLACEMENTS OF RESIDENCES OR BUSINESSES. THESE DETERMINATIONS WILL BE MADE ON A PARCEL-BY-PARCEL BASIS IN COLLABORATION WITH THE NEPA DISCIPLINES WHICH REQUIRE THIS INFORMATION FOR THEIR ANALYSIS.

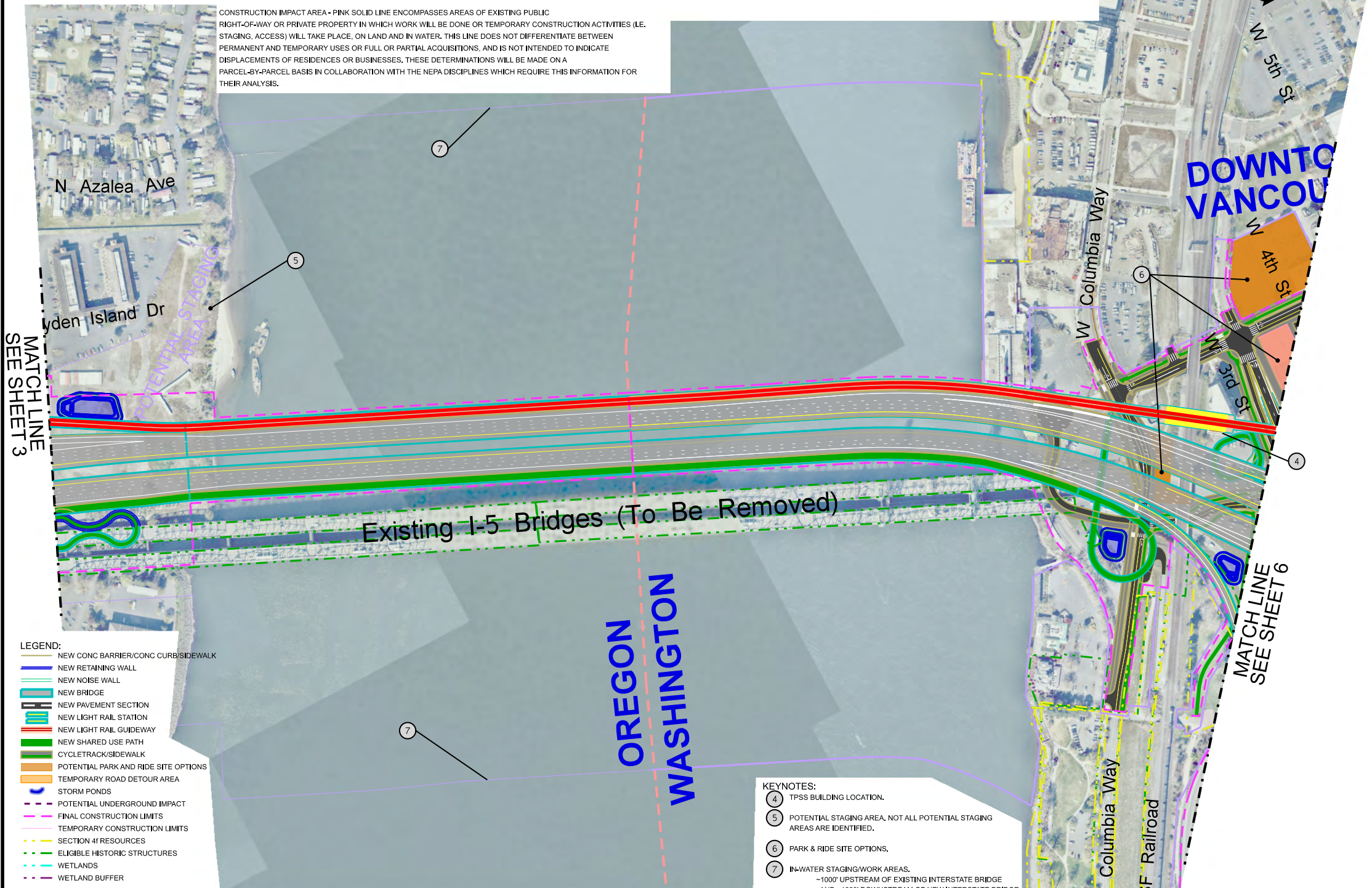
NOTES:
- NONE OF THE LINES SHOWN ARE INTENDED TO REPRESENT THE BRIDGE INFLUENCE AREA (BIA) OR AREA OF POTENTIAL EFFECT (APE).
- STORMWATER FACILITY SIZES AND SHAPES ARE CONCEPTUAL.

KEYNOTES:
1 TRANSIT FACILITY EXPANSION OR NEW FACILITY INCLUDED IN IBR PROJECT.

FOOTPRINT DEFINITIONS:
 INFRASTRUCTURE FOOTPRINT - PINK DASHED LINE GENERATED FROM THE 3D CORRIDOR MODEL OF THE IBR PROJECT. OUTLINES CUT AND FILL LIMITS, AREAS OF EXISTING INFRASTRUCTURE TO BE DEMOLISHED AS PART OF IBR CONSTRUCTION, THIS LINE REPRESENTS THE ULTIMATE FOOTPRINT OF THE BUILT IBR PROJECT INFRASTRUCTURE.

NOTES:
 - NONE OF THE LINES SHOWN ARE INTENDED TO REPRESENT THE BRIDGE INFLUENCE AREA (BIA) OR AREA OF POTENTIAL EFFECT (APE).
 - STORMWATER FACILITY SIZES AND SHAPES ARE CONCEPTUAL.

CONSTRUCTION IMPACT AREA - PINK SOLID LINE ENCOMPASSES AREAS OF EXISTING PUBLIC RIGHT-OF-WAY OR PRIVATE PROPERTY IN WHICH WORK WILL BE DONE OR TEMPORARY CONSTRUCTION ACTIVITIES (I.E. STAGING, ACCESS) WILL TAKE PLACE, ON LAND AND IN WATER. THIS LINE DOES NOT DIFFERENTIATE BETWEEN PERMANENT AND TEMPORARY USES OR FULL OR PARTIAL ACQUISITIONS, AND IS NOT INTENDED TO INDICATE DISPLACEMENTS OF RESIDENCES OR BUSINESSES. THESE DETERMINATIONS WILL BE MADE ON A PARCEL-BY-PARCEL BASIS IN COLLABORATION WITH THE NEPA DISCIPLINES WHICH REQUIRE THIS INFORMATION FOR THEIR ANALYSIS.



- LEGEND:**
- NEW CONC BARRIER/CONC CURB/SIDEWALK
 - NEW RETAINING WALL
 - NEW NOISE WALL
 - NEW BRIDGE
 - NEW PAVEMENT SECTION
 - NEW LIGHT RAIL STATION
 - NEW LIGHT RAIL GUIDEWAY
 - NEW SHARED USE PATH
 - CYCLETRACK/SIDEWALK
 - POTENTIAL PARK AND RIDE SITE OPTIONS
 - TEMPORARY ROAD DETOUR AREA
 - STORM PONDS
 - POTENTIAL UNDERGROUND IMPACT
 - FINAL CONSTRUCTION LIMITS
 - TEMPORARY CONSTRUCTION LIMITS
 - SECTION 4f RESOURCES
 - ELIGIBLE HISTORIC STRUCTURES
 - WETLANDS
 - WETLAND BUFFER

- KEYNOTES:**
- ④ TPSS BUILDING LOCATION.
 - ⑤ POTENTIAL STAGING AREA, NOT ALL POTENTIAL STAGING AREAS ARE IDENTIFIED.
 - ⑥ PARK & RIDE SITE OPTIONS.
 - ⑦ IN-WATER STAGING/WORK AREAS.
 ~1000' UPSTREAM OF EXISTING INTERSTATE BRIDGE AND ~1000' DOWNSTREAM OF NEW INTERSTATE BRIDGE.
 ~2000' UPSTREAM AND DOWNSTREAM OF NEW NORTH PORTLAND HARBOR BRIDGES.

INTERSTATE BRIDGE REPLACEMENT PROGRAM
 1 AUX, SINGLE LEVEL BRIDGE, WITH C STREET - JUNE 2025
 SHEET 5 OF 9



FOOTPRINT DEFINITIONS:

INFRASTRUCTURE FOOTPRINT - PINK DASHED LINE GENERATED FROM THE 3D CORRIDOR MODEL OF THE IBR PROJECT, OUTLINES CUT AND FILL LIMITS, AREAS OF EXISTING INFRASTRUCTURE TO BE DEMOLISHED AS PART OF IBR CONSTRUCTION. THIS LINE REPRESENTS THE ULTIMATE FOOTPRINT OF THE BUILT IBR PROJECT INFRASTRUCTURE.















CONSTRUCTION IMPACT AREA - PINK SOLID LINE ENCOMPASSES AREAS OF EXISTING PUBLIC RIGHT-OF-WAY OR PRIVATE PROPERTY IN WHICH WORK WILL BE DONE OR TEMPORARY CONSTRUCTION ACTIVITIES (I.E. STAGING, ACCESS) WILL TAKE PLACE, ON LAND AND IN WATER. THIS LINE DOES NOT DIFFERENTIATE BETWEEN PERMANENT AND TEMPORARY USES OR FULL OR PARTIAL ACQUISITIONS, AND IS NOT INTENDED TO INDICATE DISPLACEMENTS OF RESIDENCES OR BUSINESSES. THESE DETERMINATIONS WILL BE MADE ON A PARCEL-BY-PARCEL BASIS IN COLLABORATION WITH THE NEPA DISCIPLINES WHICH REQUIRE THIS INFORMATION FOR THEIR ANALYSIS.

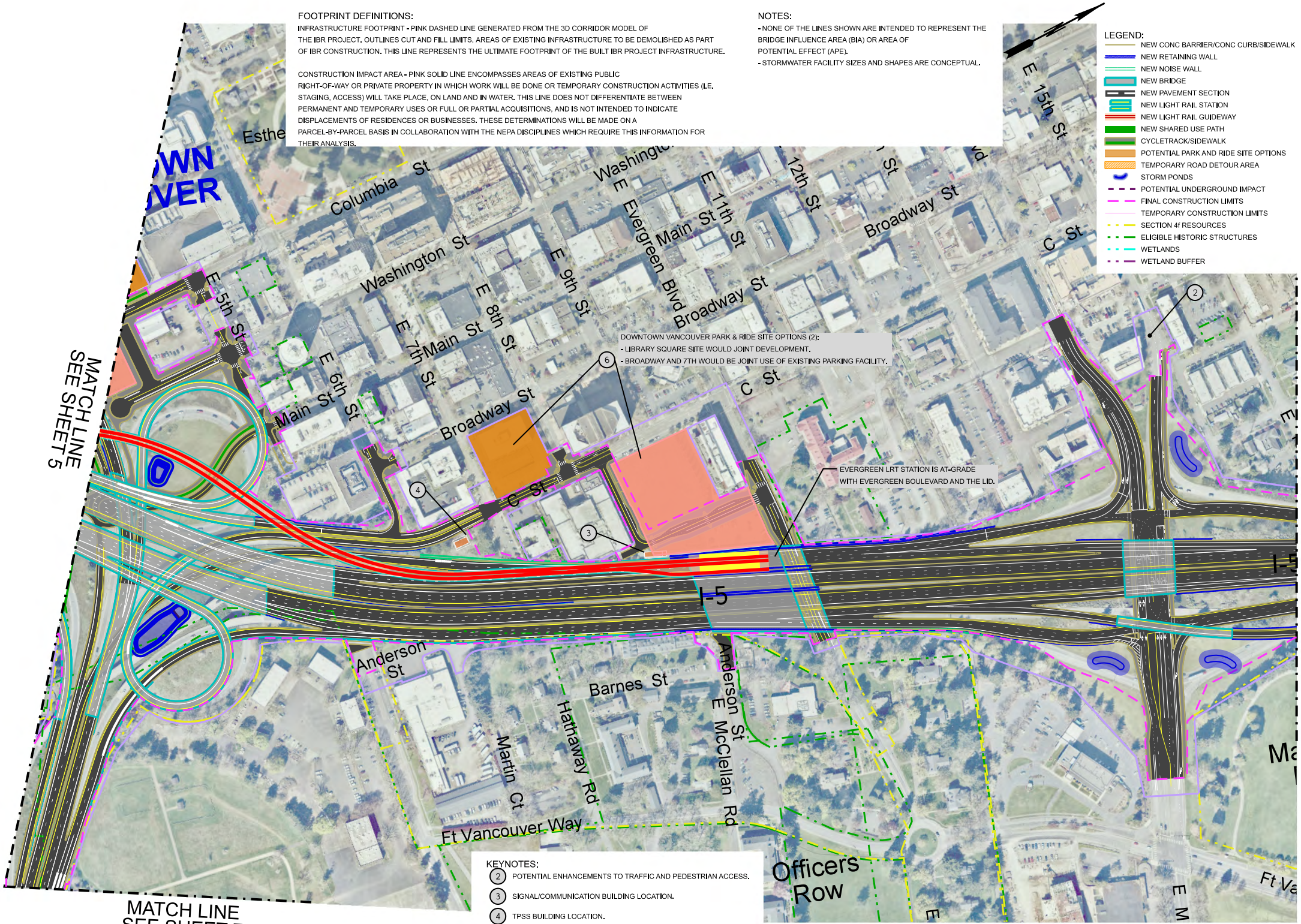
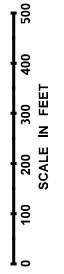
NOTES:

- NONE OF THE LINES SHOWN ARE INTENDED TO REPRESENT THE BRIDGE INFLUENCE AREA (BIA) OR AREA OF POTENTIAL EFFECT (APE).
- STORMWATER FACILITY SIZES AND SHAPES ARE CONCEPTUAL.







LEGEND:

-  NEW CONC BARRIER/CONC CURB/SIDEWALK
-  NEW RETAINING WALL
-  NEW NOISE WALL
-  NEW BRIDGE
-  NEW PAVEMENT SECTION
-  NEW LIGHT RAIL STATION
-  NEW LIGHT RAIL GUIDEWAY
-  NEW SHARED USE PATH
-  CYCLETRACK/SIDEWALK
-  POTENTIAL PARK AND RIDE SITE OPTIONS
-  TEMPORARY ROAD DETOUR AREA
-  STORM PONDS
-  POTENTIAL UNDERGROUND IMPACT
-  FINAL CONSTRUCTION LIMITS
-  TEMPORARY CONSTRUCTION LIMITS
-  SECTION 4F RESOURCES
-  ELIGIBLE HISTORIC STRUCTURES
-  WETLANDS
-  WETLAND BUFFER



DOWNTOWN VANCOUVER PARK & RIDE SITE OPTIONS (2):
- LIBRARY SQUARE SITE WOULD JOINT DEVELOPMENT.
- BROADWAY AND 7TH WOULD BE JOINT USE OF EXISTING PARKING FACILITY.

EVERGREEN LRT STATION IS AT-GRADE WITH EVERGREEN BOULEVARD AND THE LID.

- KEYNOTES:**
-  POTENTIAL ENHANCEMENTS TO TRAFFIC AND PEDESTRIAN ACCESS.
 -  SIGNAL/COMMUNICATION BUILDING LOCATION.
 -  TPSS BUILDING LOCATION.
 -  PARK & RIDE SITE OPTIONS.

MATCH LINE SEE SHEET 5

MATCH LINE SEE SHEET 7

MATCH LINE SEE SHEET 8

FOOTPRINT DEFINITIONS:

INFRASTRUCTURE FOOTPRINT - PINK DASHED LINE GENERATED FROM THE 3D CORRIDOR MODEL OF THE IBR PROJECT. OUTLINES CUT AND FILL LIMITS, AREAS OF EXISTING INFRASTRUCTURE TO BE DEMOLISHED AS PART OF IBR CONSTRUCTION. THIS LINE REPRESENTS THE ULTIMATE FOOTPRINT OF THE BUILT IBR PROJECT INFRASTRUCTURE.

CONSTRUCTION IMPACT AREA - PINK SOLID LINE ENCOMPASSES AREAS OF EXISTING PUBLIC RIGHT-OF-WAY OR PRIVATE PROPERTY IN WHICH WORK WILL BE DONE OR TEMPORARY CONSTRUCTION ACTIVITIES (I.E., STAGING, ACCESS) WILL TAKE PLACE, ON LAND AND IN WATER. THIS LINE DOES NOT DIFFERENTIATE BETWEEN PERMANENT AND TEMPORARY USES OR FULL OR PARTIAL ACQUISITIONS, AND IS NOT INTENDED TO INDICATE DISPLACEMENTS OF RESIDENCES OR BUSINESSES. THESE DETERMINATIONS WILL BE MADE ON A PARCEL-BY-PARCEL BASIS IN COLLABORATION WITH THE NEPA DISCIPLINES WHICH REQUIRE THIS INFORMATION FOR THEIR ANALYSIS.

NOTES:

- NONE OF THE LINES SHOWN ARE INTENDED TO REPRESENT THE BRIDGE INFLUENCE AREA (BIA) OR AREA OF POTENTIAL EFFECT (APE).
- STORMWATER FACILITY SIZES AND SHAPES ARE CONCEPTUAL.

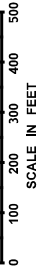


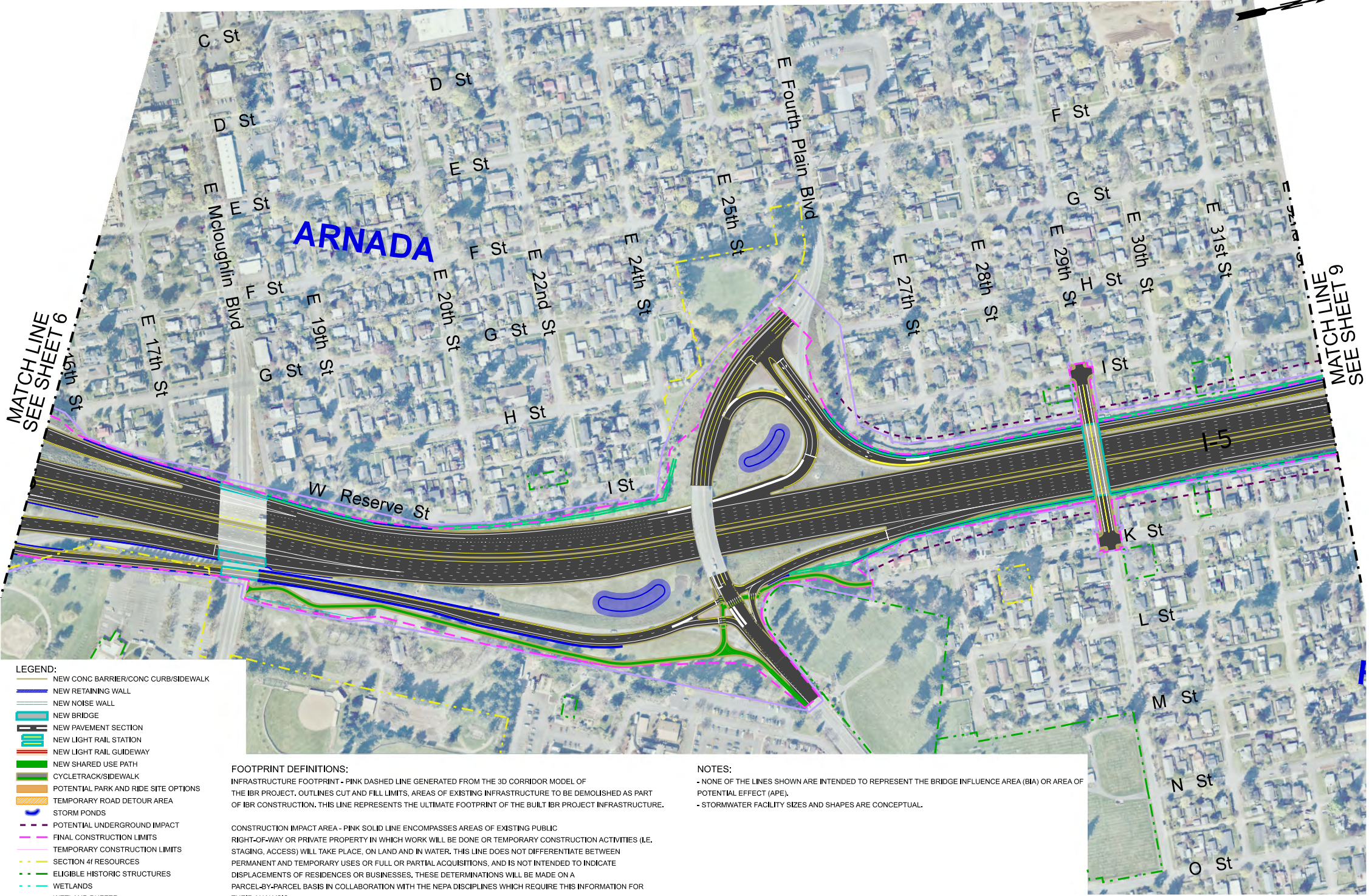
MATCH LINE
SEE SHEET 6

LEGEND:

- NEW CONC BARRIER/CONC CURB/SIDEWALK
- NEW RETAINING WALL
- NEW NOISE WALL
- NEW BRIDGE
- NEW PAVEMENT SECTION
- NEW LIGHT RAIL STATION
- NEW LIGHT RAIL GUIDEWAY
- NEW SHARED USE PATH
- CYCLETRACK/SIDEWALK
- POTENTIAL PARK AND RIDE SITE OPTIONS
- TEMPORARY ROAD DETOUR AREA
- STORM PONDS
- POTENTIAL UNDERGROUND IMPACT
- FINAL CONSTRUCTION LIMITS
- TEMPORARY CONSTRUCTION LIMITS
- SECTION 41 RESOURCES
- ELIGIBLE HISTORIC STRUCTURES
- WETLANDS
- WETLAND BUFFER

INTERSTATE BRIDGE REPLACEMENT PROGRAM
1 AUX, SINGLE LEVEL BRIDGE, WITH C STREET - JUNE 2025
SHEET 7 OF 9





- LEGEND:**
- NEW CONC BARRIER/CONC CURB/SIDEWALK
 - NEW RETAINING WALL
 - NEW NOISE WALL
 - NEW BRIDGE
 - NEW PAVEMENT SECTION
 - NEW LIGHT RAIL STATION
 - NEW LIGHT RAIL GUIDEWAY
 - NEW SHARED USE PATH
 - CYCLETRACK/SIDEWALK
 - POTENTIAL PARK AND RIDE SITE OPTIONS
 - TEMPORARY ROAD DETOUR AREA
 - STORM PONDS
 - POTENTIAL UNDERGROUND IMPACT
 - FINAL CONSTRUCTION LIMITS
 - TEMPORARY CONSTRUCTION LIMITS
 - SECTION 4f RESOURCES
 - ELIGIBLE HISTORIC STRUCTURES
 - WETLANDS
 - WETLAND BUFFER

FOOTPRINT DEFINITIONS:

INFRASTRUCTURE FOOTPRINT - PINK DASHED LINE GENERATED FROM THE 3D CORRIDOR MODEL OF THE IBR PROJECT. OUTLINES CUT AND FILL LIMITS, AREAS OF EXISTING INFRASTRUCTURE TO BE DEMOLISHED AS PART OF IBR CONSTRUCTION. THIS LINE REPRESENTS THE ULTIMATE FOOTPRINT OF THE BUILT IBR PROJECT INFRASTRUCTURE.

CONSTRUCTION IMPACT AREA - PINK SOLID LINE ENCOMPASSES AREAS OF EXISTING PUBLIC RIGHT-OF-WAY OR PRIVATE PROPERTY IN WHICH WORK WILL BE DONE OR TEMPORARY CONSTRUCTION ACTIVITIES (I.E. STAGING, ACCESS) WILL TAKE PLACE, ON LAND AND IN WATER. THIS LINE DOES NOT DIFFERENTIATE BETWEEN PERMANENT AND TEMPORARY USES OR FULL OR PARTIAL ACQUISITIONS, AND IS NOT INTENDED TO INDICATE DISPLACEMENTS OF RESIDENCES OR BUSINESSES. THESE DETERMINATIONS WILL BE MADE ON A PARCEL-BY-PARCEL BASIS IN COLLABORATION WITH THE NEPA DISCIPLINES WHICH REQUIRE THIS INFORMATION FOR THEIR ANALYSIS.

NOTES:

- NONE OF THE LINES SHOWN ARE INTENDED TO REPRESENT THE BRIDGE INFLUENCE AREA (BIA) OR AREA OF POTENTIAL EFFECT (APE).
- STORMWATER FACILITY SIZES AND SHAPES ARE CONCEPTUAL.



MATCH LINE
SEE SHEET 8

- LEGEND:**
- NEW CONC BARRIER/CONC CURB/SIDEWALK
 - NEW RETAINING WALL
 - NEW NOISE WALL
 - NEW BRIDGE
 - NEW PAVEMENT SECTION
 - NEW LIGHT RAIL STATION
 - NEW LIGHT RAIL GUIDEWAY
 - NEW SHARED USE PATH
 - CYCLETRACK/SIDEWALK
 - POTENTIAL PARK AND RIDE SITE OPTIONS
 - TEMPORARY ROAD DETOUR AREA
 - STORM PONDS
 - POTENTIAL UNDERGROUND IMPACT
 - FINAL CONSTRUCTION LIMITS
 - TEMPORARY CONSTRUCTION LIMITS
 - SECTION 4f RESOURCES
 - ELIGIBLE HISTORIC STRUCTURES
 - WETLANDS
 - WETLAND BUFFER
 - 80' WETLAND BUFFER

FOOTPRINT DEFINITIONS:

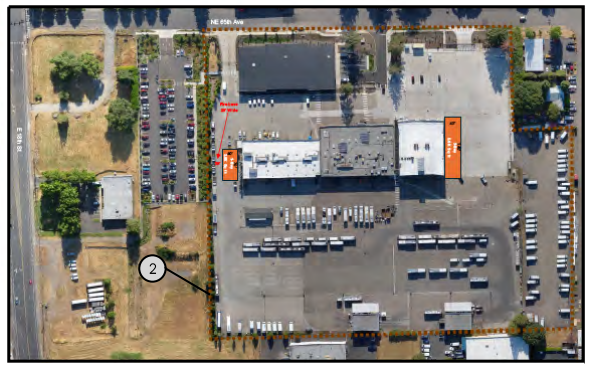
INFRASTRUCTURE FOOTPRINT - PINK DASHED LINE GENERATED FROM THE 3D CORRIDOR MODEL OF THE IBR PROJECT. OUTLINES CUT AND FILL LIMITS, AREAS OF EXISTING INFRASTRUCTURE TO BE DEMOLISHED AS PART OF IBR CONSTRUCTION, THIS LINE REPRESENTS THE ULTIMATE FOOTPRINT OF THE BUILT IBR PROJECT INFRASTRUCTURE.

CONSTRUCTION IMPACT AREA - PINK SOLID LINE ENCOMPASSES AREAS OF EXISTING PUBLIC RIGHT-OF-WAY OR PRIVATE PROPERTY IN WHICH WORK WILL BE DONE OR TEMPORARY CONSTRUCTION ACTIVITIES (I.E. STAGING, ACCESS) WILL TAKE PLACE, ON LAND AND IN WATER. THIS LINE DOES NOT DIFFERENTIATE BETWEEN PERMANENT AND TEMPORARY USES OR FULL OR PARTIAL ACQUISITIONS, AND IS NOT INTENDED TO INDICATE DISPLACEMENTS OF RESIDENCES OR BUSINESSES. THESE DETERMINATIONS WILL BE MADE ON A PARCEL-BY-PARCEL BASIS IN COLLABORATION WITH THE NEPA DISCIPLINES WHICH REQUIRE THIS INFORMATION FOR THEIR ANALYSIS.

NOTES:

- NONE OF THE LINES SHOWN ARE INTENDED TO REPRESENT THE BRIDGE INFLUENCE AREA (BIA) OR AREA OF POTENTIAL EFFECT (APE).
- STORMWATER FACILITY SIZES AND SHAPES ARE CONCEPTUAL.

- KEYNOTES:**
- ① TRANSIT FACILITY EXPANSION OR NEW FACILITY INCLUDED IN IBR PROJECT. SEE VICINITY MAP ON KEY MAP SHEET FOR LOCATION.
 - ② POTENTIAL ENHANCEMENTS TO TRAFFIC AND PEDESTRIAN ACCESS.



C-TRAN MAINTENANCE FACILITY
VANCOUVER, WASHINGTON