



Interstate
BRIDGE
Replacement Program



Equity Advisory Group

February 26, 2024

Closed Captions in English and Spanish

English closed captions are available within Zoom and YouTube.

Users can follow this link to view both English and Spanish captions in a separate browser window:

<https://ibr.news/captions>

Subtítulos disponible en Inglés y Español

Los subtítulos en Inglés están disponibles en Zoom y YouTube.

Usuarios pueden seguir este enlace para ver los subtítulos en Inglés y Español en una ventana separada del navegador:

<https://ibr.news/captions>

Reminders

- ▶ We encourage EAG members to turn on your video.
- ▶ Please say your name when you begin to speak.
- ▶ If you experience technical difficulties, please contact program staff at: **(360) 329-6744**

Public Input Instructions

- ▶ There will be an opportunity to provide brief public input later in the meeting today.
- ▶ To submit input after the meeting:
 - Email comments to info@interstatebridge.org with “EAG Public Comment” in the subject line
 - Call 888-503-6735 and state “EAG Public Comment” in your message



Today's agenda

- ▶ Icebreaker
- ▶ Program Administrator Update
- ▶ Equity Updates
 - December Visioning Exercise Recap
 - Equity Framework
 - EAG January Interviews Report
 - Tribal Consultation
- ▶ Vancouver Waterfront Transit Station
- ▶ Public comment
- ▶ Close out

Icebreaker

- ▶ Name + pronouns
- ▶ Affiliation
- ▶ Since it's the first meeting of the year, let's kick things off with a positive note! Share one sustainable or eco-friendly habit or resolution you've adopted for this year. It could be something you've already started or plan to implement. Looking forward to hearing everyone's green goals!

Program Update

Ray Mabey, Assist. Program Administrator

Recent Program Updates

- ▶ **U.S. Sec. of Transportation Pete Buttigieg visit**
- ▶ **Federal Highways Administrator Shailen Bhatt visit**
- ▶ **Senator Murray & Senator Cantwell visit**
- ▶ **Industry Engagement:**
 - Small Business Roundtable
 - Apex/CREDC
 - Association of General Contractors tour
- ▶ **Community Outreach:**
 - Youth press conference and tour
 - Vancouver Innovation, Technology, and Art (VITA) School
 - Community-Based Organization Listening Sessions (4)
 - Community Based Organization Community Forums (2)
 - Equity Roundtable: Strategies for Equitable Community Engagement
- ▶ **Transportation Commissions form Bi-State Tolling Subcommittee**
 - First subcommittee meeting: Feb. 23



New Draft SEIS Webpage



ENGLISH >



PROGRAM UPDATES

Supplemental Environmental Impact Statement (SEIS)

The Draft Supplemental Environmental Impact Statement (SEIS) is expected in spring 2024 !

The program is preparing to release the document this spring, which will kickoff a 60-day public comment period.

This page will provide the information necessary to learn about the process and how to review the document, as well as when and where to find opportunities to provide feedback.

www.interstatebridge.org/draftseis

A collage of images related to the Interstate Bridge Replacement Program. The top left shows the Interstate Bridge Replacement Program logo. The main image is a collage: the top left shows a construction site with cranes; the top right shows a green truck on a bridge; the bottom left shows a blue train; the bottom right shows people reviewing documents. Below the collage is the text "Interstate Bridge Replacement Program".

Interstate
BRIDGE
Replacement Program

Interstate Bridge Replacement Program

DRAFT
Supplemental
Environmental
Impact Statement
+

DRAFT
Section 4(f)
Evaluation

Spring 2024

Produced in partnership with:

Logos of partner organizations: Federal Transit Administration, FHWA, Washington State Department of Transportation, TriMet, C-TRAN, Metro, and Sound Transit.

February 26, 2024



Equity Updates

Erika McCalpine, Equity Team

December Visioning Exercise Recap

► Avoid Further Harm:

- Emphasize reducing the program's environmental footprint.
- Address concerns about tolling's impact on low-income individuals.
- Focus on rectifying past mistakes, such as I-5's impact on the landscape.
- Facilitate accessible public commentary for diverse communities.
- Address food deserts and foster community connections through grassroots initiatives.
- Emphasize the importance of diverse property purchasers and historical awareness.
- Aspire to eliminate environmental challenges and create iconic connections.

► Community Benefits:

- Align specific elements with CAG value and priorities.
- Ensure sustainability, both in cost and inclusiveness, for a 100-year lifespan.
- Explore solutions to eliminate the burden for vulnerable communities.
- Clarify service area impacts and distances
- Explore equity-centered progress and include historically marginalized communities.
- Connect the program vision to rewilding and nature.
- Address food deserts and foster community connections through grassroots initiatives.

December Visioning Exercise Recap

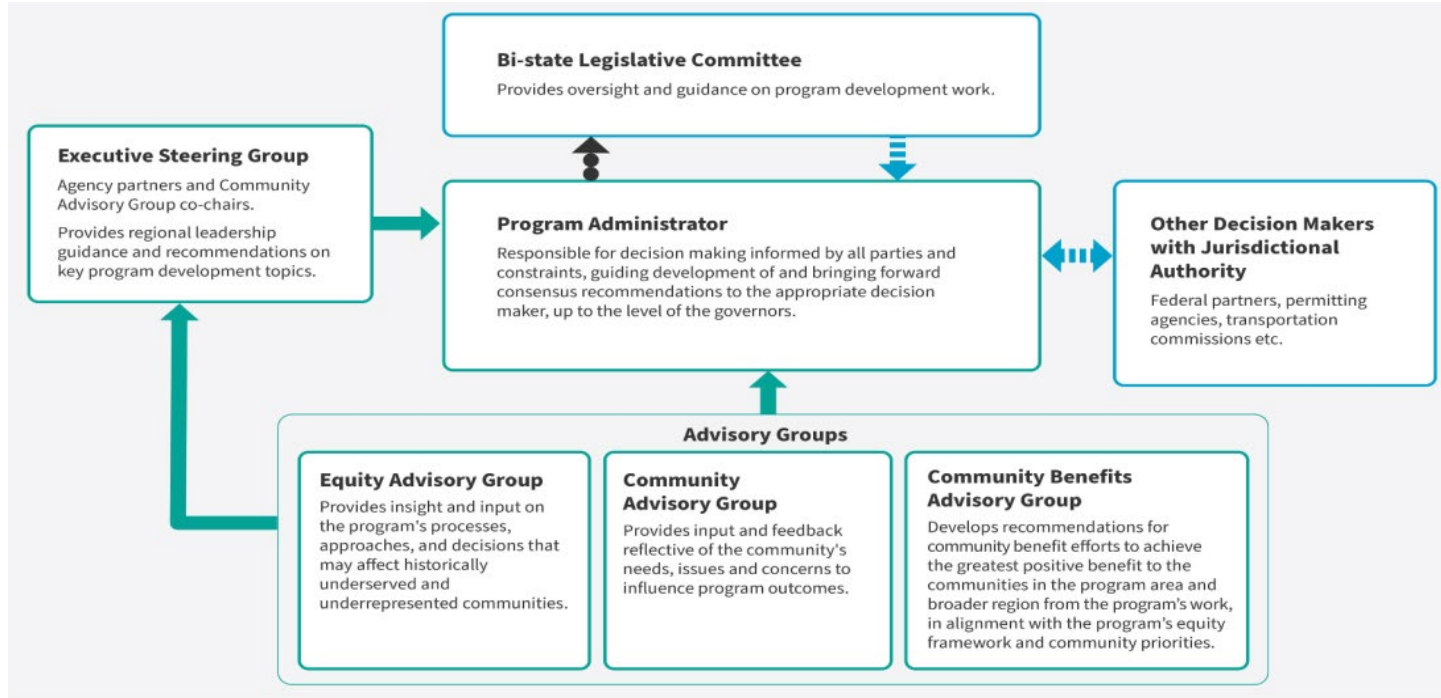
▶ Workforce Equity and Economic Opportunity:

- Create an aspirational program addressing Equity and Climate Framework guidance.
- Discuss ranking current elements in terms of priority and impact.
- Explore the future of communities in the program area after construction.
- Envision the bridge as a symbol of community pride and involvement.
- Simplify building code requirements for flexibility and development.

▶ Mobility and Accessibility

- Connect transportation and communities with the bridge.
- Make the bridge accessible to all modes of transportation.
- Prioritize access to goods, services, and opportunities, not just for cars.
- Consider the broader impact beyond I-5, including local streets and Delta Park.
- Improve biking and walking connections on the bridge.
- Prioritize accessible parks and facilities for the disability community.

Equity Framework – CBAG



KEY: Recommendations Oversight/Guidance
 Regular briefings on program work and advisory group recommendations

NOTE: Location on graphic does not indicate hierarchy. This diagram is intended as a high-level overview and does not show all engagement points.

Equity Updates

► Equity Framework

- Language added by the tribes:
 - *Forced removal of Native Americans*
 - *Tribal Governments*

► Tribal Consultation

- Does anyone have questions for our tribal liaison, Cassandra Rippee regarding tribal consultation?



Vancouver Waterfront Station

Mahlon Clements, Design Team

Upcoming Urban Design Discussions

- ▶ **Today:**

- Vancouver Waterfront Station

- ▶ **Future Meetings:**

- Hayden Island Station

- Evergreen Station

- Expo Station



Community Values & Priorities

Lenses to understand design

Equity Objectives

▶ Mobility and accessibility:

- Improve mobility, accessibility, and connectivity, especially for lower income travelers, people with disabilities, and historically underserved communities who experience transportation barriers.

▶ Physical design:

- Integrate equity, area history, and culture into the physical design elements of the program including bridge aesthetics, artwork, amenities, and impacts to adjacent land uses.

▶ Community benefits:

- Find opportunities for and implement local community improvements in addition to required mitigations.

▶ Workforce equity and economic opportunity:

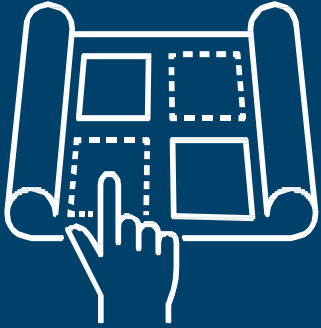
- Ensure that economic opportunities generated by the program benefit minority and women owned firms, BIPOC workers, workers with disabilities, and young people.

▶ Decision-making processes:

- Prioritize access, influence, and decision-making power for Equity Priority Communities throughout the program in establishing objectives, design, implementation, and evaluation of success.

▶ Avoid further harm:

- Actively seek out options with a harm-reduction priority rather than simply mitigate disproportionate impacts on historically impacted and underserved communities and populations.



Focus Area Planning

Vancouver Waterfront Focus Area

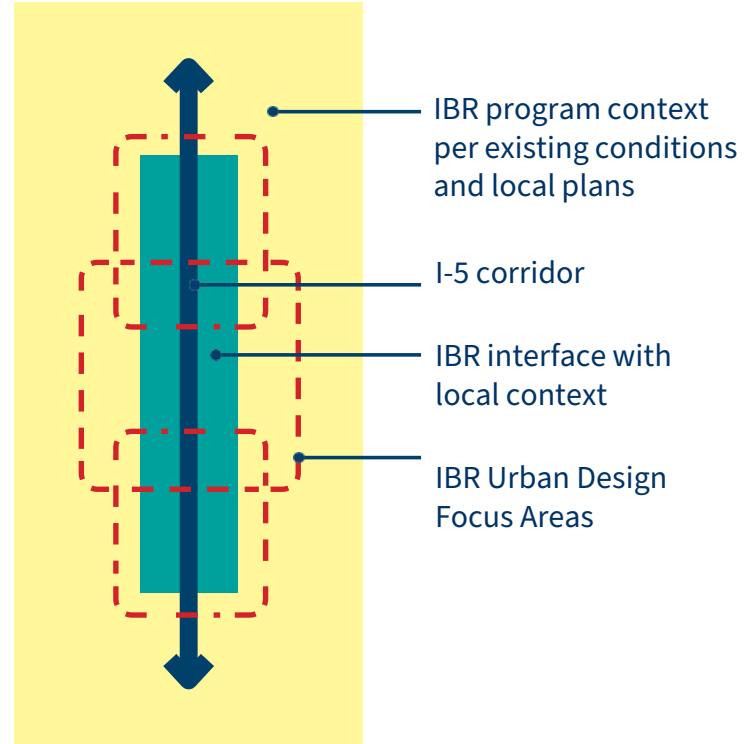
URBAN DESIGN FOCUS AREAS



URBAN DESIGN FOCUS AREAS

To have a holistic conversation about the wide range of interrelated urban design issues, we will discuss urban elements both within and outside of the IBR program corridor. Not all topics, concepts, or spaces discussed during our urban design discussions will be part of the IBR program.

We will also be exploring a wide range of potential opportunities, many of which will be dependent on greater level of detail that we will work towards as we advance the coordinated design. The IBR program must reserve space needed for stormwater and other maintenance and operations functions before determining which specific locations will be available for other urban design programming.



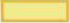
VANCOUVER WATERFRONT

The following ongoing analysis will guide the next stage of design at Vancouver Waterfront:

STATION LOCATION:

-  A) Center Platform or
-  B) Side Platform

STATION ACCESS INCLUDES:

-  What combination of plazas, sidewalks, ramps, stairs, and elevators?


PRIMARY EAST/WEST PED/BIKE CONNECTIONS AT:

- 
 - Phil Arnold Way
 - Between SR-14 and BSNF
 - W Columbia Way

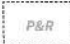
SHARED USE PATH CONNECTION AT:

- A) Under I-5 or
- B) East of I-5

BUS TRANSFER AT:

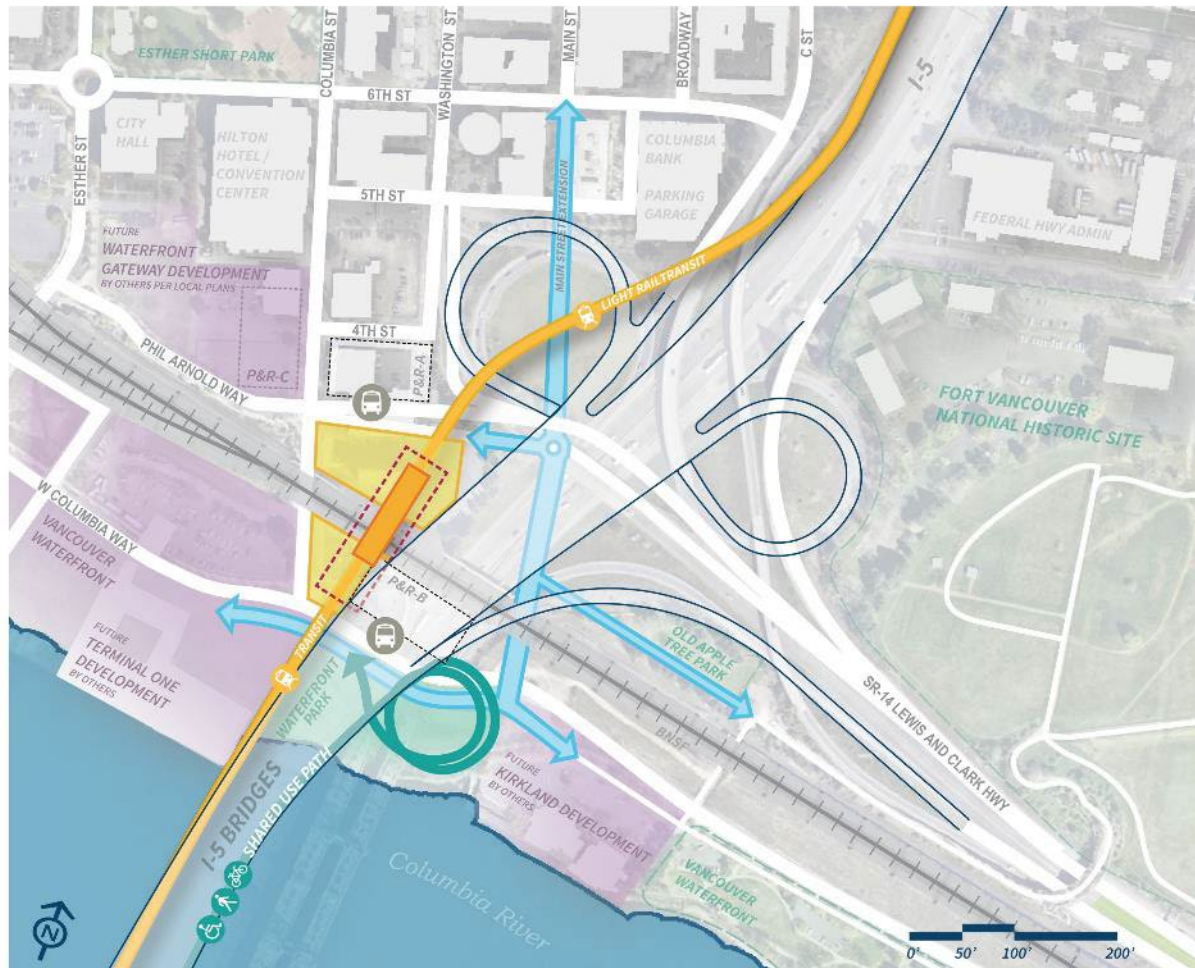
-  A) On or adjacent to street or
- B) In park & ride structure

PARK AND RIDE LOCATION AT:

-  P&R-A) Phil Arnold Way & Columbia or
- P&R-B) Under I5 along Columbia Way or
- P&R-C) Integrated with Gateway Development

Context:

-  Future Development by others
-  Future Open Space by others
-  Existing Parks & Open Space





Station Design Concepts

Vancouver Waterfront Station

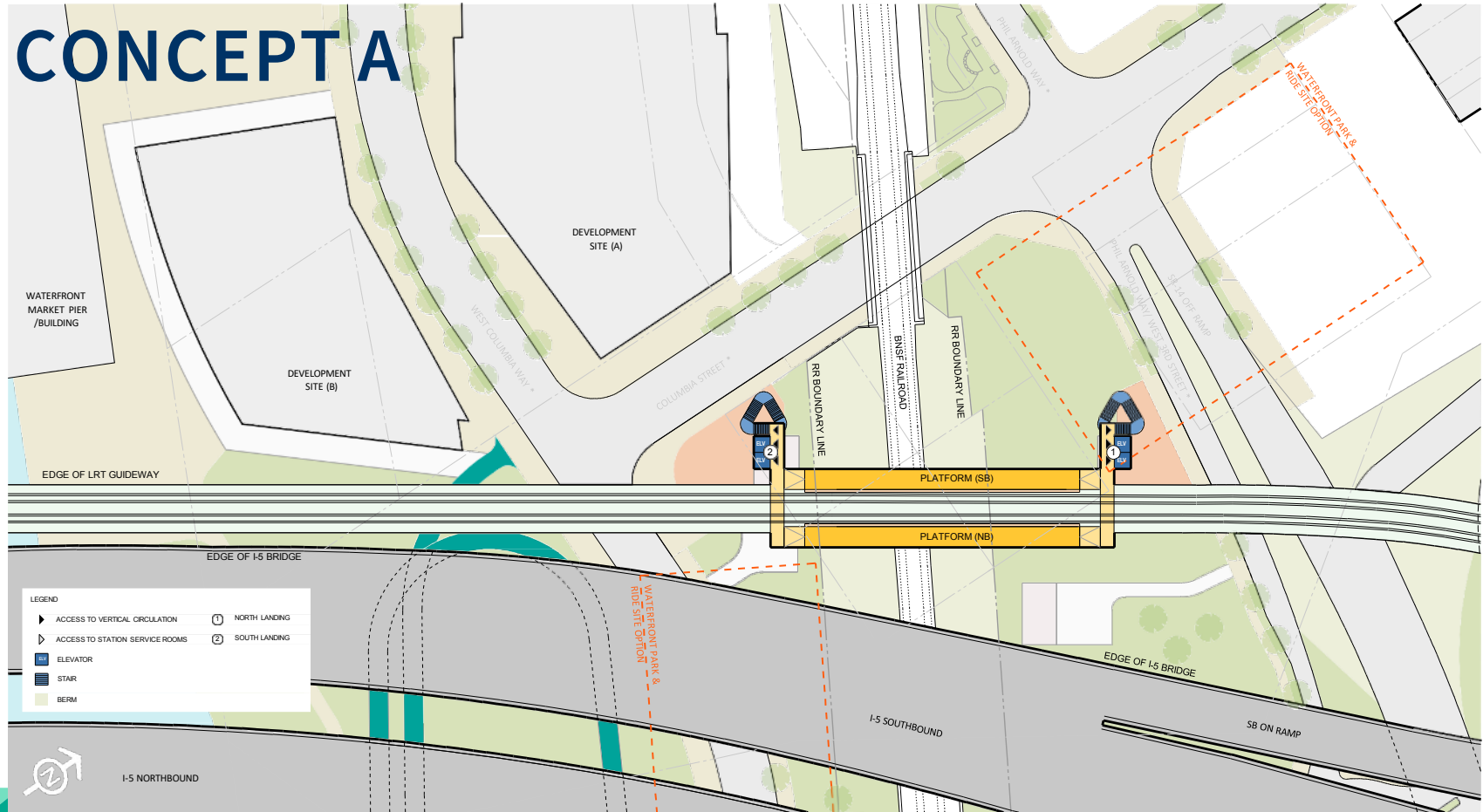
STATION CONCEPT COMPARISON

Station Option #	Platform		# of Entrances	# of Stairs	# of Elevators	Potential Station Access Location			Track Crossings	Plaza / Access Design Flexibility	Need for BNSF Coordination during:	
	Side or Center	Station Location				South of Columbia Way	Between Columbia & BNSF	North of BNSF			Construction	Maintenance
A	Side	Straddling BNSF	2	2	2-4	X	✓	✓	2	More	More	More
B	Center		2	2	2-4	X	✓	✓	0-2	Less	More	More
C	Side	South of BNSF	1	2	2	X	✓	X	2	More	Less	Less

Station Design Requirements/Constraints

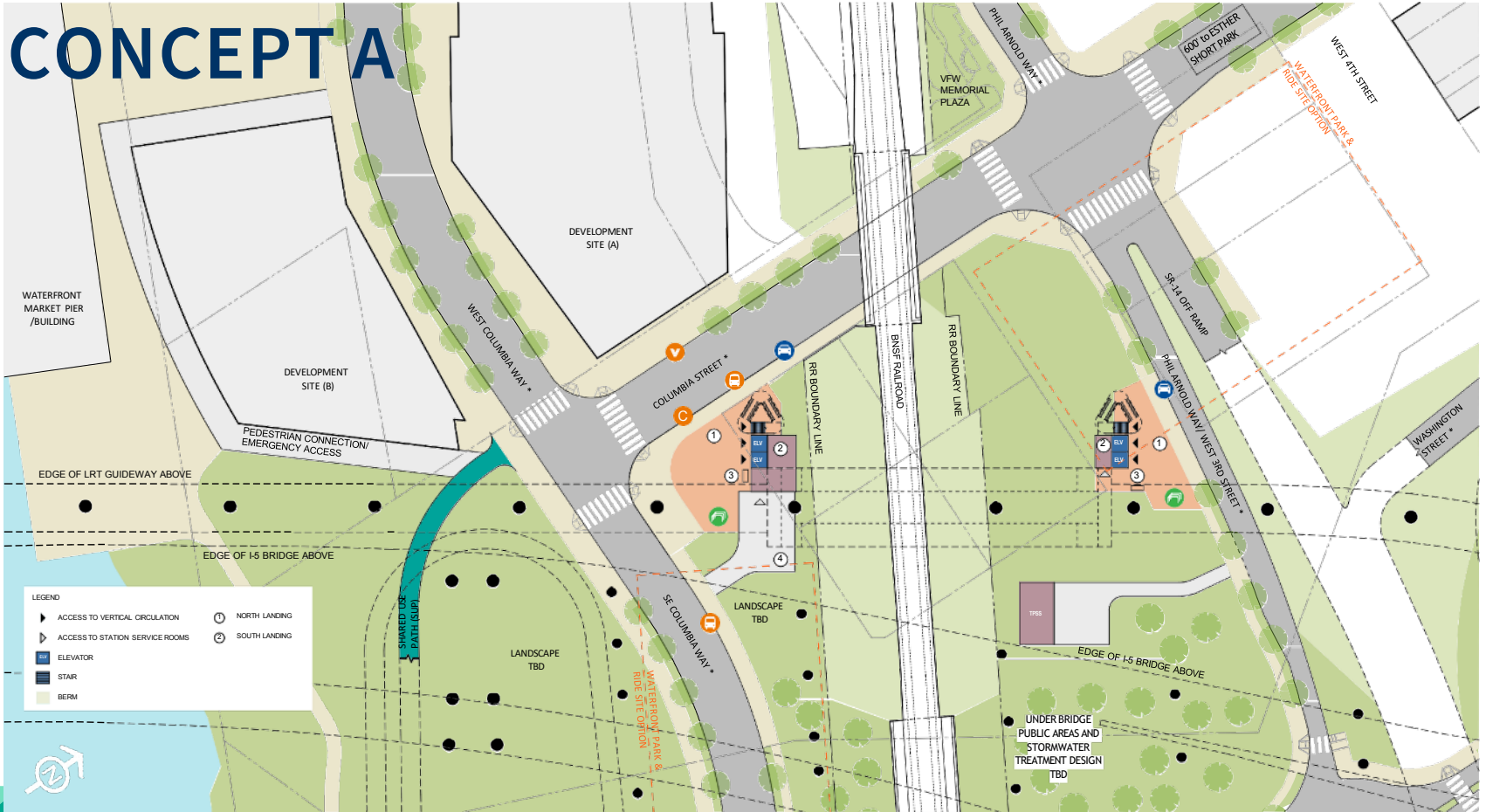
LRT System	Platform length (200') and height (75')
	Platform location constrained by trackway/guideway geometry
	Ground-level context: 2 entrances w/ entry plaza, bus integration, bike parking, PUDO
East-West Platform Location	West edge of bridge configuration option and Block B tightly constrain East-West location options
	Single Level Bridge is more constrained than Double Deck Bridge for plaza / access design
	Design for 10' offset between structures for constructability and maintenance
BNSF	Platforms above tracks assumed to be allowable
	Needed BNSF coordination considered equal for vertical circulation construction and maintenance
	Needed BNSF coordination differences are specific to functional platform area (paving, shelters, etc)
	Exposure to BNSF fumes considered equal between location options (if an issue, similar mitigation)
Street Level Context	Columbia Street alignment will not change significantly , except at intersection
	Columbia Way alignment flexible east of intersection only; intersection configuration TBD
	Center platforms constrain plaza design and station access design more than side platforms
	Pump Station assumed to be relocated (side platforms offer more flexibility for possible retention)

CONCEPT A



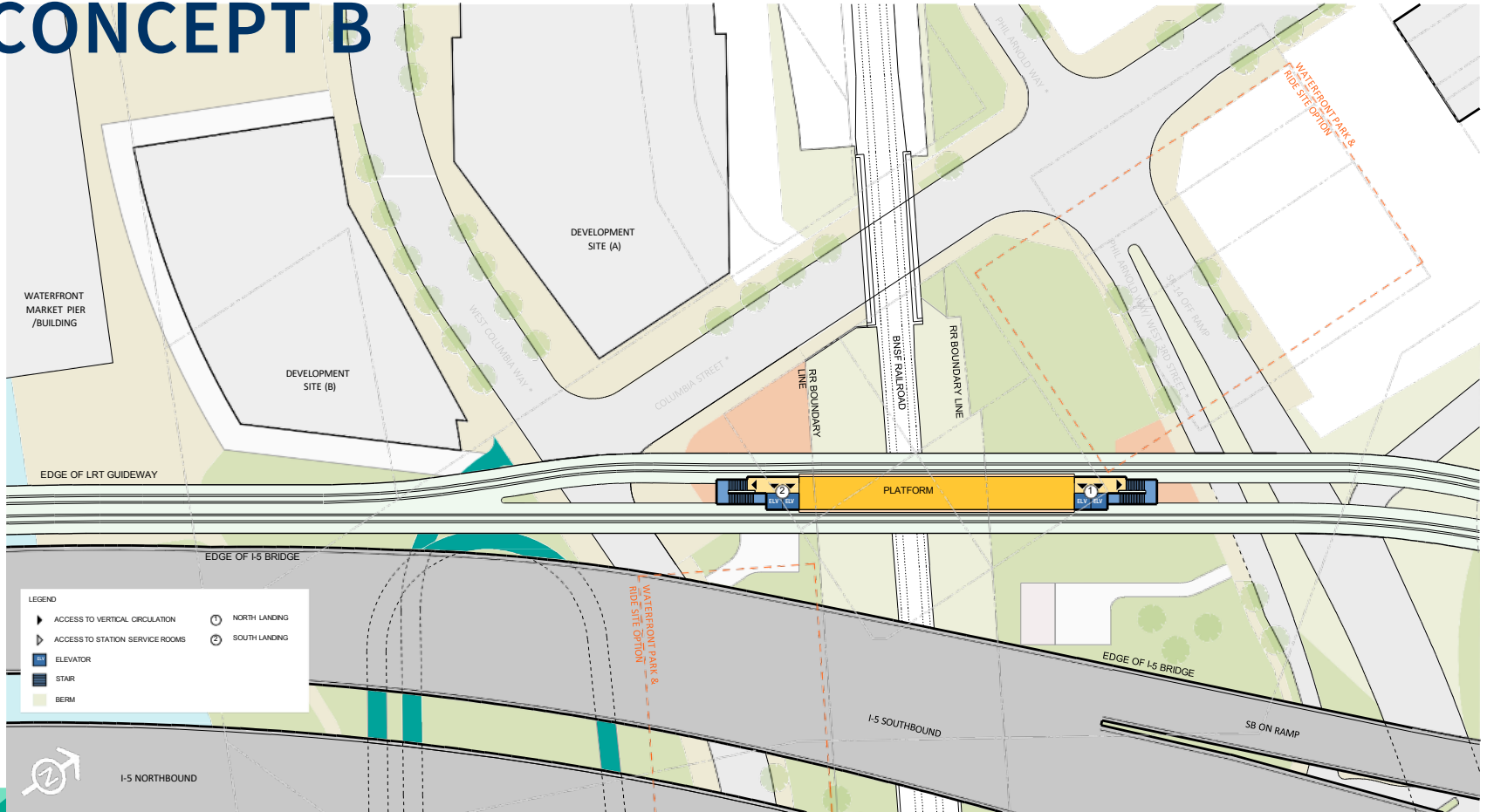
LEGEND	
	ACCESS TO VERTICAL CIRCULATION
	ACCESS TO STATION SERVICE ROOMS
	ELEVATOR
	STAR
	BERM
	1 NORTH LANDING
	2 SOUTH LANDING

CONCEPT A



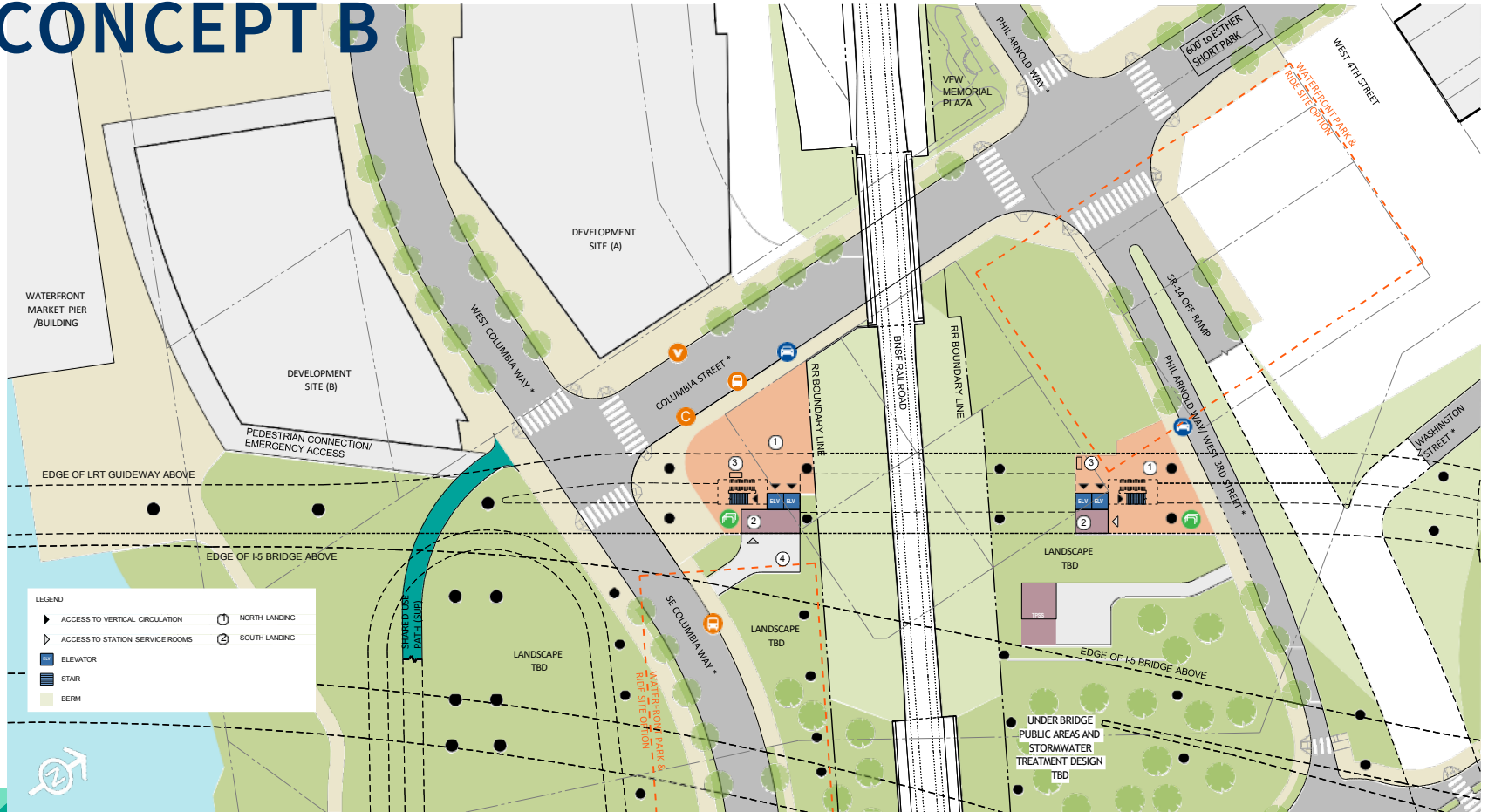
LEGEND	
	ACCESS TO VERTICAL CIRCULATION
	ACCESS TO STATION SERVICE ROOMS
	ELEVATOR
	STAIR
	BERM
	NORTH LANDING
	SOUTH LANDING

CONCEPT B



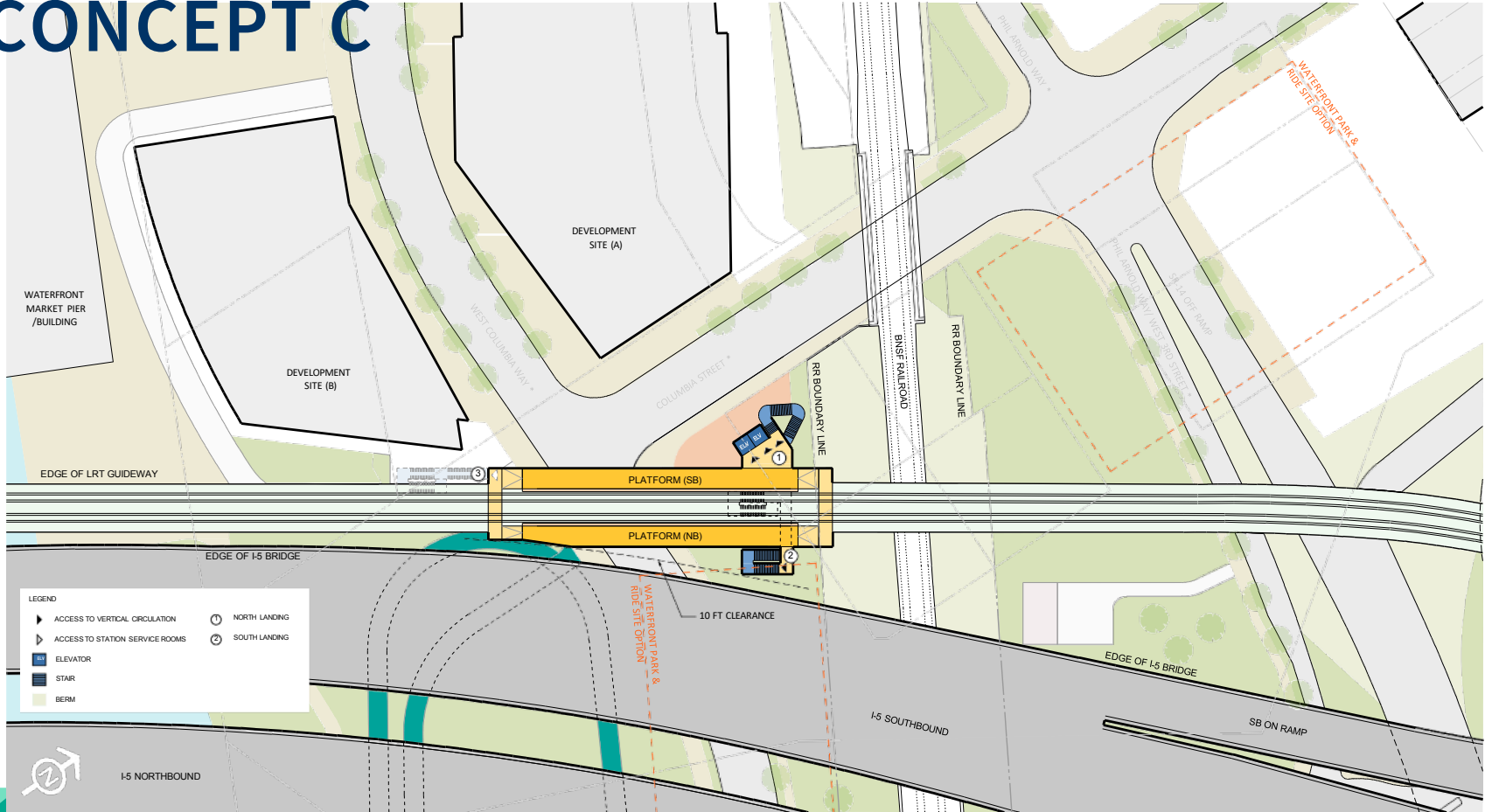
LEGEND	
	ACCESS TO VERTICAL CIRCULATION
	ACCESS TO STATION SERVICE ROOMS
	ELEVATOR
	STAR
	BERM
	1 NORTH LANDING
	2 SOUTH LANDING

CONCEPT B

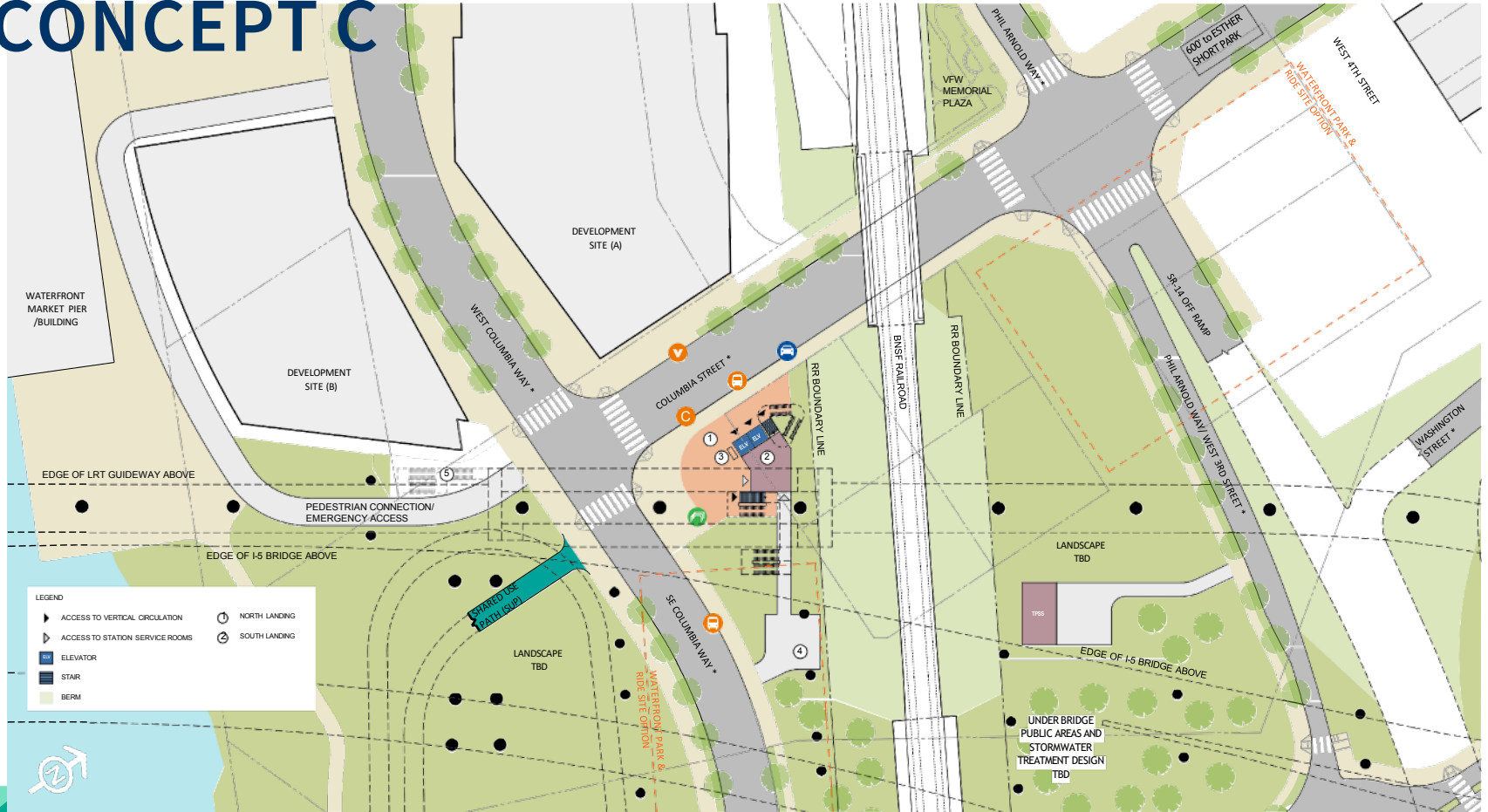


LEGEND	
	ACCESS TO VERTICAL CIRCULATION
	NORTH LANDING
	SOUTH LANDING
	ELEVATOR
	STAIR
	BERM

CONCEPT C



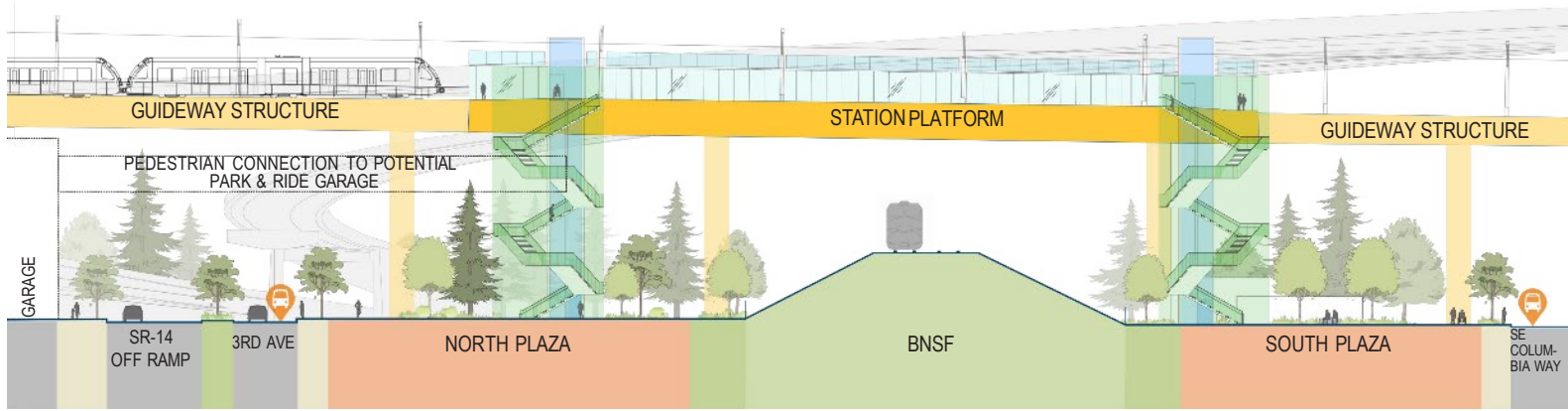
CONCEPT C



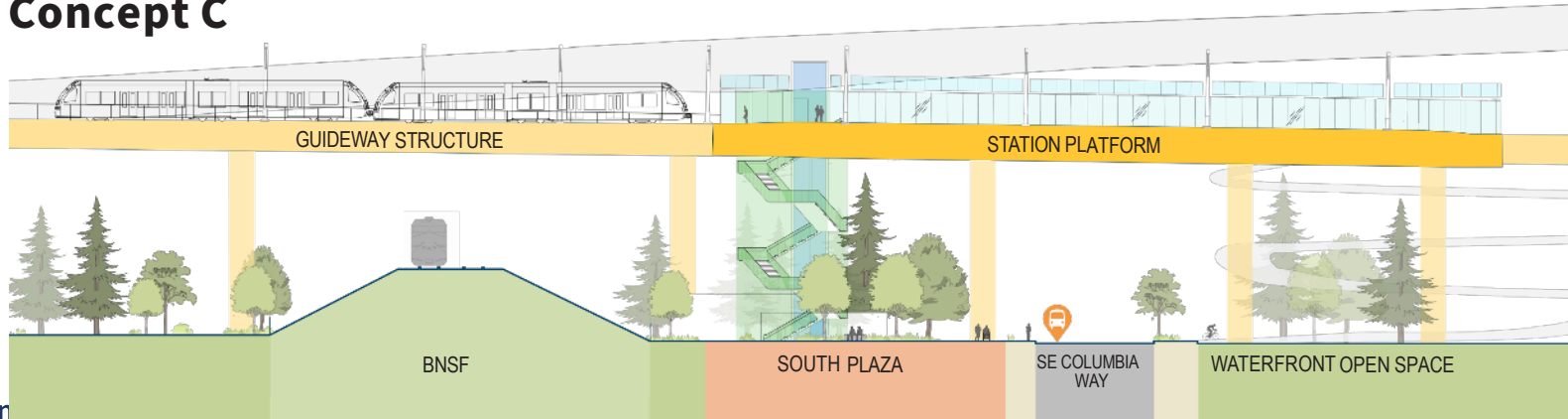
LEGEND

- ACCESS TO VERTICAL CIRCULATION
- ACCESS TO STATION SERVICE ROOMS
- ELEVATOR
- STAIR
- BERM
- 1 NORTH LANDING
- 2 SOUTH LANDING

Concepts A & B

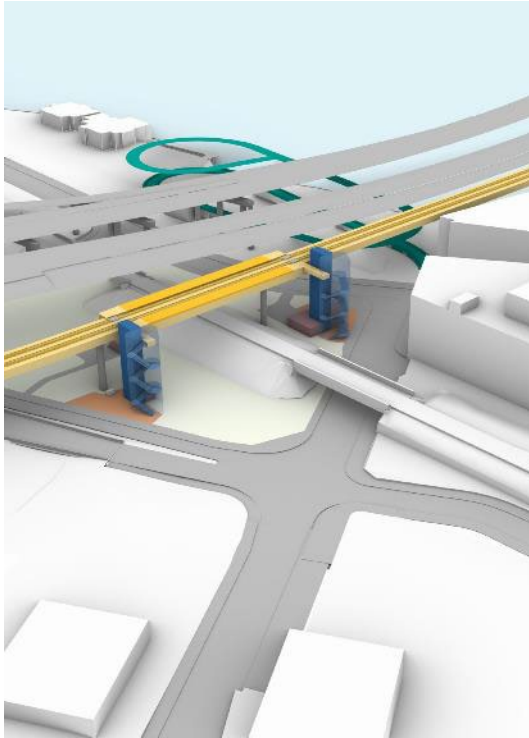


Concept C

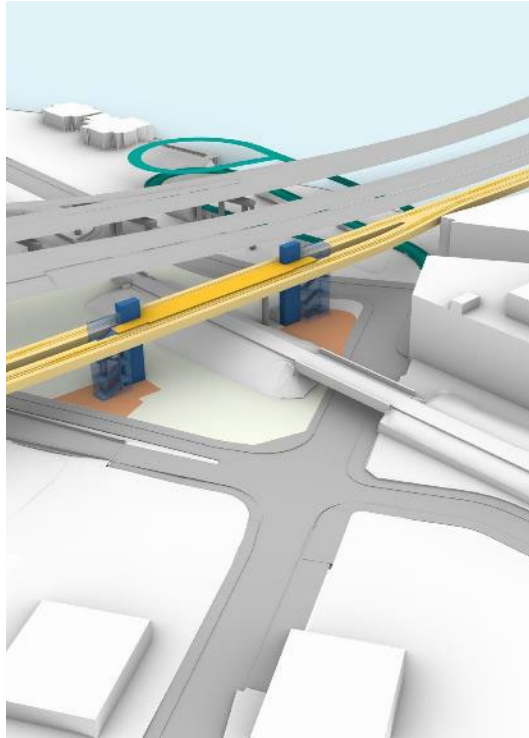


3D VIEWS

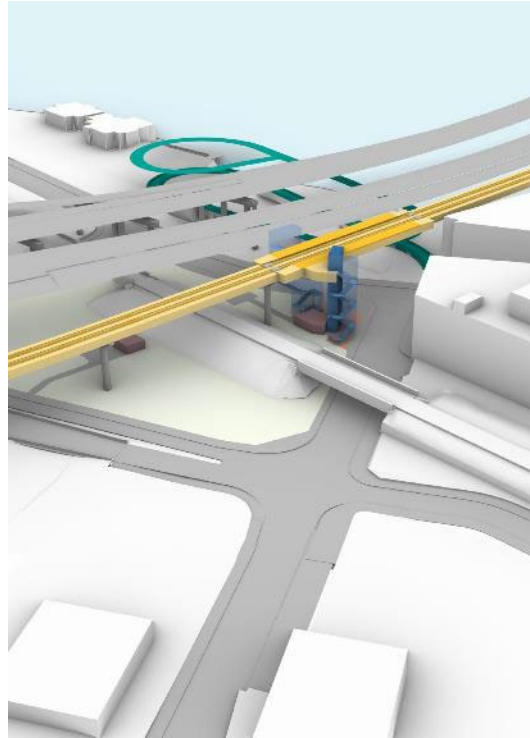
Concept A



Concept B



Concept C



Discussion

- ▶ What questions do you have?
- ▶ What design elements from each concept align with the IBR Equity Objectives?
- ▶ Are there changes to each station concept you would like to see considered?
- ▶ What would you like to hear from other IBR advisory groups (eg CAG, CBAG)?



Questions?

For more information contact:
Ben Deines, Urban Design Team
Ben.Deines@interstatebridge.org

Public Comment

Comment Instructions

- ▶ Through Zoom:
 - ▶ Please use the link located in the meeting description on the YouTube meeting page or on the IBR EAG meeting webpage.
 - ▶ Commenters will be allowed to turn on their webcams, but will not be allowed to share their screens and will be removed from the room once the public comment period concludes.
- ▶ By phone:
 - ▶ Dial 253-215-8782
 - ▶ Meeting ID: 986 0940 5983
 - ▶ Passcode: 701376
 - ▶ Dial *9 to raise your hand
 - ▶ Dial *6 to unmute yourself
- ▶ The facilitator will call on participants to provide comment
- ▶ Please provide your name and affiliation.
- ▶ Commenters will be given 2 minutes to speak.



or



Comment Instructions

To submit comment after the meeting:



- ▶ Fill out the comment form on the program website or email your comments to info@interstatebridge.org with “**EAG Public Comment**” in the subject line.



- ▶ Call **888-503-6735** and state “EAG Public Comment” in your message.
- ▶ All written comments must be received prior to 48 hours in advance of each upcoming meeting in order to be distributed to advisory group members. Comments received after that point will be distributed to members in advance of their next meeting.

Wrap up

- Meeting evaluation
- Next meeting: March 18, 5:30 – 7:30pm